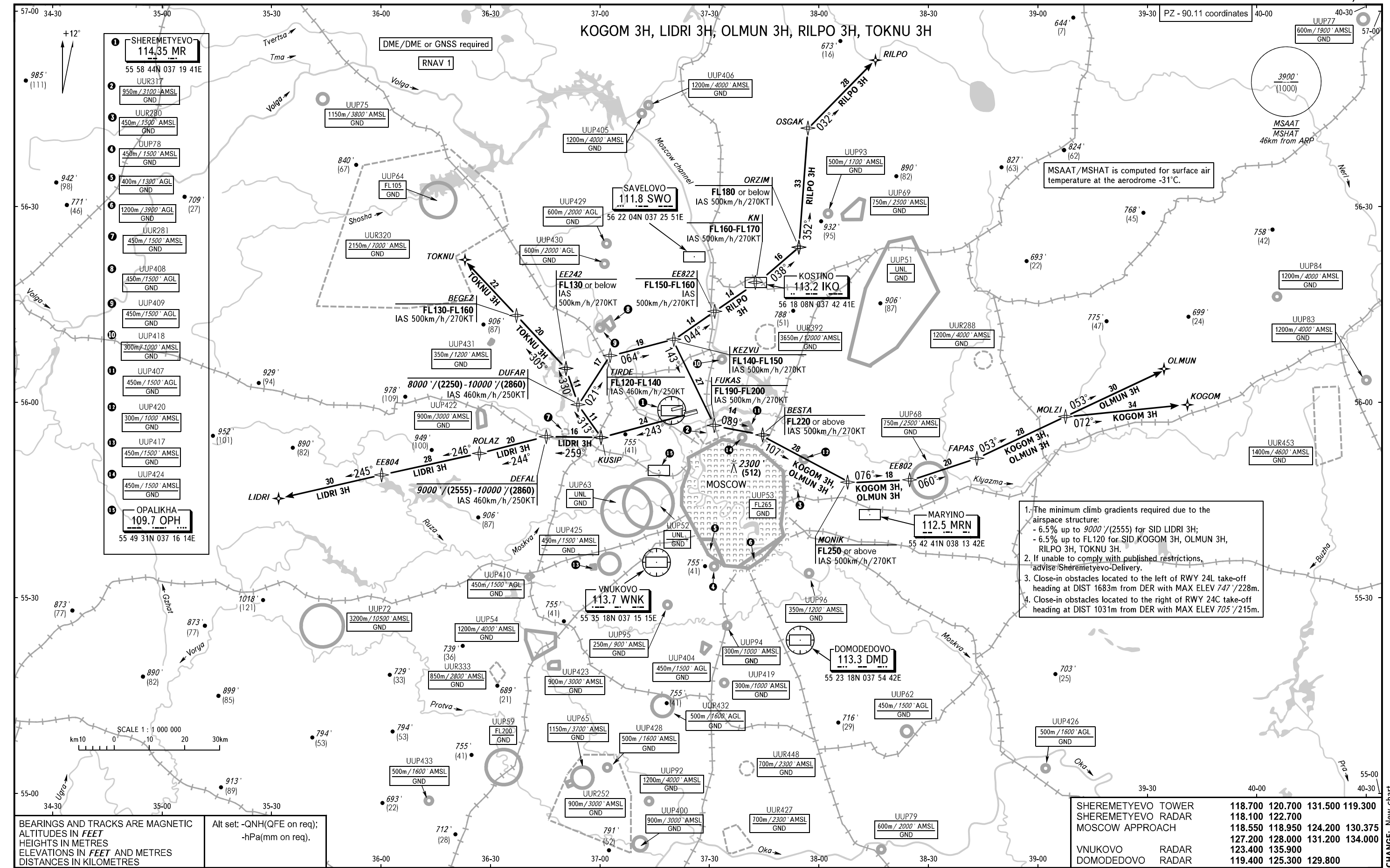


STANDARD DEPARTURE CHART  
INSTRUMENT (SID) - ICAO

TRANSITION ALT: 10000'  
TRANSITION HGT: (2860)

MOSCOW, RUSSIA  
SHEREMETYEVO  
RNAV RWY 24C, 24L



- 1. SHEREMETYEVO 114.35 MR  
55 58 44N 037 19 41E
- 2. UUR317  
950m/3100' AMSL  
GND
- 3. UUR280  
450m/1500' AMSL  
GND
- 4. UUP78  
450m/1500' AMSL  
GND
- 5. UUR281  
450m/1500' AMSL  
GND
- 6. UUP64  
FL105  
GND
- 7. UUR281  
450m/1500' AMSL  
GND
- 8. UUP408  
450m/1500' AGL  
GND
- 9. UUP409  
450m/1500' AGL  
GND
- 10. UUP418  
300m/1000' AMSL  
GND
- 11. UUP407  
450m/1500' AGL  
GND
- 12. UUP420  
300m/1000' AMSL  
GND
- 13. UUP417  
450m/1500' AMSL  
GND
- 14. UUP424  
450m/1500' AMSL  
GND
- 15. OPALIKHA 109.7 OPH  
55 49 31N 037 16 14E

1. The minimum climb gradients required due to the airspace structure:
  - 6.5% up to 9000'/(2555) for SID LIDRI 3H;
  - 6.5% up to FL120 for SID KOGOM 3H, OLMUN 3H, RILPO 3H, TOKNU 3H.
2. If unable to comply with published restrictions, advise Sheremetyevo-Delivery.
3. Close-in obstacles located to the left of RWY 24L take-off heading at DIST 1683m from DER with MAX ELEV 747' /228m.
4. Close-in obstacles located to the right of RWY 24C take-off heading at DIST 1031m from DER with MAX ELEV 705' /215m.

SHEREMETYEVO TOWER	118.700	120.700	131.500	119.300
SHEREMETYEVO RADAR	118.100	122.700		
MOSCOW APPROACH	127.200	118.950	124.200	130.375
VNUKOVO RADAR	123.400	135.900		
DOMODEDOVO RADAR	119.400	125.300	129.800	

CHANGE: New chart