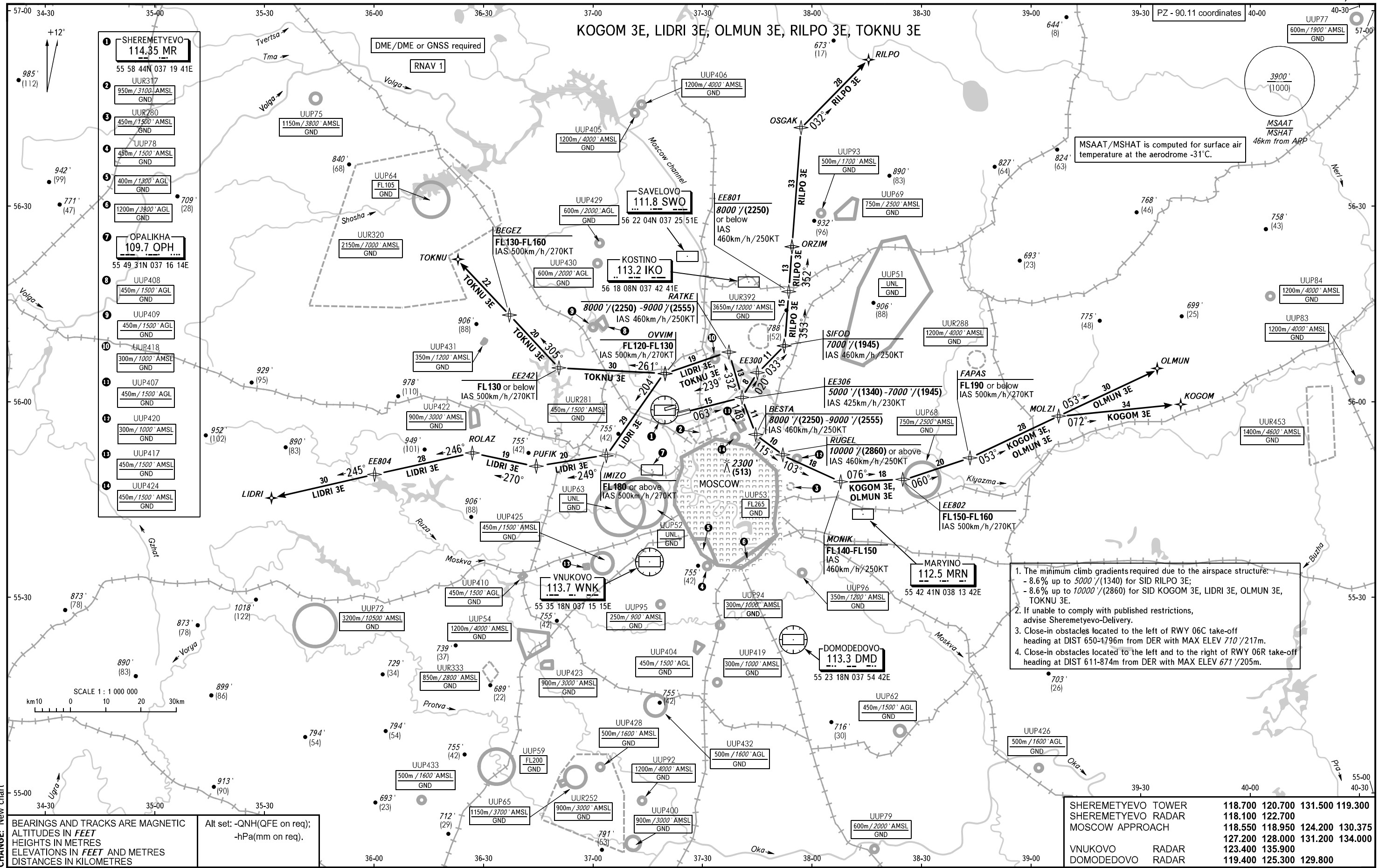


STANDARD DEPARTURE CHART
INSTRUMENT (SID) - ICAO

TRANSITION ALT: **10000'**
TRANSITION HGT: **(2860)**

MOSCOW, RUSSIA
SHEREMETYEVO
RNAV RWY 06C, 06R



- The minimum climb gradients required due to the airspace structure:
 - 8.6% up to 5000'/(1340) for SID RILPO 3E;
 - 8.6% up to 10000'/(2860) for SID KOGOM 3E, LIDRI 3E, OLMUN 3E, TOKNU 3E.
- If unable to comply with published restrictions, advise Sheremetyevo-Delivery.
- Close-in obstacles located to the left of RWY 06C take-off heading at DIST 650-1796m from DER with MAX ELEV 710'/217m.
- Close-in obstacles located to the left and to the right of RWY 06R take-off heading at DIST 611-874m from DER with MAX ELEV 671'/205m.

SHEREMETYEVO TOWER	118.700	120.700	131.500	119.300
SHEREMETYEVO RADAR	118.100	122.700		
MOSCOW APPROACH	118.550	118.950	124.200	130.375
	127.200	128.000	131.200	134.000
VNUKOVO RADAR	123.400	135.900		
DOMODEDOVO RADAR	119.400	125.300	129.800	

BEARINGS AND TRACKS ARE MAGNETIC
ALTITUDES IN FEET
HEIGHTS IN METRES
ELEVATIONS IN FEET AND METRES
DISTANCES IN KILOMETRES

Alt set: -QNH(QFE on req);
-hPa(mm on req).