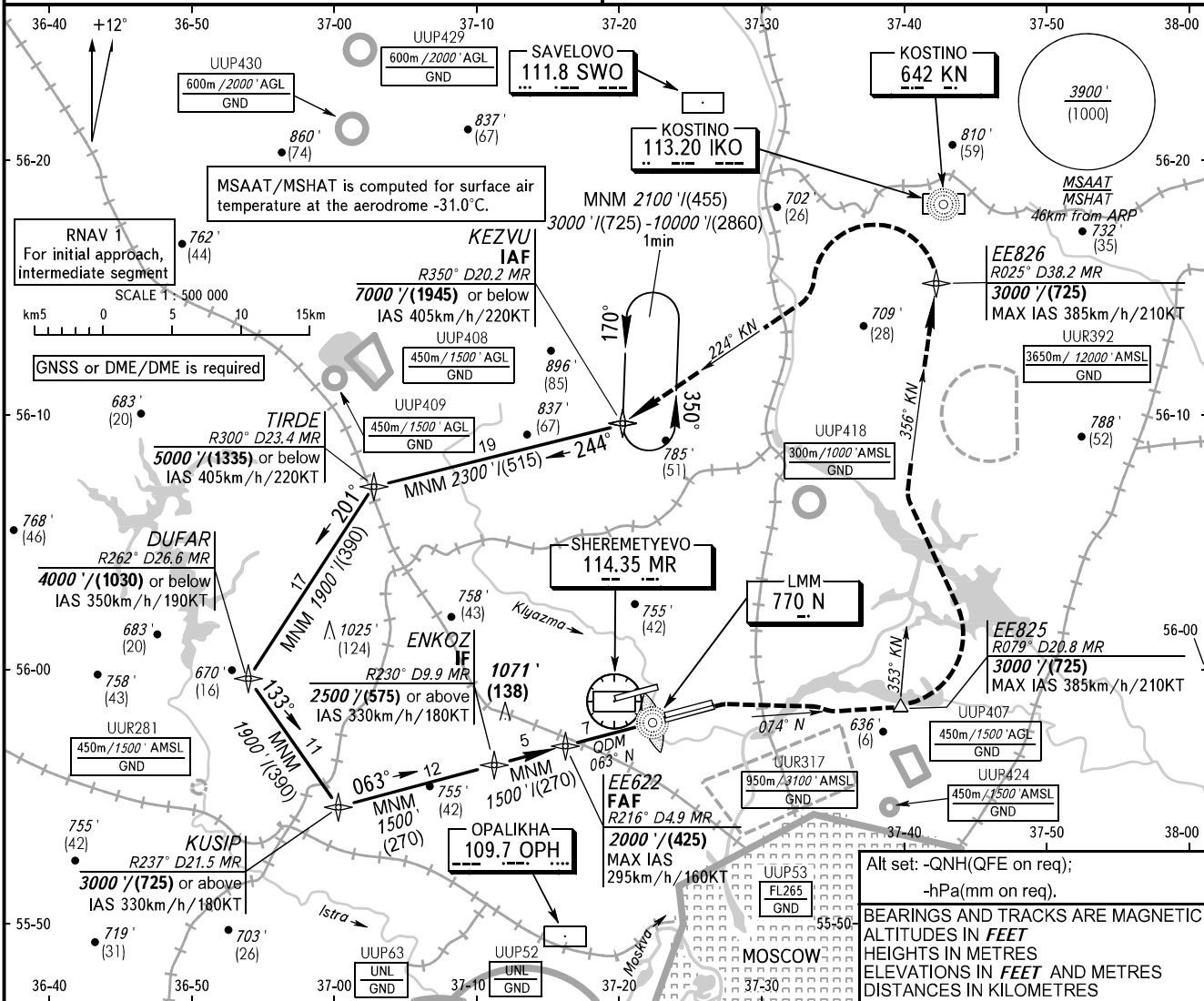


**INSTRUMENT  
APPROACH  
CHART - ICAO**

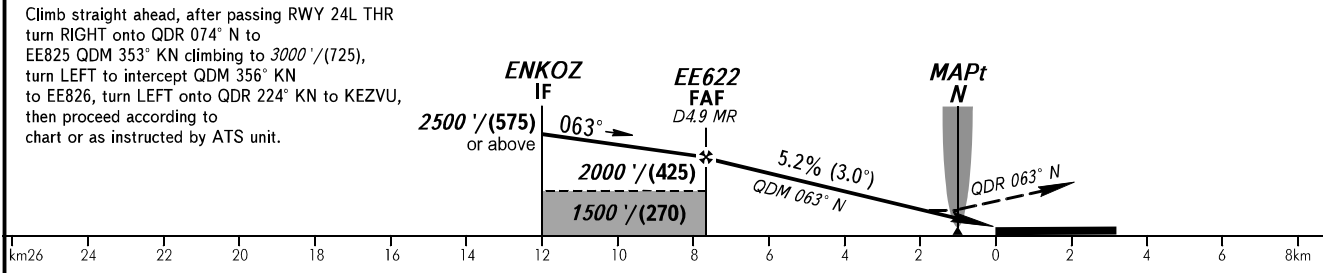
**MOSCOW, RUSSIA  
SHEREMETYEVO  
NDB RWY 06R**

SHEREMETYEVO RADAR **118.100 120.675 122.700 126.600 135.175**  
SHEREMETYEVO TOWER **118.700 120.700 131.500**

TRANSITION LEVEL: By ATC ①      TRANSITION ALT: **10000'**      AD ELEV: **630' / 192m**  
TRANSITION HGT: **(2860)**      THR ELEV: **619' / 188.5m**



**MISSED APPROACH**  
Climb straight ahead, after passing RWY 24L THR turn RIGHT onto QDR 074° N to EE825 QDM 353° KN climbing to 3000'/(725), turn LEFT to intercept QDM 356° KN to EE826, turn LEFT onto QDR 224° KN to KEZVU, then proceed according to chart or as instructed by ATS unit.



OCA(H)	A	B	C	D								
Straight-in	1170' (550') (170)	1170' (550') (170)	1170' (550') (170)	1170' (550') (170)								
Approach												
GROUND SPEED	km/h	150	180	210	240	270	300	330	360	390	420	450
RATE OF DESCENT	m/s	2.2	2.6	3.1	3.5	3.9	4.3	4.8	5.2	5.6	6.1	6.5
	ft/min		427	512	597	683	768	853	939	1024	1109	1280

① TRANSITION LEVEL:  
- FL110 when QNH is 1013 hPa (760mm mercury column) or above;  
- FL120 when QNH is 977 hPa (733mm mercury column) or above, but less than 1013 hPa (760mm mercury column);  
- FL130 when QNH is less than 977 hPa (733mm mercury column).

CHANGE: New chart