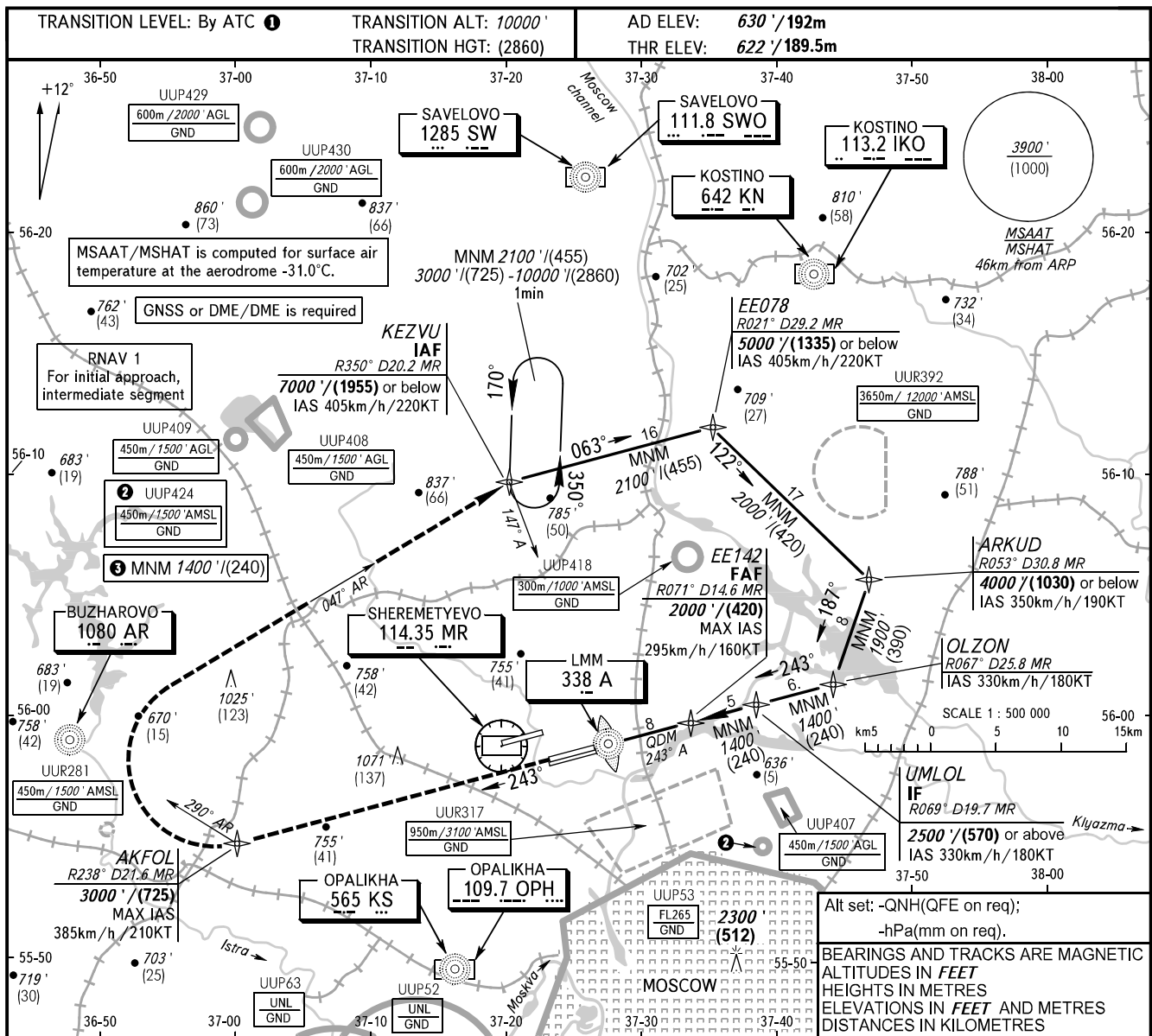


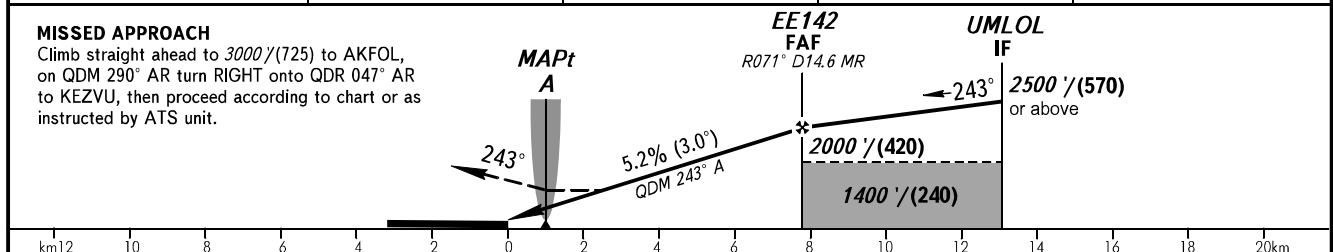
**INSTRUMENT
APPROACH
CHART - ICAO**

SHEREMETYEVO RADAR 118.100 120.675 122.700 126.600 135.175
SHEREMETYEVO TOWER 118.700 120.700 131.500

**MOSCOW, RUSSIA
SHEREMETYEVO
NDB RWY 24C**



DME MR	8.0	10.0	12.0	14.0
ALTITUDE/HEIGHT	840'/(70)	1180'/(145)	1520'/(275)	1860'/(380)



OCA(H)		A	B	C	D	<p>① TRANSITION LEVEL:</p> <ul style="list-style-type: none"> - FL110 when QNH is 1013 hPa (760mm mercury column) or above; - FL120 when QNH is 977 hPa (733mm mercury column) or above, but less than 1013 hPa (760mm mercury column); - FL130 when QNH is less than 977 hPa (733mm mercury column). 						
Straight-in	Approach	1140' (520')	1140' (520')	1140' (520')	1140' (520')							
		(160)	(160)	(160)	(160)							
GROUND SPEED	km/h	150	180	210	240		270	300	330	360	390	420
RATE OF DESCENT	m/s	2.2	2.6	3.1	3.5	3.9	4.3	4.8	5.2	5.6	6.1	6.5
	ft/min	427	512	597	683	768	853	939	1024	1109	1195	1280