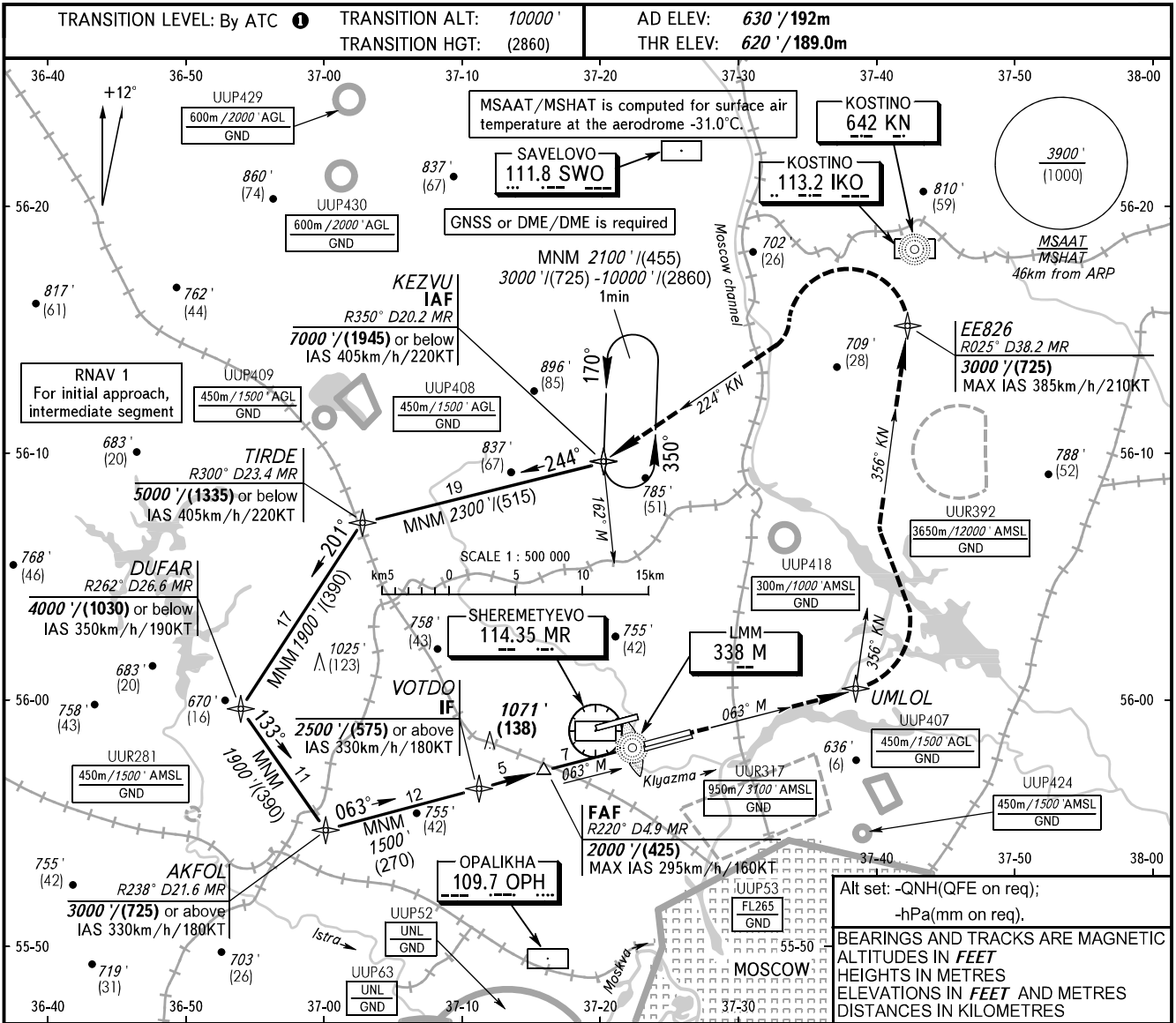


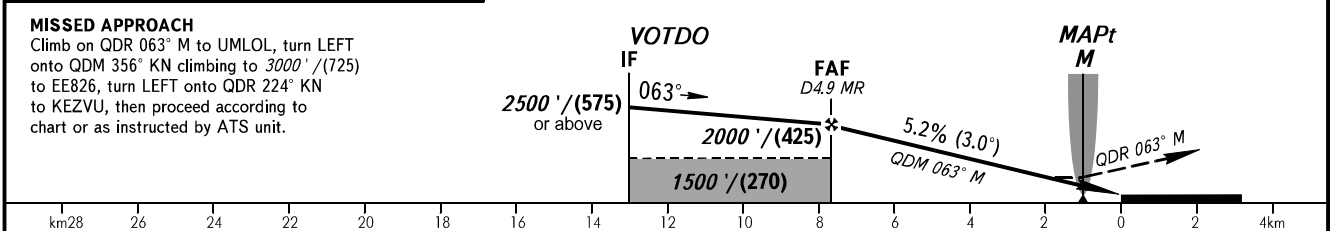
**INSTRUMENT  
APPROACH  
CHART - ICAO**

SHEREMETYEVO RADAR 118.100 120.675 122.700 126.600 135.175  
SHEREMETYEVO TOWER 118.700 120.700 131.500

**MOSCOW, RUSSIA  
SHEREMETYEVO  
NDB RWY 06C**



DME MR	4.9
ALTITUDE/HEIGHT	2000'/(425)



OCA(H)	A	B	C	D
Straight-in	1170' (550') (170)	1170' (550') (170)	1170' (550') (170)	1170' (550') (170)
Approach				

**① TRANSITION LEVEL:**

- FL110 when QNH is 1013 hPa (760mm mercury column) or above;
- FL120 when QNH is 977 hPa (733mm mercury column) or above, but less than 1013 hPa (760mm mercury column);
- FL130 when QNH is less than 977 hPa (733mm mercury column).

GROUND SPEED	km/h	150	180	210	240	270	300	330	360	390	420	450
RATE OF DESCENT	m/s	2.2	2.6	3.1	3.5	3.9	4.3	4.8	5.2	5.6	6.1	6.5
	ft/min	427	512	597	683	768	853	939	1024	1109	1195	1280

CHANGE: New chart