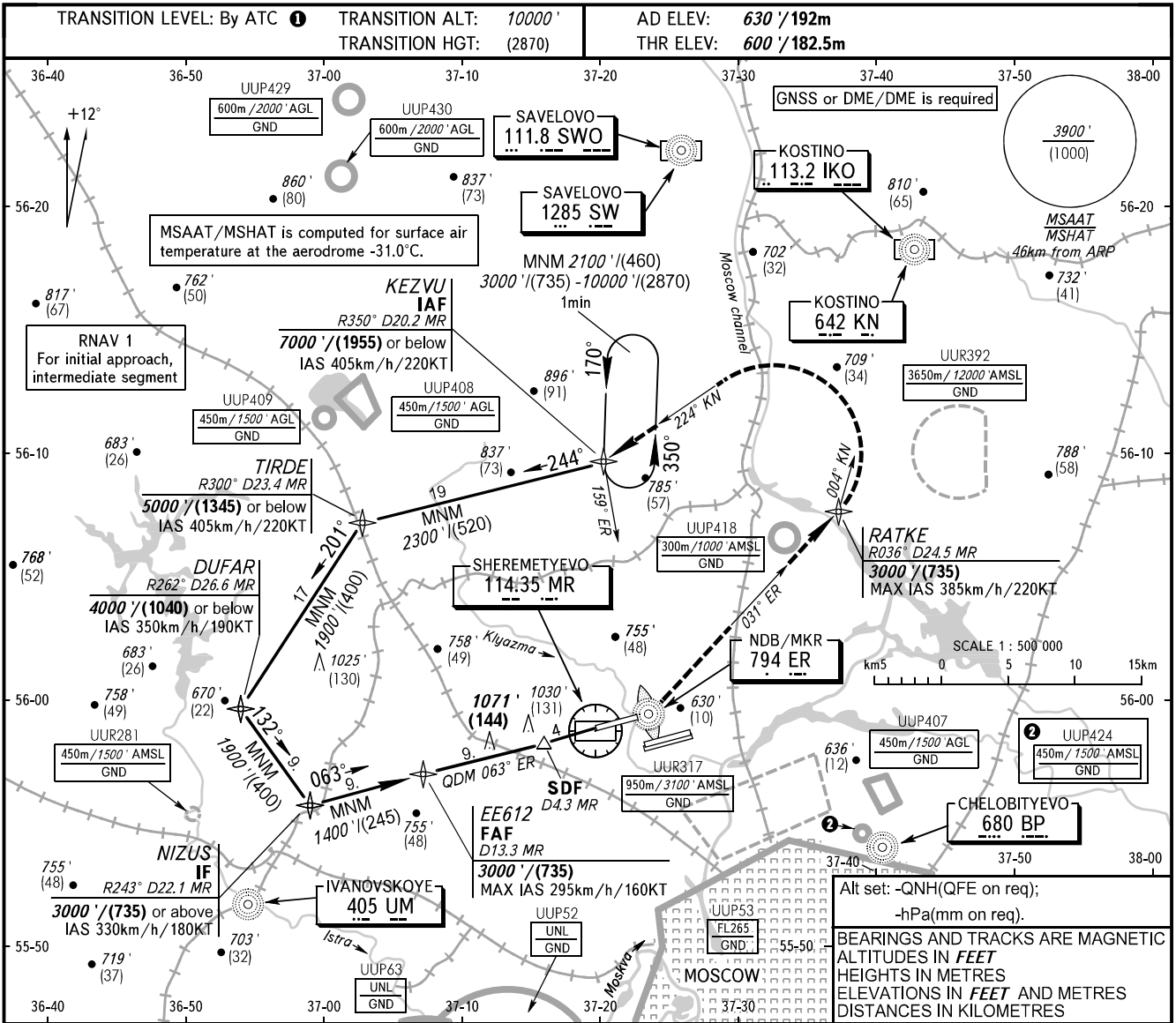


**INSTRUMENT
APPROACH
CHART - ICAO**

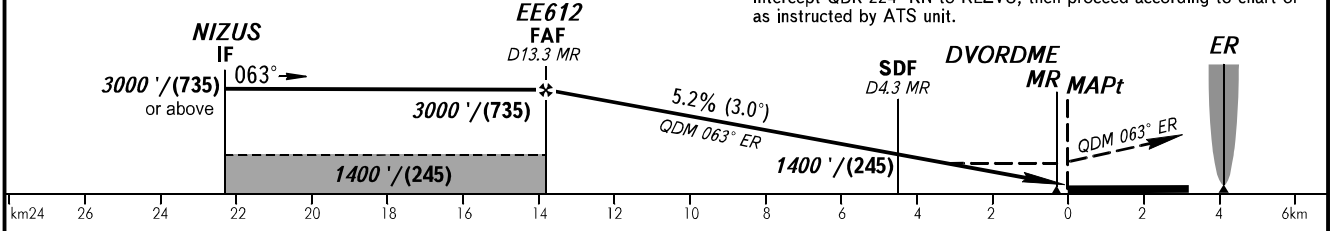
SHEREMETYEVO RADAR 118.100 120.675 122.700 126.600 135.175
SHEREMETYEVO TOWER 118.700 120.700 131.500

**MOSCOW, RUSSIA
SHEREMETYEVO
NDB RWY 06L**



DME MR	12.0	10.0	8.0	6.0	4.0	2.0
ALTITUDE HEIGHT	2710'/(645)	2370'/(540)	2030'/(435)	1690'/(335)	1350'/(230)	1010'/(125)

MISSED APPROACH
Climb straight ahead to NDB/MKR ER, turn LEFT onto QDR 031° ER to RATKE climbing to 3000'/(735), on QDM 004° KN turn LEFT to intercept QDR 224° KN to KEZVU, then proceed according to chart or as instructed by ATS unit.



OCA(H)		A	B	C	D
Straight-in	With SDF	1130' (530') (160)	1130' (530') (160)	1130' (530') (160)	1130' (530') (160)
	Approach	1320' (720') (220)	1320' (720') (220)	1320' (720') (220)	1320' (720') (220)

1 TRANSITION LEVEL:
- FL110 when QNH is 1013 hPa (760mm mercury column) or above;- FL120 when QNH is 977 hPa (733mm mercury column) or above, but less than 1013 hPa (760mm mercury column);
- FL130 when QNH is less than 977 hPa (733mm mercury column).

GROUND SPEED	km/h	150	180	210	240	270	300	330	360	390	420	450
FAF-MAPt 13780m	min:sec	5:31	4:36	3:56	3:27	3:04	2:45	2:30	2:18	2:07	1:58	1:50
RATE OF DESCENT	m/s	2.2	2.6	3.0	3.5	3.9	4.3	4.8	5.2	5.6	6.1	6.5
	ft/min	427	512	597	683	768	853	939	1024	1109	1195	1280

CHANGE: New chart