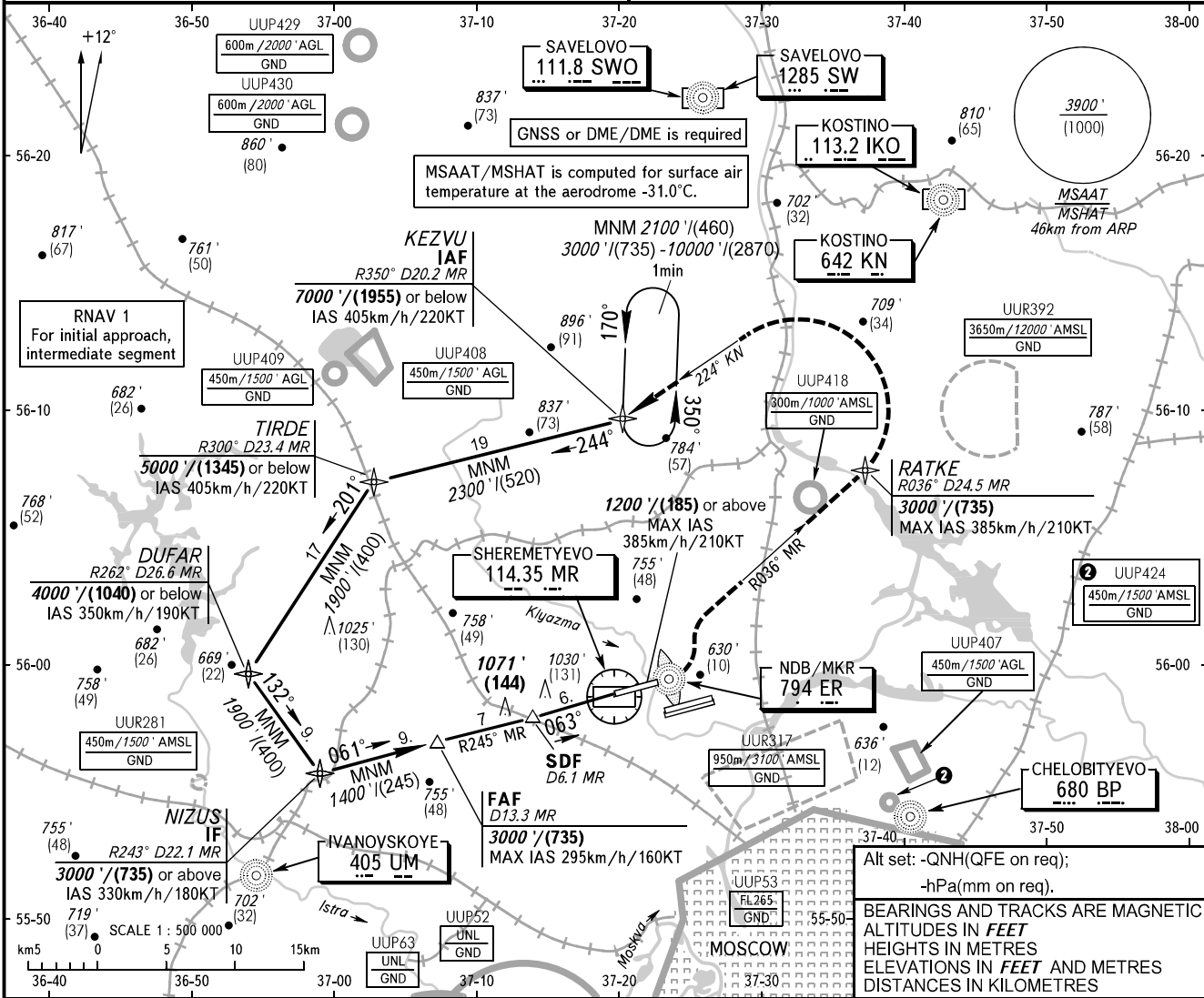


**INSTRUMENT
APPROACH
CHART - ICAO**

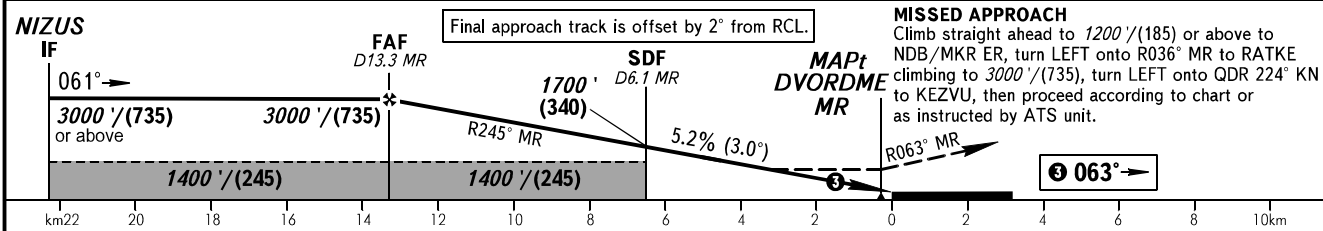
**MOSCOW, RUSSIA
SHEREMETYEVO
DVOR RWY 06L**

SHEREMETYEVO RADAR 118.100 120.675 122.700 126.600 135.175
SHEREMETYEVO TOWER 118.700 120.700 131.500

TRANSITION LEVEL: By ATC ① TRANSITION ALT: 10000' AD ELEV: 630' / 192m
TRANSITION HGT: (2870) THR ELEV: 600' / 182.5m



DME MR	12.0	10.0	8.0	6.0	4.0	2.0
ALTITUDE/HEIGHT	2710' / (615)	2370' / (549)	2030' / (440)	1690' / (335)	1350' / (230)	1010' / (125)



OCA(H)		A	B	C	D
Straight-in	With SDF	1280' (680') (210)	1280' (680') (210)	1280' (680') (210)	1280' (680') (210)
	WO SDF	1320' (720') (220)	1320' (720') (220)	1320' (720') (220)	1320' (720') (220)
Approach					

① TRANSITION LEVEL:
- FL110 when QNH is 1013 hPa (760mm mercury column) or above;
- FL120 when QNH is 977 hPa (733mm mercury column) or above, but less than 1013 hPa (760mm mercury column);
- FL130 when QNH is less than 977 hPa (733mm mercury column).

GROUND SPEED	km/h	150	180	210	240	270	300	330	360	390	420	450
RATE OF DESCENT	m/s	2.2	2.6	3.0	3.5	3.9	4.3	4.8	5.2	5.6	6.1	6.5
	ft / min	427	512	597	683	768	853	939	1024	1109	1195	1280