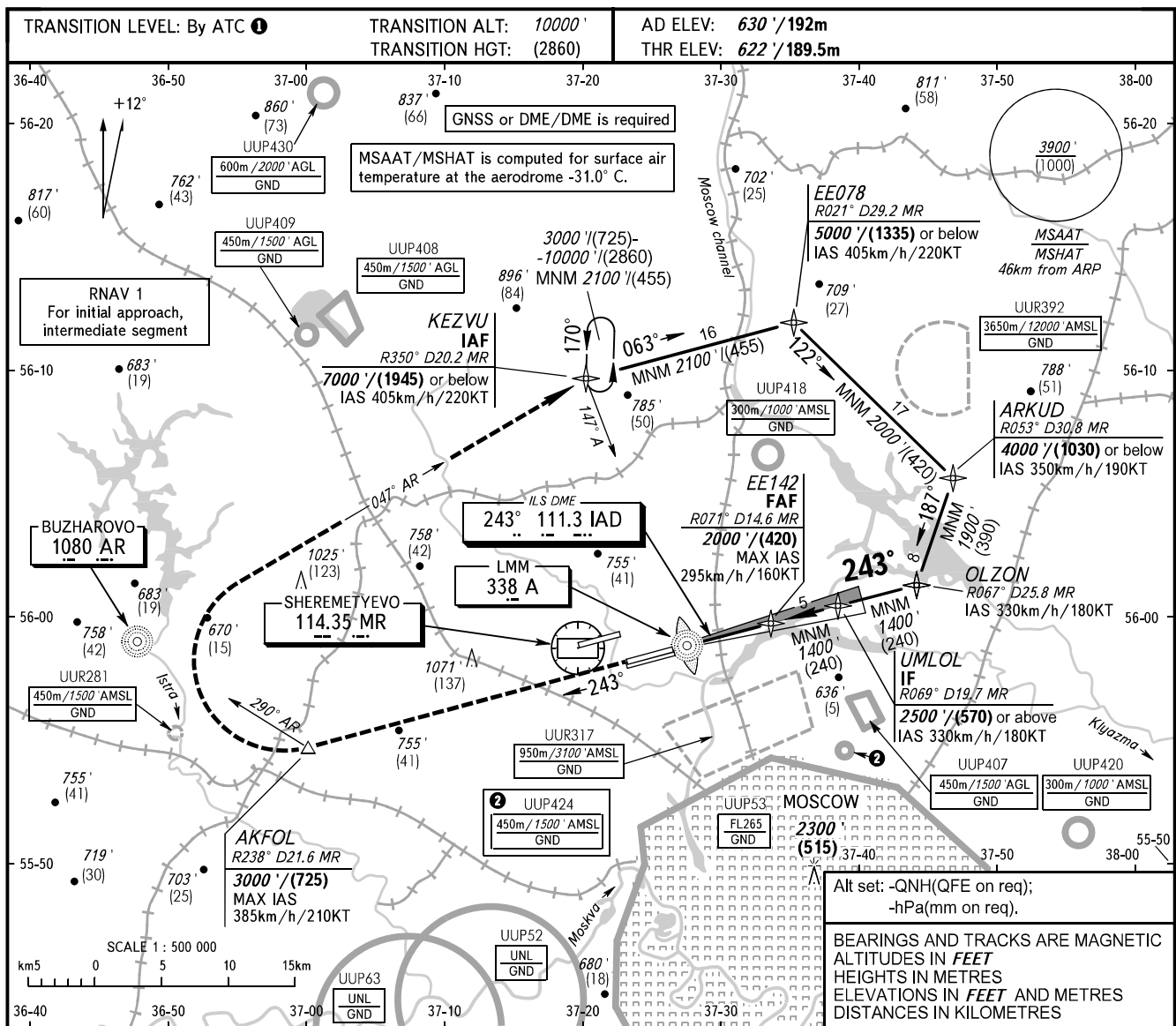


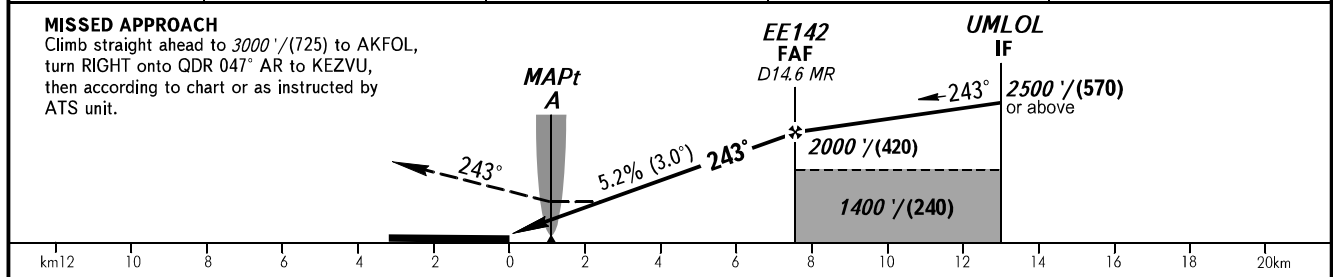
**INSTRUMENT  
APPROACH  
CHART - ICAO**

SHEREMETYEVO RADAR 118.100 120.675 122.700 126.600 135.175  
SHEREMETYEVO TOWER 118.700 120.700 131.500

**MOSCOW, RUSSIA  
SHEREMETYEVO  
LOC RWY 24C**



DME MR	8.0	10.0	12.0	14.0
ALTITUDE/HEIGHT	840' / (70)	1180' / (145)	1520' / (275)	1860' / (380)



OCA(H)		A	B	C	D	<b>① TRANSITION LEVEL:</b> - FL110 when QNH is 1013 hPa (760mm mercury column) or above; - FL120 when QNH is 977 hPa (733mm mercury column) or above, but less than 1013 hPa (760mm mercury column); - FL130 when QNH is less than 977 hPa (733mm mercury column).							
Straight-in Approach	MNM climb gradient for missed APCH	970' (348')	970' (348')	970' (348')	970' (348')								
		(110)	(110)	(110)	(110)								
Circling													
GROUND SPEED		km/h	150	180	210	240	270	300	330	360	390	420	450
RATE OF DESCENT		m/s	2.2	2.6	3.1	3.5	3.9	4.3	4.8	5.2	5.6	6.1	6.5
		ft/min	427	512	597	683	768	853	939	1024	1109	1195	1280