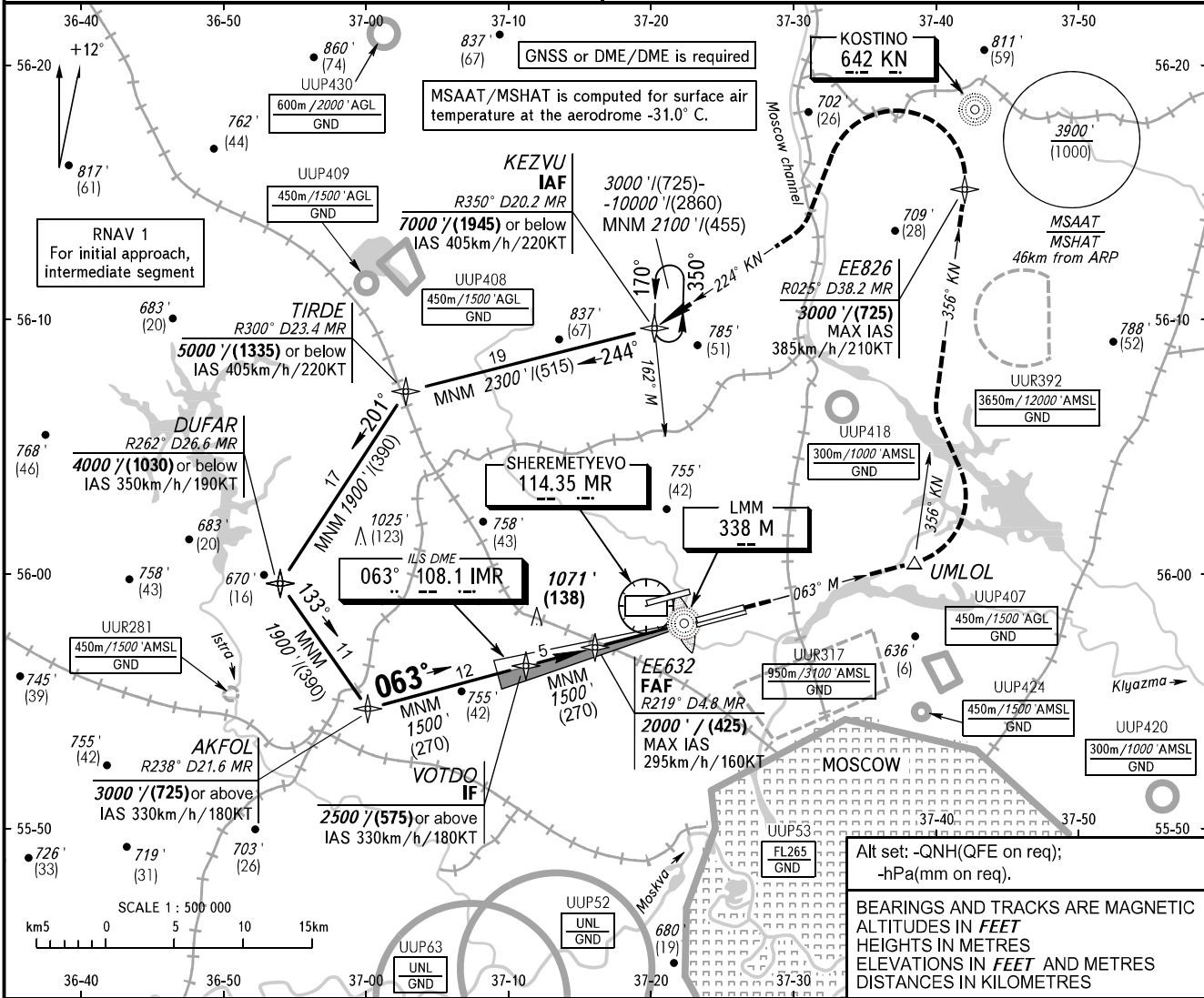


**INSTRUMENT
APPROACH
CHART - ICAO**

SHEREMETYEVO RADAR 118.100 120.675 122.700 126.600 135.175
SHEREMETYEVO TOWER 118.700 120.700 131.500

MOSCOW, RUSSIA
SHEREMETYEVO
LOC RWY 06C

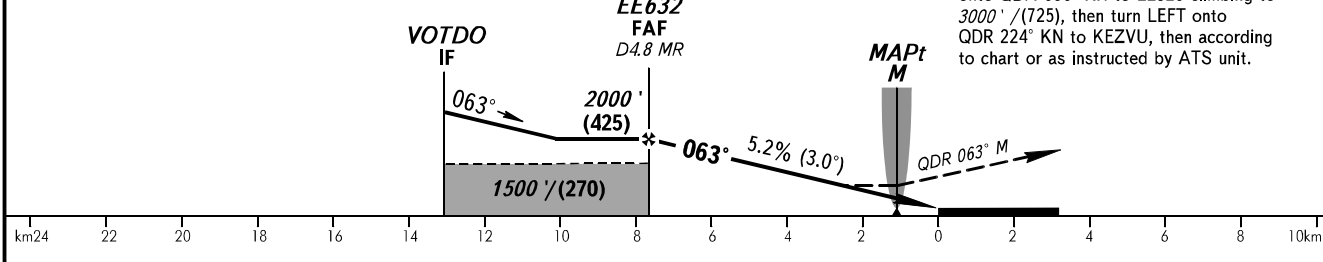
TRANSITION LEVEL: By ATC **1** TRANSITION ALT: 10000' AD ELEV: 630' / 192m
TRANSITION HGT: (2860) THR ELEV: 620' / 189.0m



Alt set: -QNh(QFE on req);
-hPa(mm on req).

BEARINGS AND TRACKS ARE MAGNETIC
ALTITUDES IN FEET
HEIGHTS IN METRES
ELEVATIONS IN FEET AND METRES
DISTANCES IN KILOMETRES

DME MR	4.8
ALTITUDE/HEIGHT	2000' / (425)



OCA(H)		A	B	C	D								
Straight-in Approach	MNM climb gradient for missed APCH	1190' (570') (175)	1190' (570') (175)	1190' (570') (175)	1190' (570') (175)								
	Circling												
GROUND SPEED		km/h	150	180	210	240	270	300	330	360	390	420	450
RATE OF DESCENT		m/s	2.2	2.6	3.1	3.5	3.9	4.3	4.8	5.2	5.6	6.1	6.5
		ft/min	427	512	597	683	768	853	939	1024	1109	1195	1280

1 TRANSITION LEVEL:
- FL110 when QNH is 1013 hPa (760mm mercury column) or above;
- FL120 when QNH is 977 hPa (733mm mercury column) or above, but less than 1013 hPa (760mm mercury column);
- FL130 when QNH is less than 977 hPa (733mm mercury column).

CHANGE: New chart