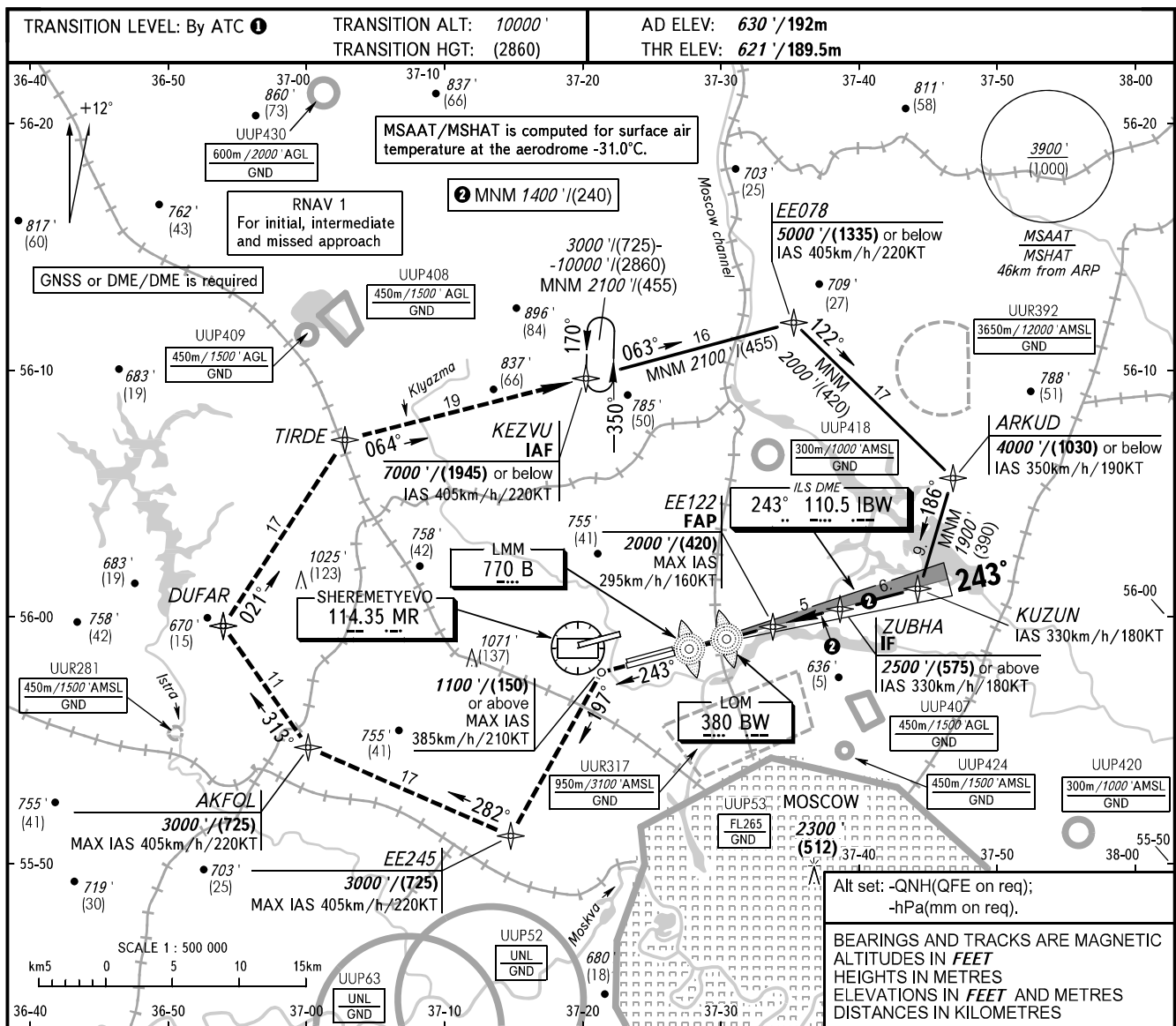


**INSTRUMENT
APPROACH
CHART - ICAO**

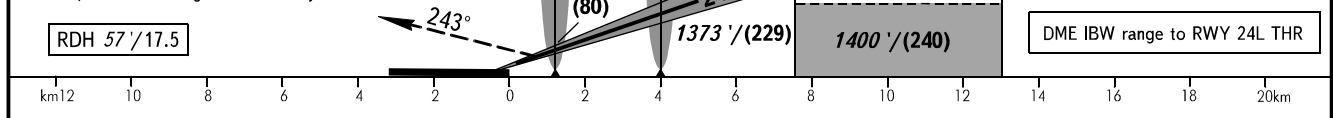
SHEREMETYEVO RADAR 118.100 120.675 122.700 126.600 135.175
SHEREMETYEVO TOWER 118.700 120.700 131.500

**MOSCOW, RUSSIA
SHEREMETYEVO
ILS CAT I/II RWY 24L**



DIST to RWY 24L THR	2.0	4.0	6.0
ALTITUDE/HEIGHT	1020'/(120)	1370'/(230)	1710'/(330)

MISSED APPROACH
Climb straight ahead to 1100'/(150) or above, turn LEFT to EE245 climbing to 3000'/(725), turn RIGHT to AKFOL-DUFAR-TIRDE-KEZVU, then according to chart or by ATC.



OCA(H)		A	B	C	D								
Straight-in Approach	MNM climb gradient for missed APCH	759' (138') (43)	767' (146') (45)	779' (158') (49)	793' (172') (53)								
		671' (50') (16)	681' (60') (19)	693' (72') (22)	706' (85') (26)								
GROUND SPEED		km/h	150	180	210	240	270	300	330	360	390	420	450
RATE OF DESCENT		m/s	2.2	2.6	3.1	3.5	3.9	4.3	4.8	5.2	5.6	6.1	6.5
		ft/min	427	512	597	683	768	853	939	1024	1109	1195	1280

TRANSITION LEVEL:
- FL110 when QNH is 1013 hPa (760mm mercury column) or above;
- FL120 when QNH is 977 hPa (733mm mercury column) or above, but less than 1013 hPa (760mm mercury column);
- FL130 when QNH is less than 977 hPa (733mm mercury column).