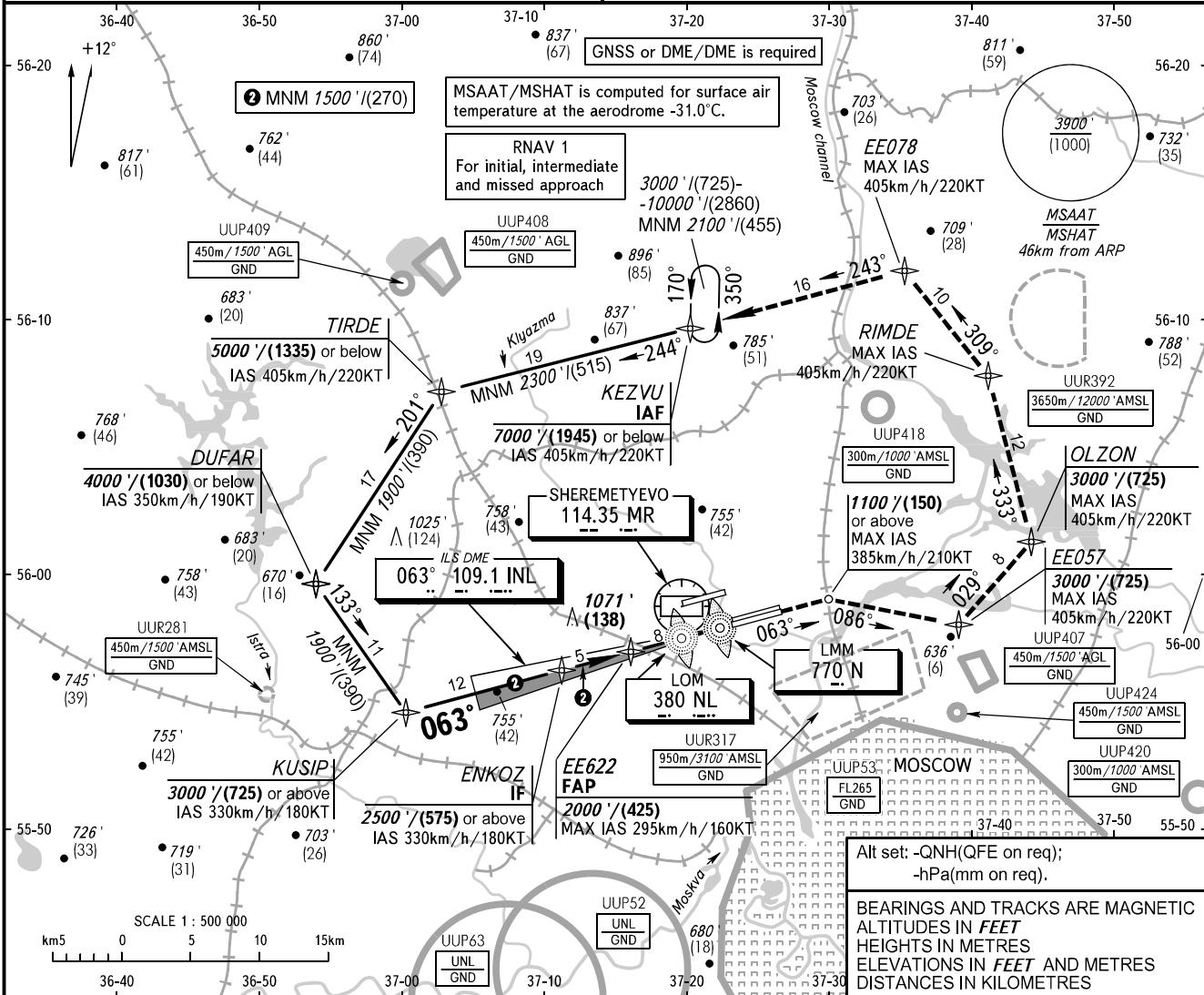


**INSTRUMENT
APPROACH
CHART - ICAO**

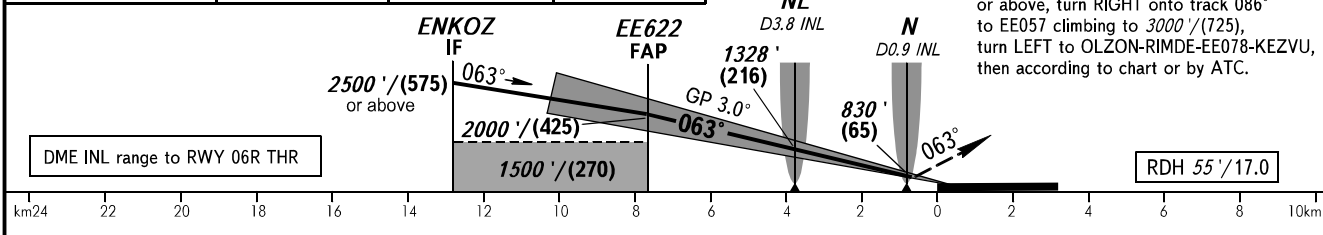
SHEREMETYEVO RADAR 118.100 120.675 122.700 126.600 135.175
SHEREMETYEVO TOWER 118.700 120.700 131.500

MOSCOW, RUSSIA
SHEREMETYEVO
ILS CAT I/II/IIIA RWY 06R

TRANSITION LEVEL: By ATC ① TRANSITION ALT: 10000' AD ELEV: 630' / 192m
TRANSITION HGT: (2860) THR ELEV: 619' / 188.5m



DIST to RWY 06R THR	6.0	4.0	2.0
ALTITUDE/HEIGHT	1710' / (335)	1360' / (225)	1020' / (125)



OCA(H)		A	B	C	D	
Straight-in Approach	MNM climb gradient for missed APCH	CAT I	761' (142') (44)	771' (152') (47)	782' (163') (50)	796' (177') (54)
		CAT II	670' (51') (16)	680' (61') (19)	694' (75') (23)	707' (88') (27)
		CAT IIIA	APPROVED			

① **TRANSITION LEVEL:**
- FL110 when QNH is 1013 hPa (760mm mercury column) or above;
- FL120 when QNH is 977 hPa (733mm mercury column) or above, but less than 1013 hPa (760mm mercury column);
- FL130 when QNH is less than 977 hPa (733mm mercury column).

GROUND SPEED	km/h	150	180	210	240	270	300	330	360	390	420	450
	m/s	2.2	2.6	3.1	3.5	3.9	4.3	4.8	5.2	5.6	6.1	6.5
RATE OF DESCENT	ft/min	427	512	597	683	768	853	939	1024	1109	1195	1280