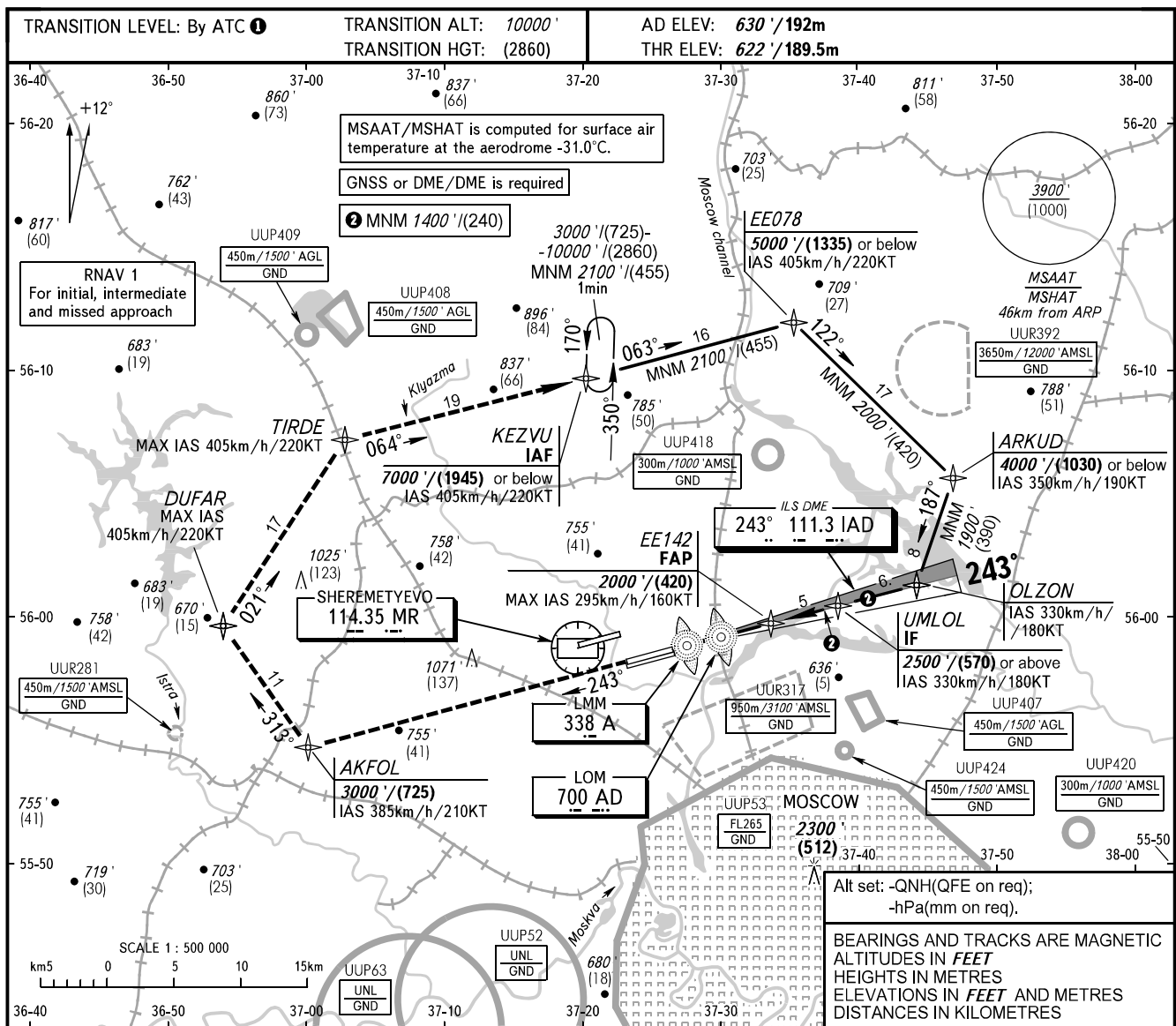


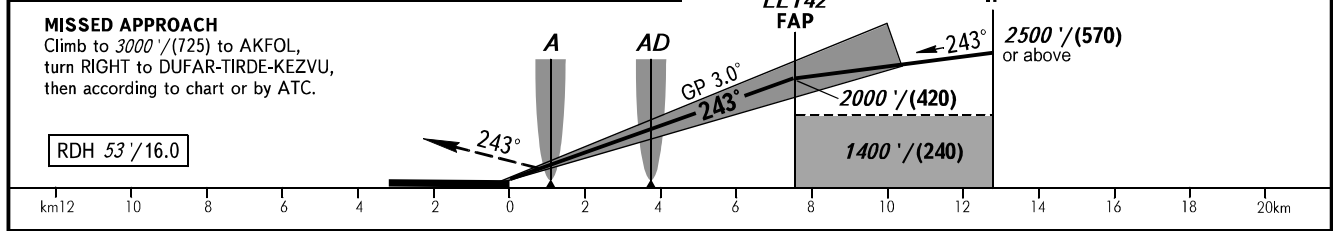
**INSTRUMENT
APPROACH
CHART - ICAO**

SHEREMETYEVO RADAR 118.100 120.675 122.700 126.600 135.175
SHEREMETYEVO TOWER 118.700 120.700 131.500

**MOSCOW, RUSSIA
SHEREMETYEVO
ILS CAT I/II/IIIA RWY 24C**



DIST to RWY 24C THR	2.0	4.0	6.0
ALTITUDE/HEIGHT	1020'/(120)	1370'/(230)	1710'/(330)



OCA(H)		A	B	C	D								
Straight-in Approach	MNM climb gradient for missed APCH												
	CAT I	822' (200') (60)	822' (200') (60)	822' (200') (60)	822' (200') (60)								
	CAT II	722' (100') (30)	722' (100') (30)	722' (100') (30)	722' (100') (30)								
	CAT IIIA	APPROVED											
GROUND SPEED		km/h	150	180	210	240	270	300	330	360	390	420	450
RATE OF DESCENT		m/s	2.2	2.6	3.1	3.5	3.9	4.3	4.8	5.2	5.6	6.1	6.5
		ft/min	427	512	597	683	768	853	939	1024	1109	1195	1280

1 TRANSITION LEVEL:
- FL110 when QNH is 1013 hPa (760mm mercury column) or above;
- FL120 when QNH is 977 hPa (733mm mercury column) or above, but less than 1013 hPa (760mm mercury column);
- FL130 when QNH is less than 977 hPa (733mm mercury column).