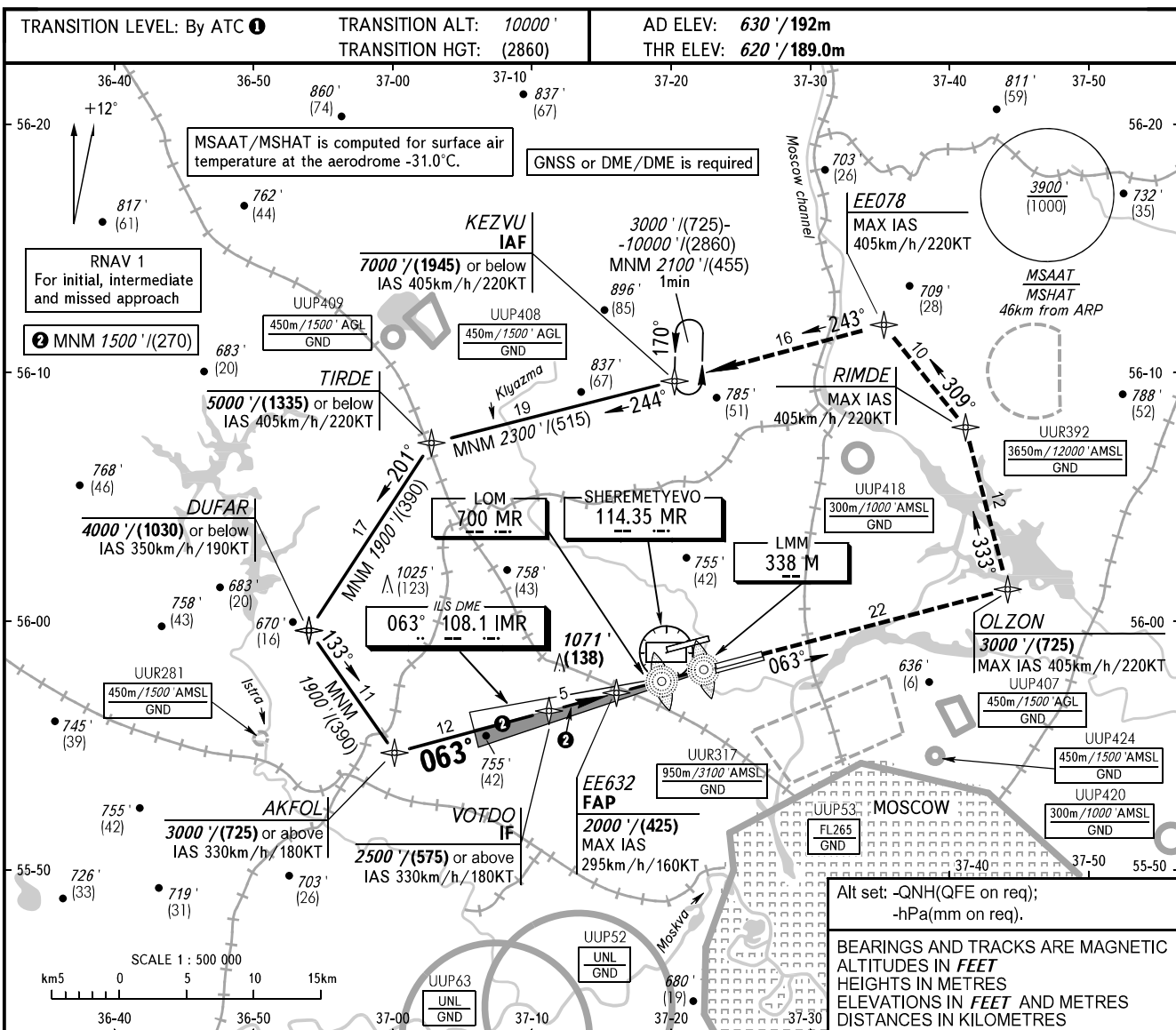


**INSTRUMENT
APPROACH
CHART - ICAO**

SHEREMETYEVO RADAR 118.100 120.675 122.700 126.600 135.175
SHEREMETYEVO TOWER 118.700 120.700 131.500

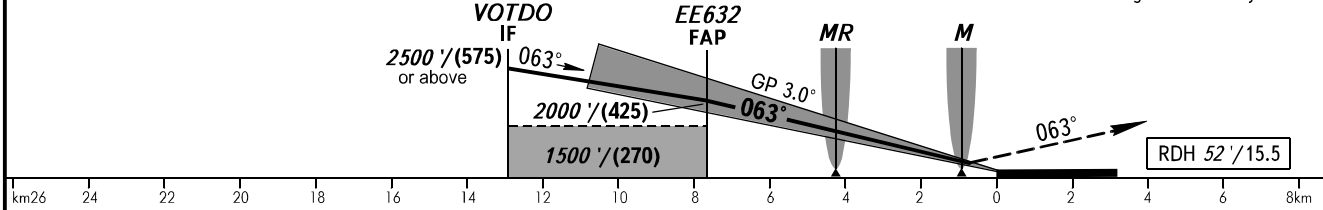
**MOSCOW, RUSSIA
SHEREMETYEVO
ILS CAT I RWY 06C**



DIST to RWY 06C THR	6.0	4.0	2.0
ALTITUDE/HEIGHT	1710' / (335)	1360' / (225)	1020' / (125)

DME IMR range to RWY 06C THR

MISSED APPROACH
Climb to 3000' / (725) to OLZON, turn LEFT to RIMDE-EE078-KEZVU, then according to chart or by ATC.



OCA(H)		A	B	C	D
Straight-in Approach	MNM climb gradient for missed APCH	CAT I			
		820' (200') (60)	820' (200') (60)	820' (200') (60)	820' (200') (60)

1 TRANSITION LEVEL:
- FL110 when QNH is 1013 hPa (760mm mercury column) or above;
- FL120 when QNH is 977 hPa (733mm mercury column) or above, but less than 1013 hPa (760mm mercury column);
- FL130 when QNH is less than 977 hPa (733mm mercury column).

GROUND SPEED	km/h	150	180	210	240	270	300	330	360	390	420	450
RATE OF DESCENT	m/s	2.2	2.6	3.1	3.5	3.9	4.3	4.8	5.2	5.6	6.1	6.5
	ft/min	427	512	597	683	768	853	939	1024	1109	1195	1280

CHANGE: New chart