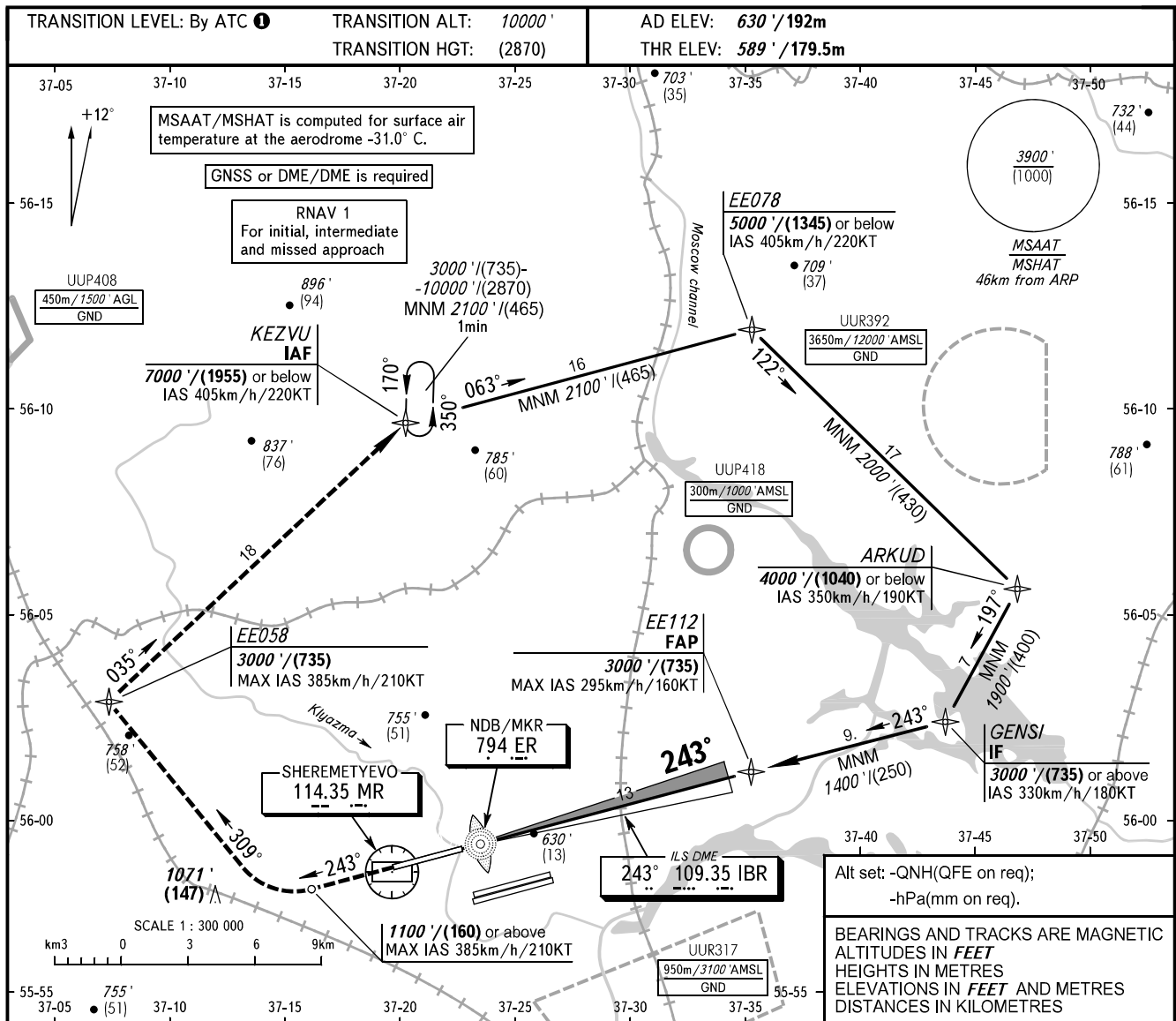


**INSTRUMENT
APPROACH
CHART - ICAO**

SHEREMETYEVO RADAR 118.100 120.675 122.700 126.600 135.175
SHEREMETYEVO TOWER 118.700 120.700 131.500

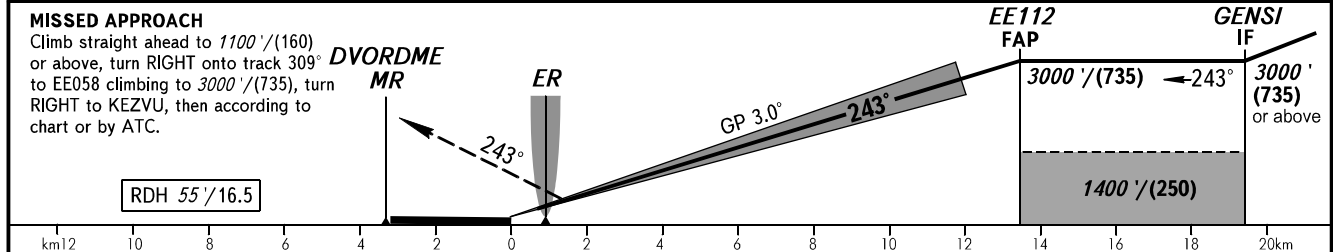
**MOSCOW, RUSSIA
SHEREMETYEVO
ILS CAT I/II/IIIA RWY 24R**



Alt set: -QNH(QFE on req);
-hPa(mm on req).

BEARINGS AND TRACKS ARE MAGNETIC
ALTITUDES IN FEET
HEIGHTS IN METRES
ELEVATIONS IN FEET AND METRES
DISTANCES IN KILOMETRES

DIST to RWY 24R THR	2.0	4.0	6.0	8.0	10.0	12.0	13.4
ALTITUDE/HEIGHT	980'/(120)	1330'/(230)	1670'/(330)	2010'/(435)	2350'/(540)	2690'/(645)	3000'/(735)



OCA(H)		A	B	C	D																
Straight-in Approach	MNM climb gradient for missed APCH	<table border="1"> <tr> <td>CAT I</td> <td>789' (200') (60)</td> <td>789' (200') (60)</td> <td>789' (200') (60)</td> <td>789' (200') (60)</td> </tr> <tr> <td>CAT II</td> <td>689' (100') (30)</td> <td>689' (100') (30)</td> <td>689' (100') (30)</td> <td>689' (100') (30)</td> </tr> <tr> <td>CAT IIIA</td> <td colspan="4">APPROVED</td> </tr> </table>					CAT I	789' (200') (60)	789' (200') (60)	789' (200') (60)	789' (200') (60)	CAT II	689' (100') (30)	689' (100') (30)	689' (100') (30)	689' (100') (30)	CAT IIIA	APPROVED			
	CAT I	789' (200') (60)	789' (200') (60)	789' (200') (60)	789' (200') (60)																
	CAT II	689' (100') (30)	689' (100') (30)	689' (100') (30)	689' (100') (30)																
CAT IIIA	APPROVED																				
GROUND SPEED	km/h	150	180	210	240	270	300	330	360	390	420	450									
RATE OF DESCENT	m/s	2.2	2.6	3.0	3.5	3.9	4.3	4.8	5.2	5.6	6.1	6.5									
	ft/min	427	512	597	683	768	853	939	1024	1109	1195	1280									

① TRANSITION LEVEL:
- FL110 when QNH is 1013 hPa (760mm mercury column) or above;
- FL120 when QNH is 977 hPa (733mm mercury column) or above, but less than 1013 hPa (760mm mercury column);
- FL130 when QNH is less than 977 hPa (733mm mercury column).