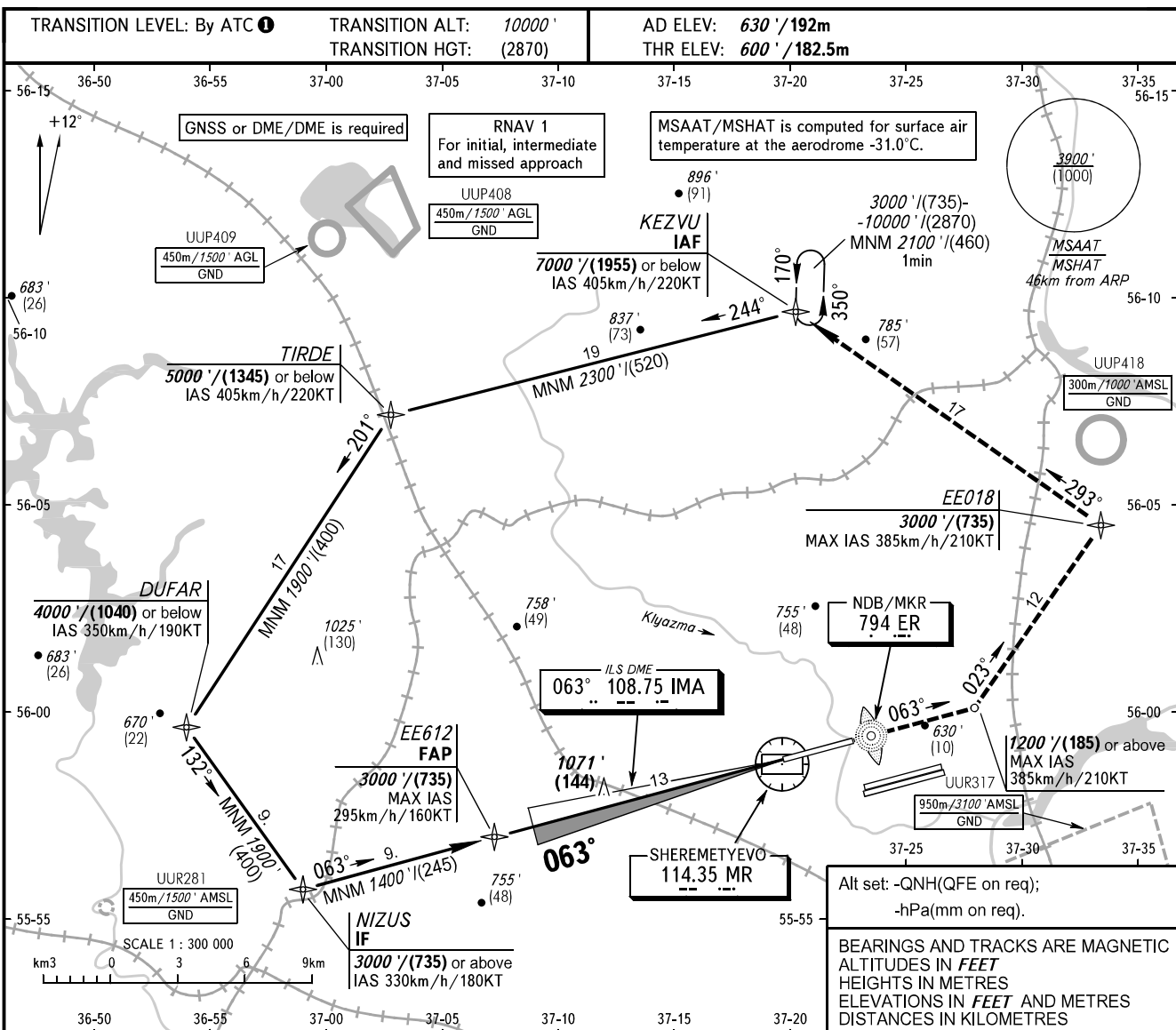


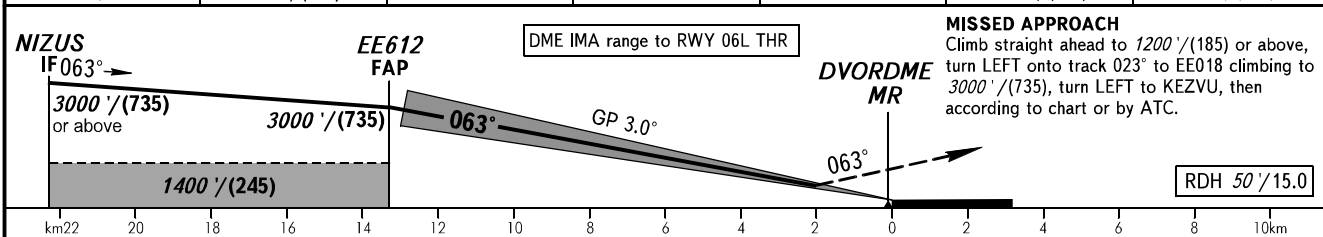
**INSTRUMENT
APPROACH
CHART - ICAO**

SHEREMETYEVO RADAR 118.100 120.675 122.700 126.600 135.175
SHEREMETYEVO TOWER 118.700 120.700 131.500

MOSCOW, RUSSIA
SHEREMETYEVO
ILS CAT I/II/IIIA RWY 06L



DIST RWY 06L THR	12.0	10.0	8.0	6.0	4.0	2.0
ALTITUDE/HEIGHT	2720' (650)	2370' (540)	2030' (440)	1690' (335)	1340' (230)	1000' (125)



OCA(H)		A	B	C	D	
Straight-in Approach	MNM climb gradient for missed APCH	CAT I	800' (200') (60)	800' (200') (60)	800' (200') (60)	800' (200') (60)
		CAT II	700' (100') (30)	700' (100') (30)	700' (100') (30)	700' (100') (30)
		CAT IIIA	APPROVED			

TRANSITION LEVEL:
 - FL110 when QNH is 1013 hPa (760mm mercury column) or above;
 - FL120 when QNH is 977 hPa (733mm mercury column) or above, but less than 1013 hPa (760mm mercury column);
 - FL130 when QNH is less than 977 hPa (733mm mercury column).

GROUND SPEED	km/h	150	180	210	240	270	300	330	360	390	420	450
RATE OF DESCENT	m/s	2.2	2.6	3.0	3.5	3.9	4.3	4.8	5.2	5.6	6.1	6.5
	ft/min	427	512	597	683	768	853	939	1024	1109	1195	1280

CHANGE: New chart