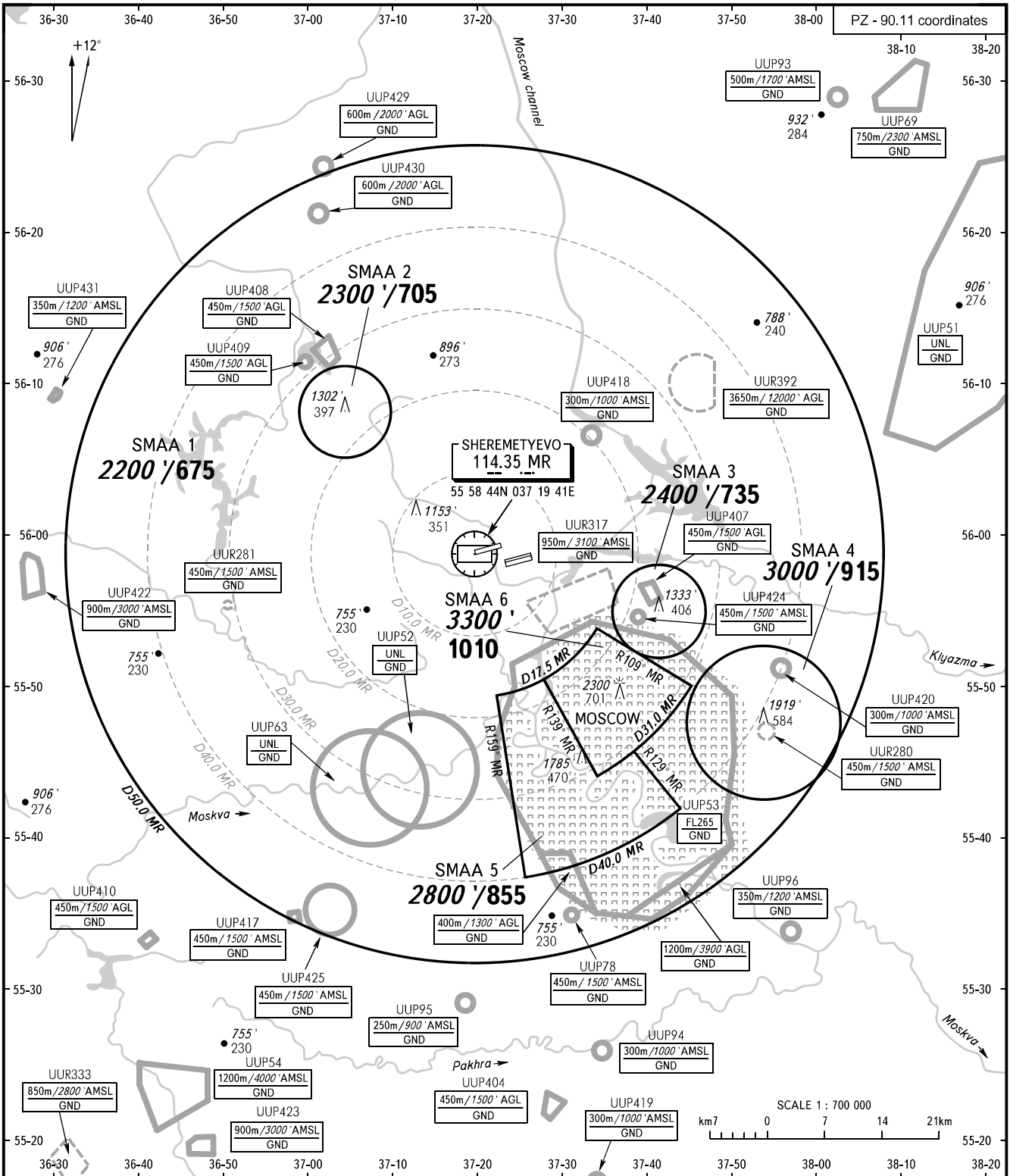


ATC SURVEILLANCE MINIMUM
ALTITUDE CHART - ICAO

ELEV
630 / 192m

TRANSITION ALTITUDE: 10000' / 3050

MOSCOW, RUSSIA
SHEREMETYEVO



MOSCOW APPROACH 118.950
SHEREMETYEVO RADAR 118.100 120.675 122.700 126.600 135.175

WARNING:

1. The chart may only be used for cross-checking of altitudes assigned while the aircraft is under radar control.
2. When vectoring is carried out under low-temperature conditions, minimum vectoring altitudes for IFR flight must be corrected by altimeter temperature correction.

BEARINGS AND TRACKS ARE MAGNETIC
ALTITUDES IN FEET AND METRES
ELEVATIONS IN FEET AND METRES
DISTANCES IN KILOMETRES

Alt set: -QNH(QFE on req);
-hPa(mm on req).

CHANGE: Radial