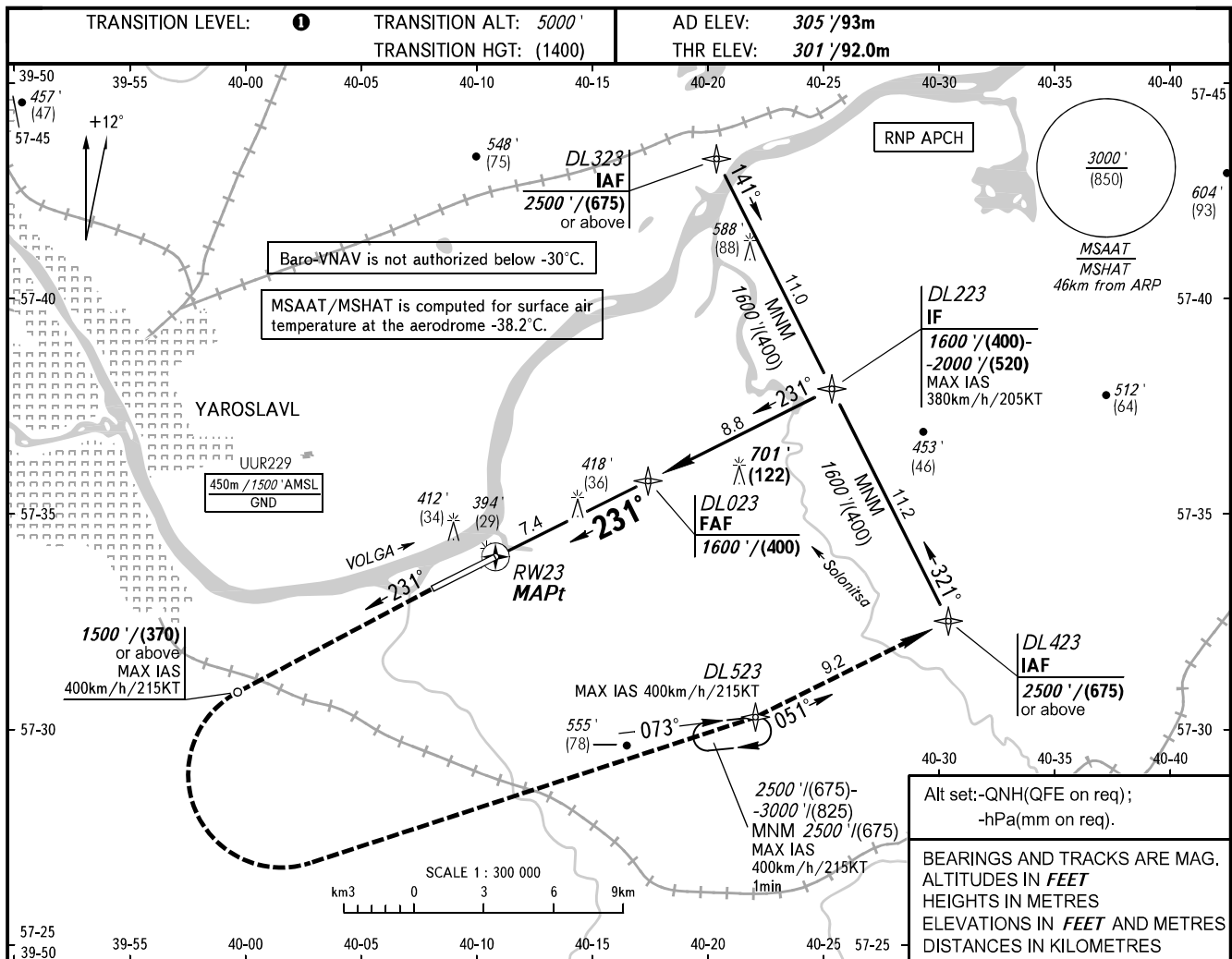


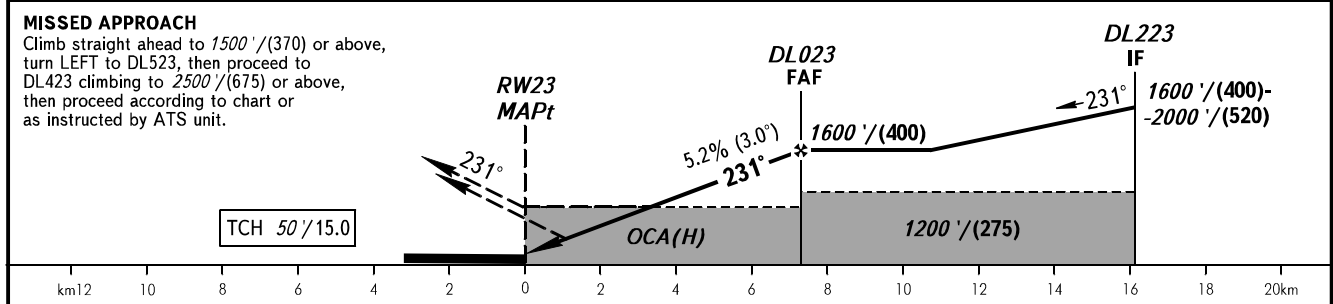
INSTRUMENT
APPROACH
CHART - ICAO

TOWER 120.300

YAROSLAVL, RUSSIA
TUNOSHNA
RNP RWY 23



DIST to RW23	3.0	4.0	5.0	6.0	7.0	7.4
ALTITUDE/HEIGHT	865'/(175)	1035'/(225)	1205'/(280)	1375'/(330)	1545'/(380)	1600'/(400)



		OCA(H)				TRANSITION LEVEL:											
		A	B	C	D	- FL060 when QNH is 1013 hPa (760mm mercury column) or above; - FL070 when QNH is 977 hPa (733mm mercury column) or above, but less than 1013 hPa (760mm mercury column); - FL080 when QNH is less than 977 hPa (733mm mercury column).											
Straight-in Approach	LNAV/VNAV	530' (230') (70)	540' (240') (75)	550' (250') (80)	580' (280') (90)	Radius of visual manoeuvring areas: CAT A - 3100m, CAT B - 4830m, CAT C - 7660m, CAT D - 12590m.											
	LNAV	670' (370') (115)	670' (370') (115)	670' (370') (115)	670' (370') (115)												
Circling		840' (540') (165)	840' (540') (165)	1010' (710') (220)	1900' (1600') (490)												
GROUND SPEED	km/h	150	180	210	240	270	300	330	360	390	420	450					
	kt	81	97	113	130	146	162	178	194	211	227	243					
RATE OF DESCENT	m/s	2.2	2.6	3.1	3.5	3.9	4.4	4.8	5.2	5.6	6.1	6.5					
	ft/min	433	512	610	689	768	866	945	1024	1102	1201	1280					