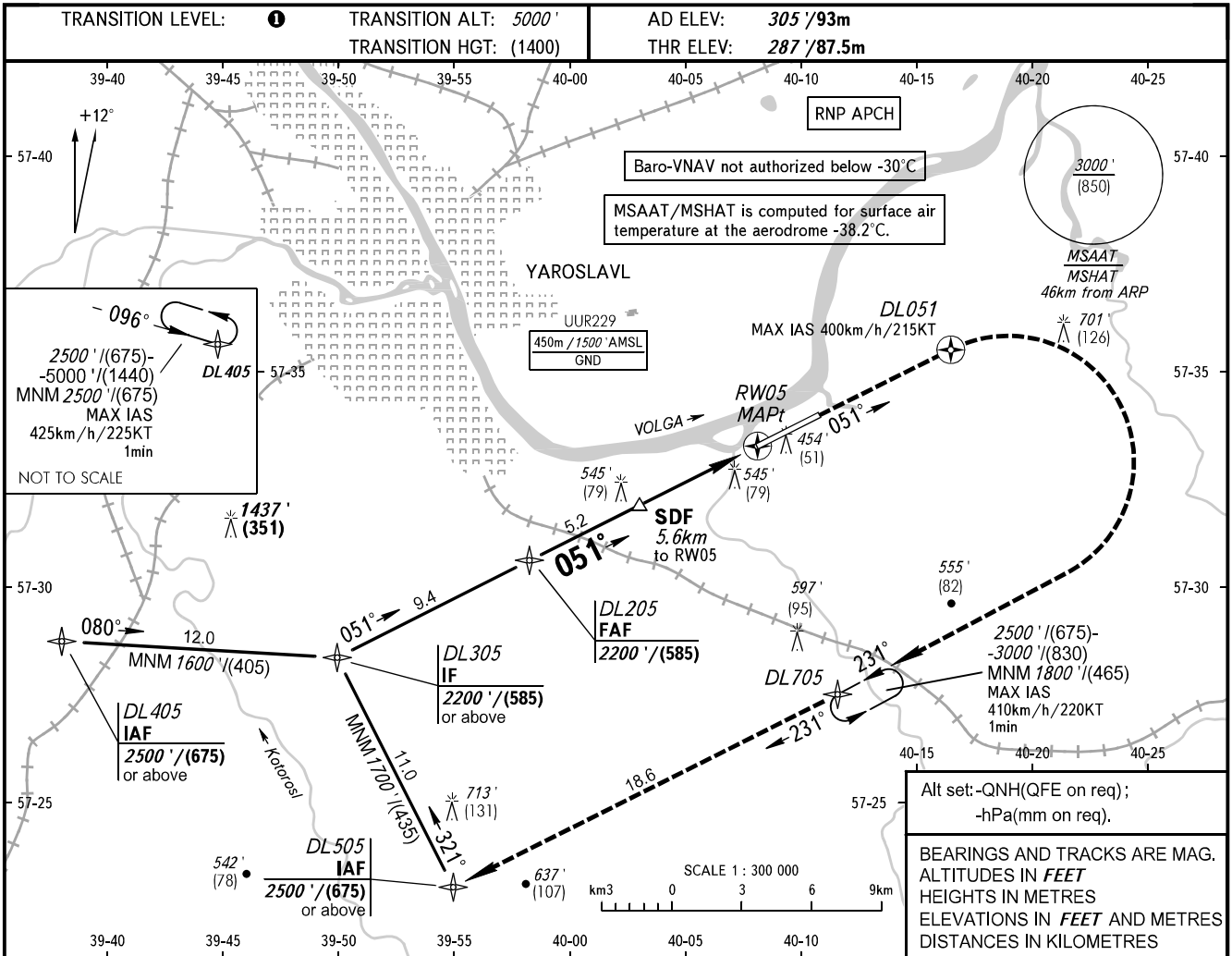


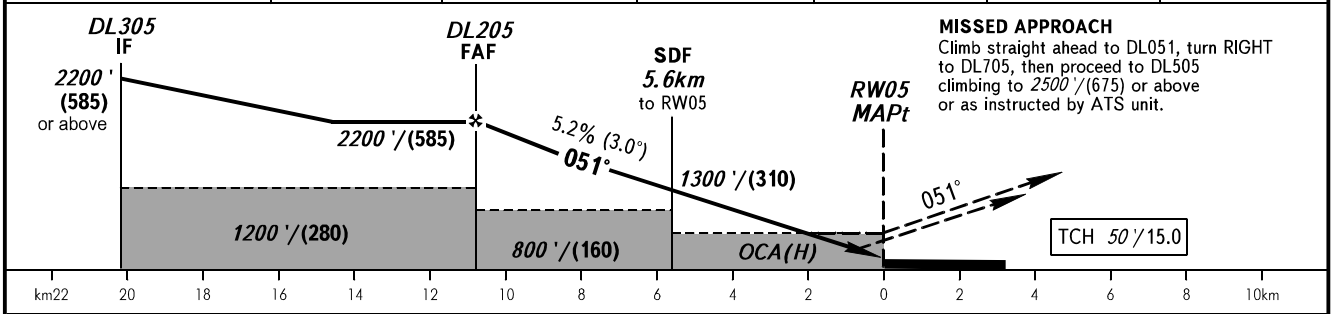
**INSTRUMENT
APPROACH
CHART - ICAO**

TOWER **120.300**

**YAROSLAVL, RUSSIA
TUNOSHNA
RNP RWY 05**



DIST to RW05	10.9	10.0	8.0	6.0	4.0	3.0
ALTITUDE/HEIGHT	2200'/(585)	2050'/(540)	1710'/(435)	1360'/(330)	1020'/(225)	850'/(175)



OCA(H)		A	B	C	D	TRANSITION LEVEL: - FL060 when QNH is 1013 hPa (760mm mercury column) or above; - FL070 when QNH is 977 hPa (733mm mercury column) or above, but less than 1013 hPa (760mm mercury column); - FL080 when QNH is less than 977 hPa (733mm mercury column). Radius of visual manoeuvring areas: CAT A - 3100m, CAT B - 4830m, CAT C - 7660m, CAT D - 12590m.
Straight-in Approach	LNAV/VNAV	680' (400') (120)	690' (410') (125)	700' (420') (130)	710' (430') (130)	
	LNAV	710' (430') (130)	710' (430') (130)	710' (430') (130)	710' (430') (130)	
Circling		840' (560') (170)	840' (560') (170)	1010' (730') (225)	1900' (1620') (495)	

GROUND SPEED	km/h	150	180	210	240	270	300	330	360	390	420	450
	kt	81	97	113	130	146	162	178	194	211	227	243
RATE OF DESCENT	m/s	2.2	2.6	3.1	3.5	3.9	4.4	4.8	5.2	5.6	6.1	6.5
	ft/min	433	512	610	689	768	866	945	1024	1102	1201	1280

CHANGE: New chart