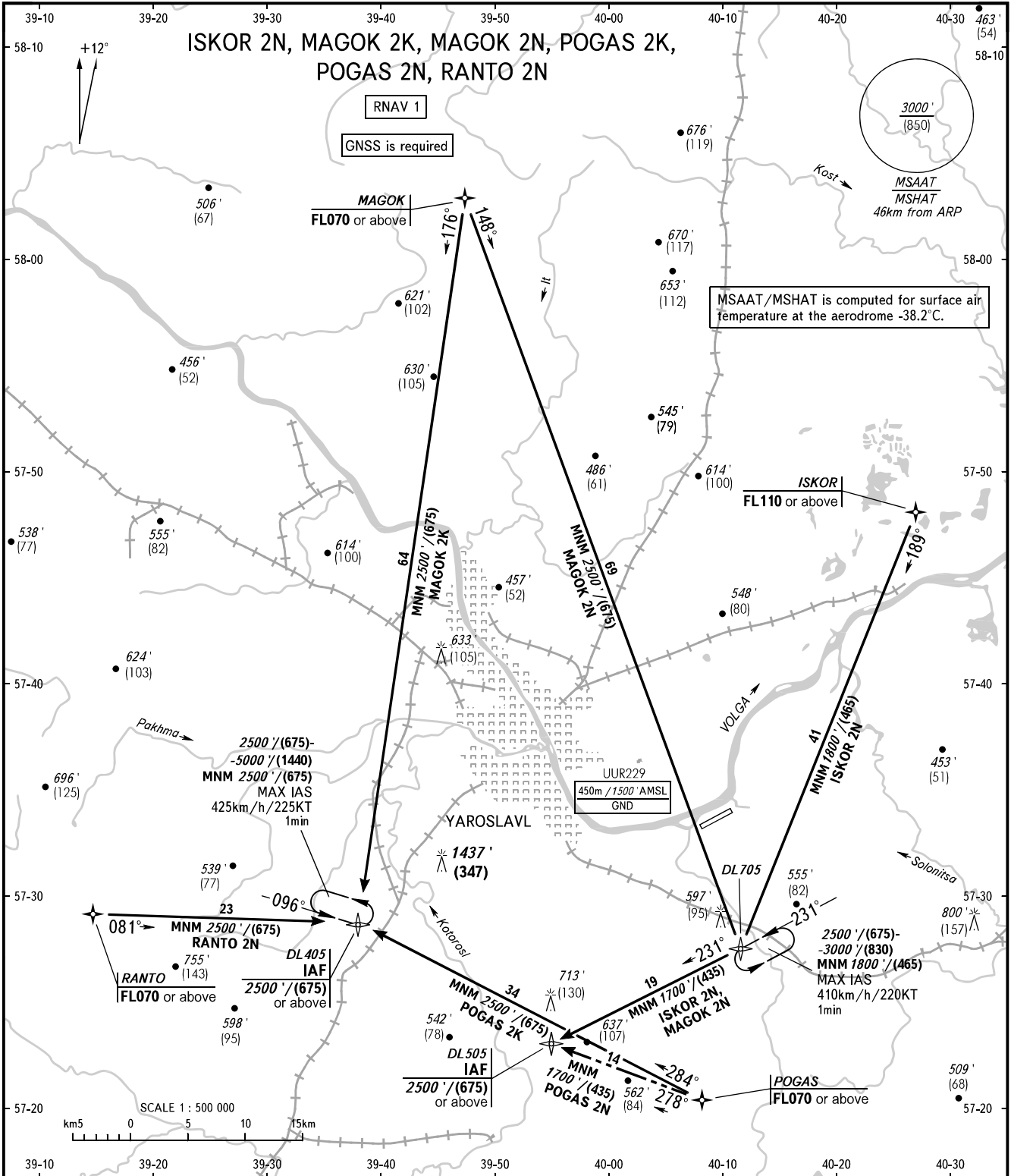


STANDARD ARRIVAL CHART  
INSTRUMENT (STAR) - ICAO

YAROSLAVL, RUSSIA  
TUNOSHNA  
RNAV RWY 05

TRANSITION  
LEVEL: **1**



TOWER 120.300

- 1** TRANSITION LEVEL:
- FL060 when QNH is 1013 hPa (760mm mercury column) or above;
  - FL070 when QNH is 977 hPa (733mm mercury column) or above, but less than 1013 hPa (760mm mercury column);
  - FL080 when QNH is less than 977 hPa (733mm mercury column).

BEARINGS AND TRACKS ARE MAGNETIC  
ALTITUDES IN FEET  
HEIGHTS IN METRES  
ELEVATIONS IN FEET AND METRES  
DISTANCES IN KILOMETRES

Alt set: -QNH(QFE on req);  
-hPa(mm on req).

CHANGE: New chart