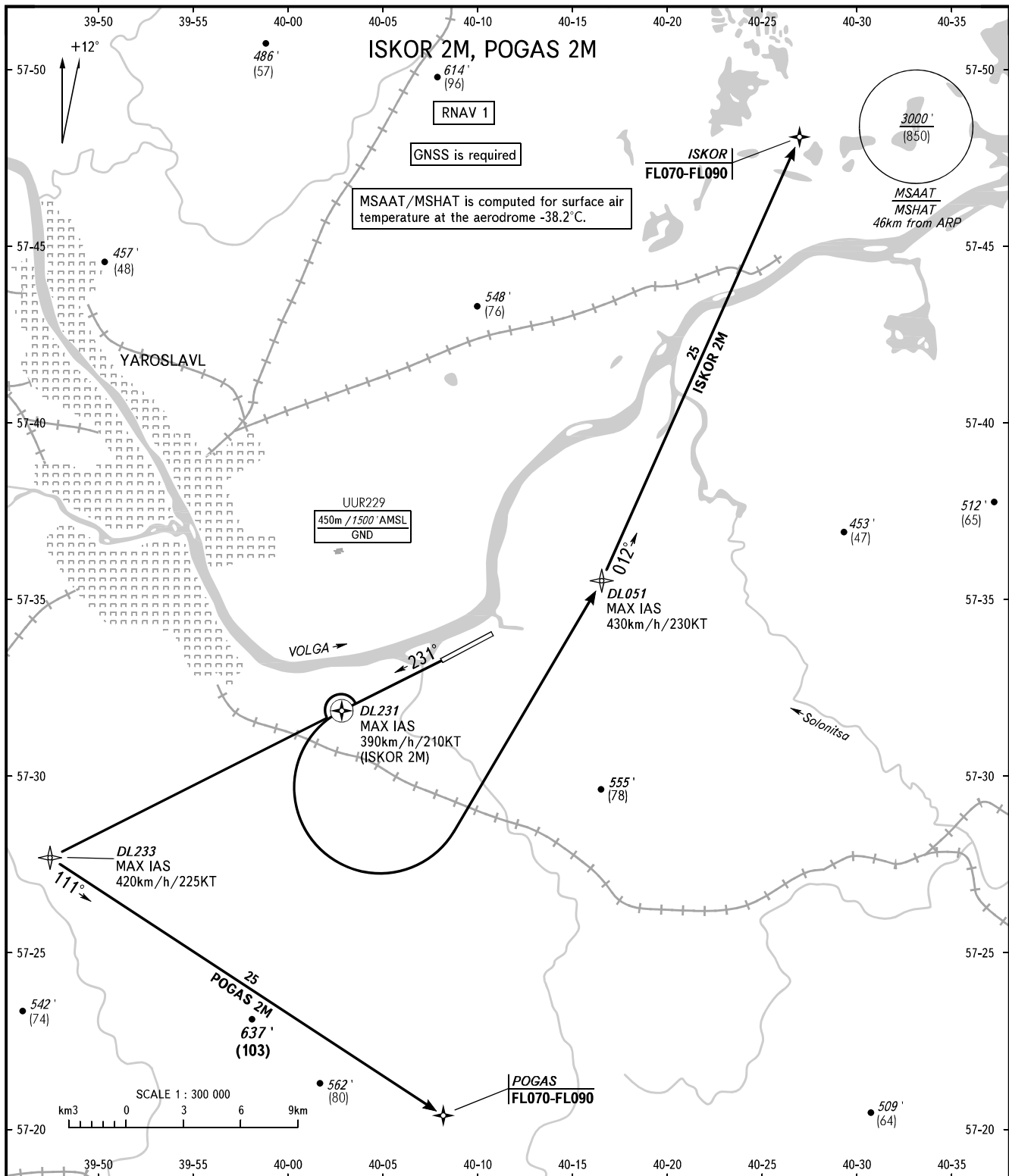


STANDARD DEPARTURE CHART
INSTRUMENT (SID) - ICAO

TRANSITION ALT : 5000'
TRANSITION HGT : (1400)

YAROSLAVL, RUSSIA
TUNOSHNA
RNAV RWY 23



<p>TOWER 120.300</p>		<p>WARNING The minimum climb gradient required due to the airspace structure - 4.3% up to FL070 for POGAS 2M.</p>
<p>BEARINGS AND TRACKS ARE MAGNETIC ALTITUDES IN FEET HEIGHTS IN METRES ELEVATIONS IN FEET AND METRES DISTANCES IN KILOMETRES</p>	<p>Alt set: -QNH(QFE on req); -hPa(mm on req).</p>	<p>CHANGE: New chart</p>