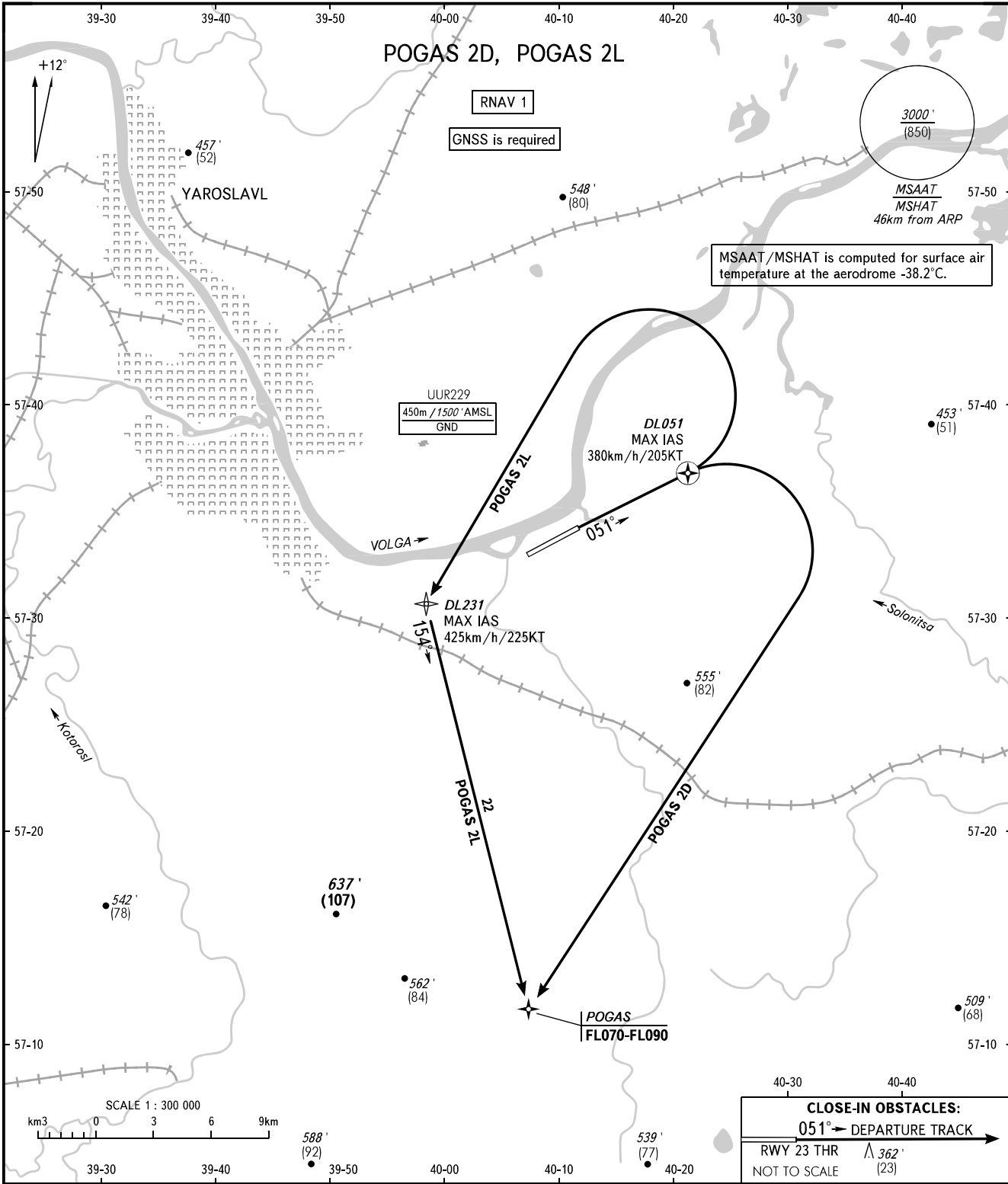


STANDARD DEPARTURE CHART  
INSTRUMENT (SID) - ICAO

TRANSITION ALT : 5000'  
TRANSITION HGT : (1400)

YAROSLAVL, RUSSIA  
TUNOSHNA  
RNAV RWY 05



TOWER 120.300

**WARNING**

The minimum climb gradients required due to the airspace structure:  
 - 4.9% up to FL070 for POGAS 2D;  
 - 3.7% up to FL070 for POGAS 2L.

BEARINGS AND TRACKS ARE MAGNETIC  
 ALTITUDES IN FEET  
 HEIGHTS IN METRES  
 ELEVATIONS IN FEET AND METRES  
 DISTANCES IN KILOMETRES

Alt set: -QNH(QFE on req);  
 -hPa(mm on req).

CHANGE: New chart