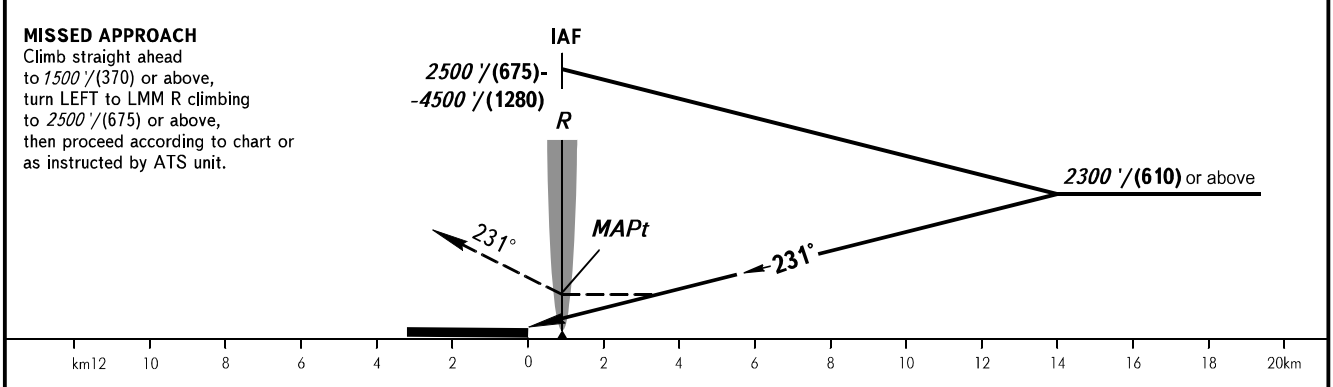
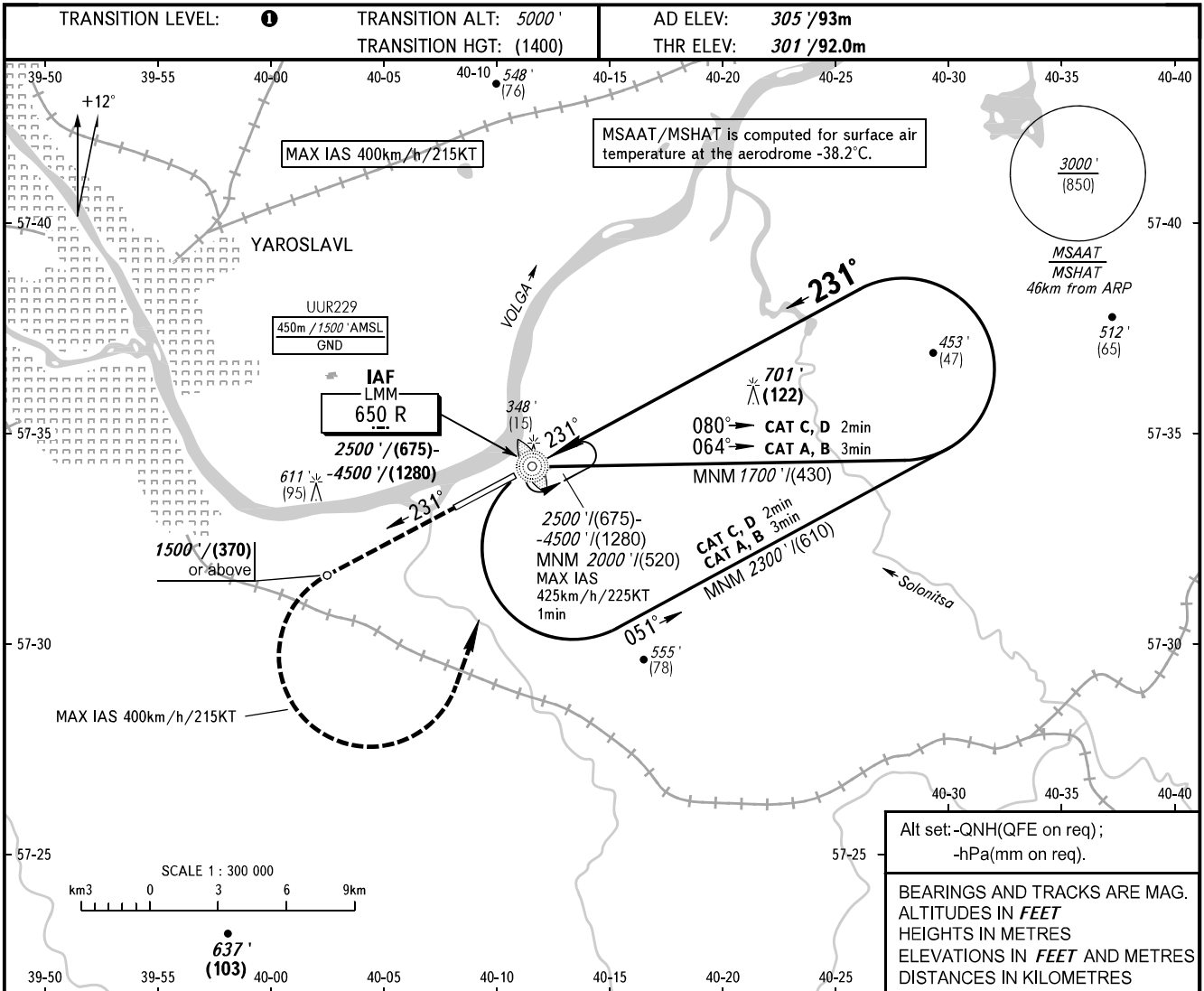


**INSTRUMENT  
APPROACH  
CHART - ICAO**

TOWER **120.300**

**YAROSLAVL, RUSSIA**  
TUNOSHNA  
NDB RWY 23



OCA(H)		A	B	C	D
Straight-in Approach		1000' (700') (215)	1000' (700') (215)	1060' (760') (235)	1060' (760') (235)
	Circling	1000' (700') (215)	1000' (700') (215)	1060' (760') (235)	1900' (1600') (490)

① **TRANSITION LEVEL:**  
 - FL060 when QNH is 1013 hPa (760mm mercury column) or above;  
 - FL070 when QNH is 977 hPa (733mm mercury column) or above, but less than 1013 hPa (760mm mercury column);  
 - FL080 when QNH is less than 977 hPa (733mm mercury column).

Radius of visual manoeuvring areas:  
 CAT A - 3100m, CAT B - 4830m,  
 CAT C - 7660m, CAT D - 12590m.

CHANGE: New chart