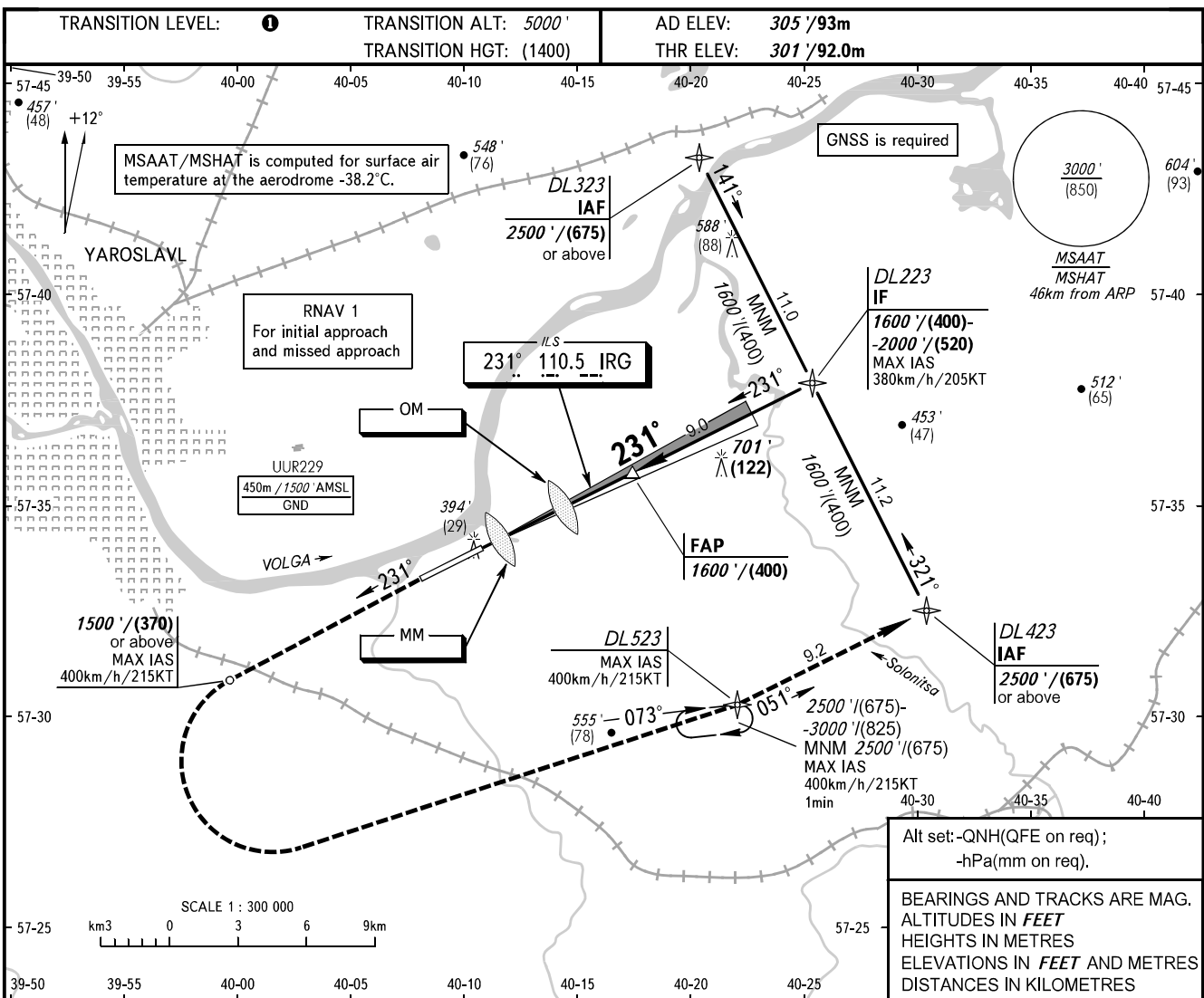


**INSTRUMENT
APPROACH
CHART - ICAO**

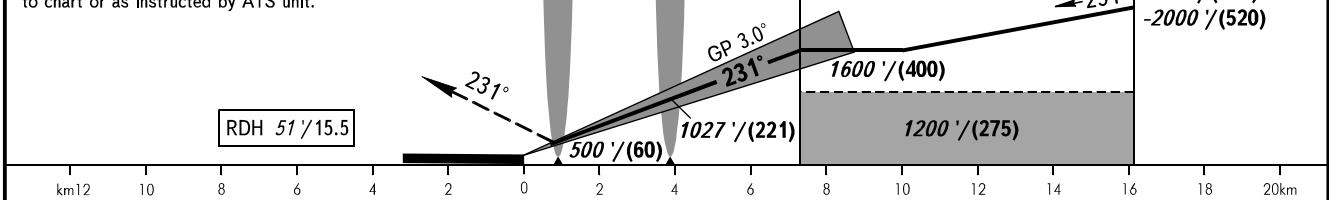
TOWER **120.300**

**YAROSLAVL, RUSSIA
TUNOSHNA
ILS Y CAT I RWY 23**



Alt set: -QNH(QFE on req);
-hPa(mm on req).

BEARINGS AND TRACKS ARE MAG.
ALTITUDES IN FEET
HEIGHTS IN METRES
ELEVATIONS IN FEET AND METRES
DISTANCES IN KILOMETRES



OCA(H)		A	B	C	D	1 TRANSITION LEVEL: - FL060 when QNH is 1013 hPa (760mm mercury column) or above; - FL070 when QNH is 977 hPa (733mm mercury column) or above, but less than 1013 hPa (760mm mercury column); - FL080 when QNH is less than 977 hPa (733mm mercury column). Radius of visual manoeuvring areas: CAT A - 3100m, CAT B - 4830m, CAT C - 7660m, CAT D - 12590m.
Straight-in Approach	CAT I	524' (223') (68)	536' (235') (72)	544' (243') (75)	555' (254') (78)	
	Circling	840' (540') (165)	840' (540') (165)	1010' (710') (220)	1900' (1600') (490)	

GROUND SPEED	km/h	150	180	210	240	270	300	330	360	390	420	450
	kt	81	97	113	130	146	162	178	194	211	227	243
RATE OF DESCENT	m/s	2.2	2.6	3.1	3.5	3.9	4.4	4.8	5.2	5.6	6.1	6.5
	ft/min	433	512	610	689	768	866	945	1024	1102	1201	1280

CHANGE: New chart