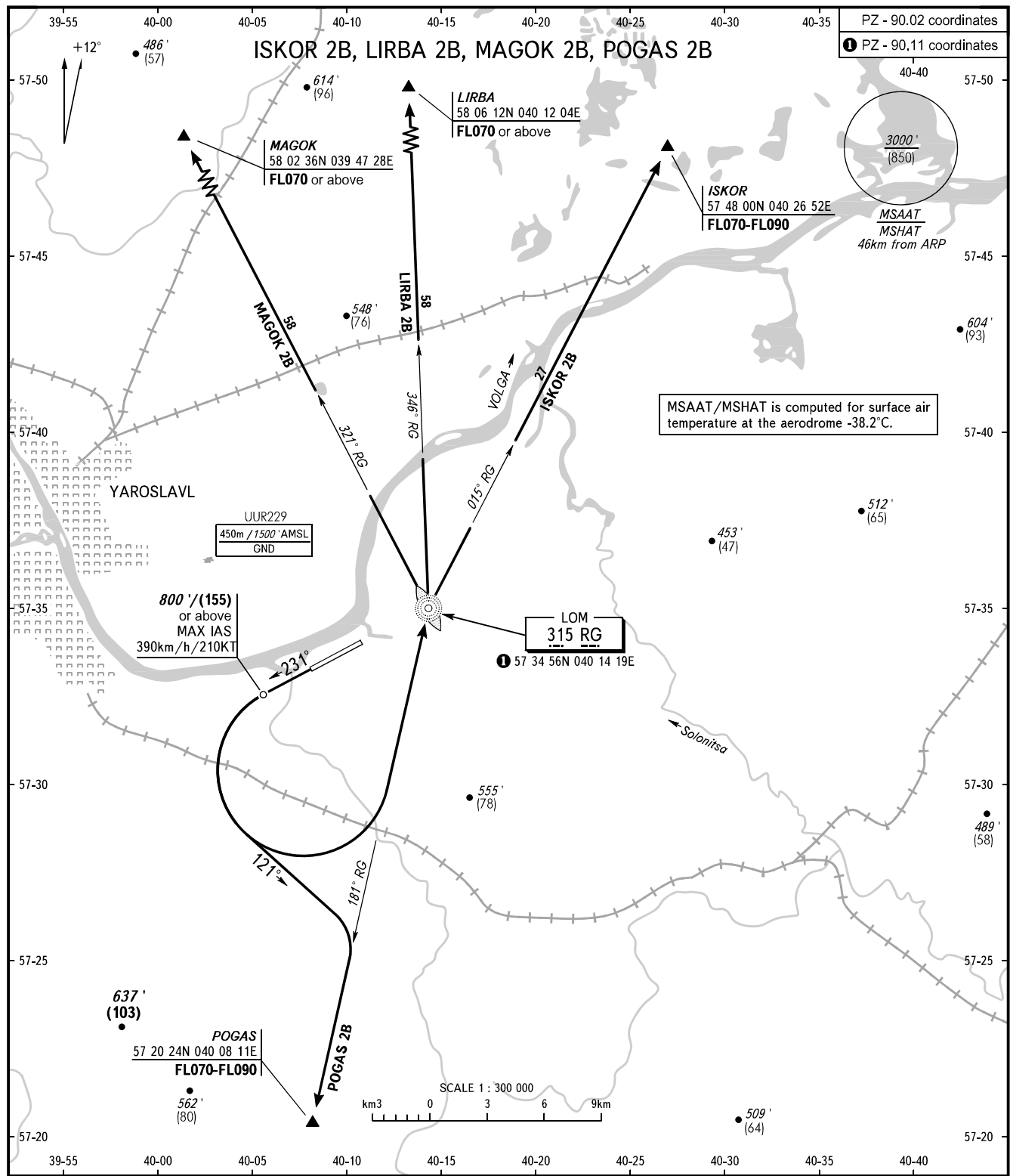


STANDARD DEPARTURE CHART
INSTRUMENT (SID) - ICAO

TRANSITION ALT : 5000'
TRANSITION HGT : (1400)

YAROSLAVL, RUSSIA
TUNOSHNA
RWY 23



TOWER 120.300

BEARINGS AND TRACKS ARE MAGNETIC
ALTITUDES IN FEET
HEIGHTS IN METRES
ELEVATIONS IN FEET AND METRES
DISTANCES IN KILOMETRES

Alt set: -QNH(QFE on req);
-hPa(mm on req).

WARNING:

1. Turn before DER is PROHIBITED for ISKOR 2B, LIRBA 2B, MAGOK 2B.
2. The minimum climb gradient required due to the airspace structure - 7.1% up to FL070 for POGAS 2B.

AIRAC AMDT 13/23

Federal Air Transport Agency

CHANGE: New chart