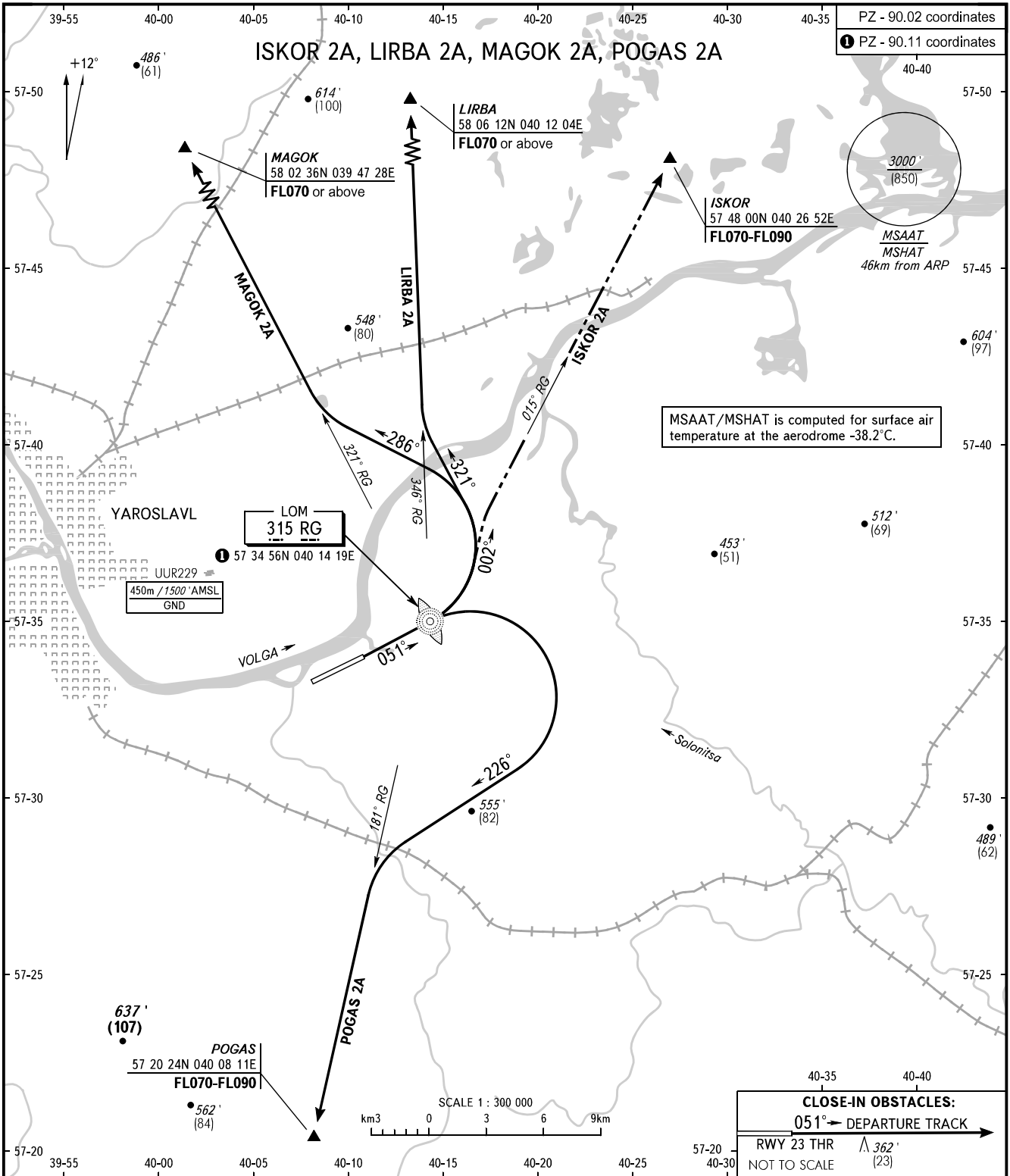


STANDARD DEPARTURE CHART
INSTRUMENT (SID) - ICAO

TRANSITION ALT : 5000'
TRANSITION HGT : (1400)

YAROSLAVL, RUSSIA
TUNOSHNA
RWY 05



TOWER	120.300
<p>WARNING:</p> <ol style="list-style-type: none"> Turn before passing LOM RG is PROHIBITED. The minimum climb gradient required due to the airspace structure is 6.4% up to FL070 for ISKOR 2A. MAGOK 2A, LIRBA 2A - MAX IAS 410km/h/220KT, POGAS 2A - MAX IAS 390km/h/210KT. 	
<p>BEARINGS AND TRACKS ARE MAGNETIC ALTITUDES IN FEET HEIGHTS IN METRES ELEVATIONS IN FEET AND METRES DISTANCES IN KILOMETRES</p>	<p>Alt set: -QNH(QFE on req); -hPa(mm on req).</p>

CHANGE: New chart