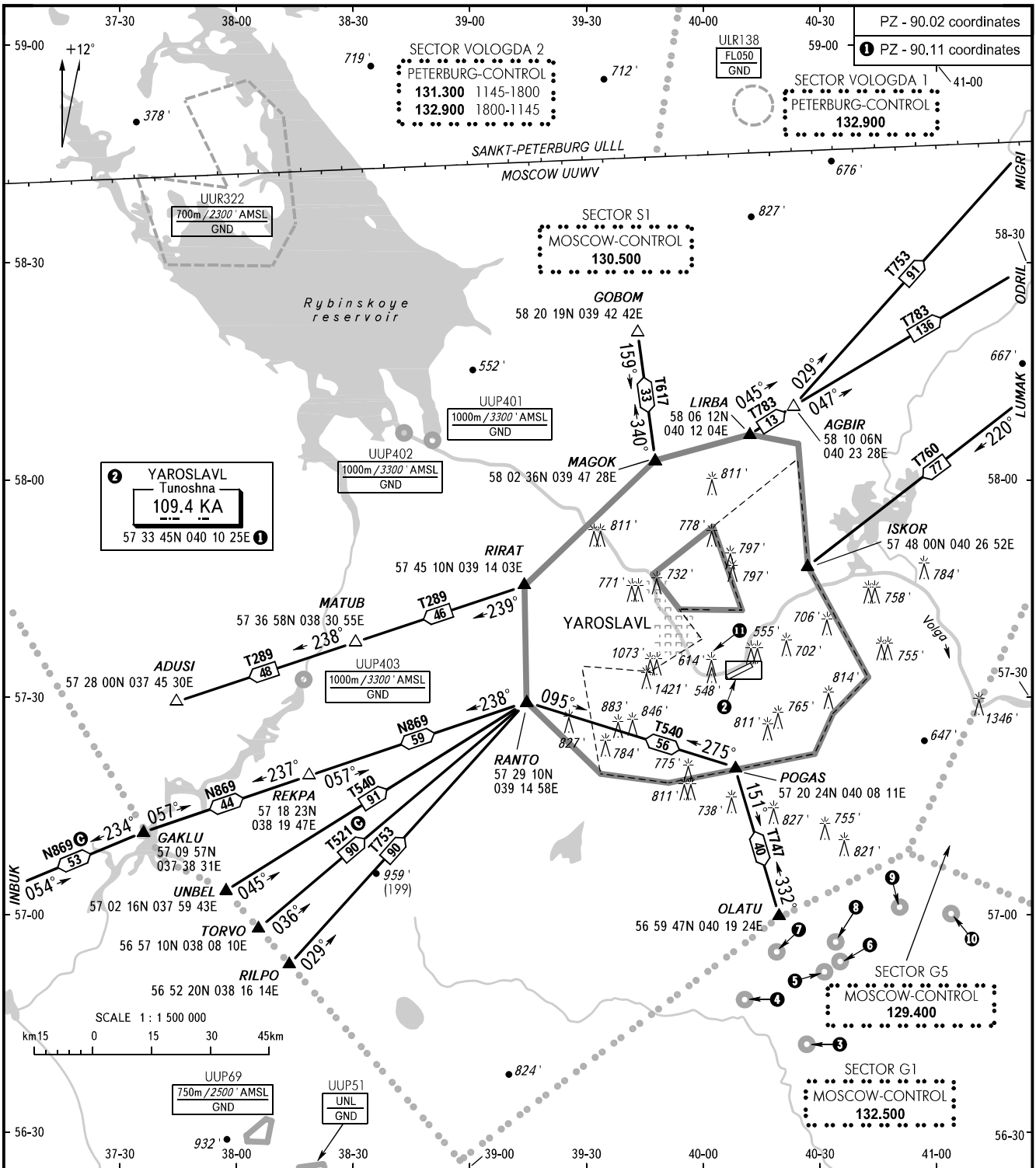


AREA CHART - ICAO

ARRIVAL, DEPARTURE
AND TRANSIT ROUTES

YAROSLAVL, RUSSIA

TUNOSHNA



② YAROSLAVL
Tunoshna
109.4 KA
57 33 45N 040 10 25E ①

SCALE 1 : 1 500 000
km 15 0 15 30 45km

TOWER 120.300

- | | | |
|-------------------------------------|-------------------------------------|-------------------------------------|
| ⑤ UUP411
1700m/5500' AMSL
GND | ④ UUP413
1700m/5500' AMSL
GND | ⑤ UUP414
1700m/5500' AMSL
GND |
| ⑥ UUP415
1700m/5500' AMSL
GND | ⑦ UUP412
1700m/5500' AMSL
GND | ⑧ UUP77
600m/1900' AMSL
GND |
| ⑨ UUP416
700m/2300' AMSL
GND | ⑩ UUP81
650m/2200' AMSL
GND | ⑪ UUR229
450m/1500' AMSL
GND |

BEARINGS AND TRACKS ARE MAGNETIC
ALTITUDES IN FEET AND METRES
ELEVATIONS IN FEET AND METRES
HEIGHTS IN METRES
DISTANCES IN KILOMETRES

Alt set: -QNH(QFE on req);
-hPa(mm on req).

CHANGE: Areas