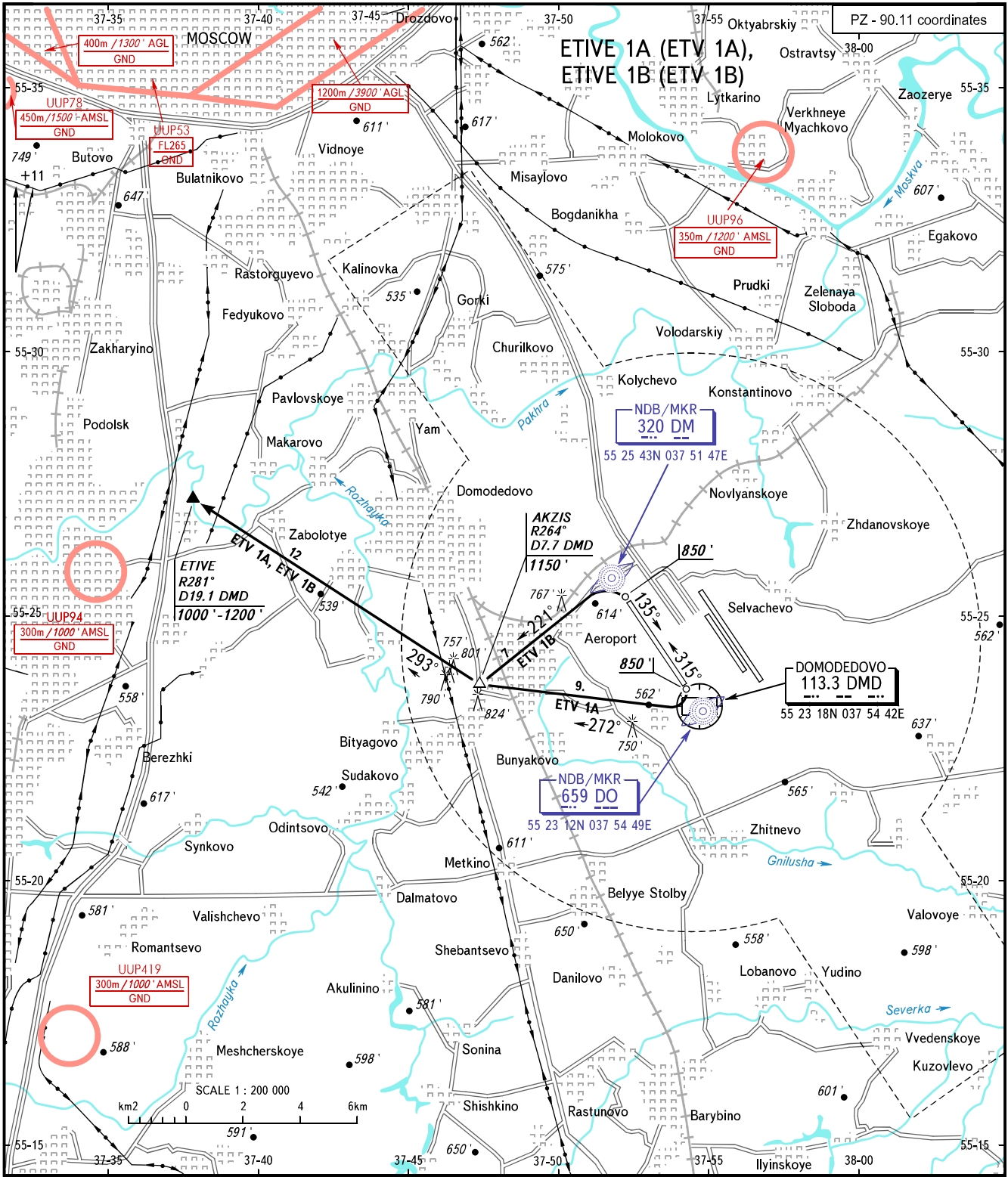


VFR DEPARTURE CHART

MOSCOW, RUSSIA
 DOMODEDOVO
 RWY 14R/32L

TRANSITION
 ALTITUDE: 10000'



DOMODEDOVO TOWER 118.600

BEARINGS AND TRACKS ARE MAGNETIC
 ALTITUDES AND ELEVATIONS IN FEET
 DISTANCES IN KILOMETRES

Alt set: -QNH(QFE on req);
 -hPa(mm on req).

CHANGE: UUP419, Heading