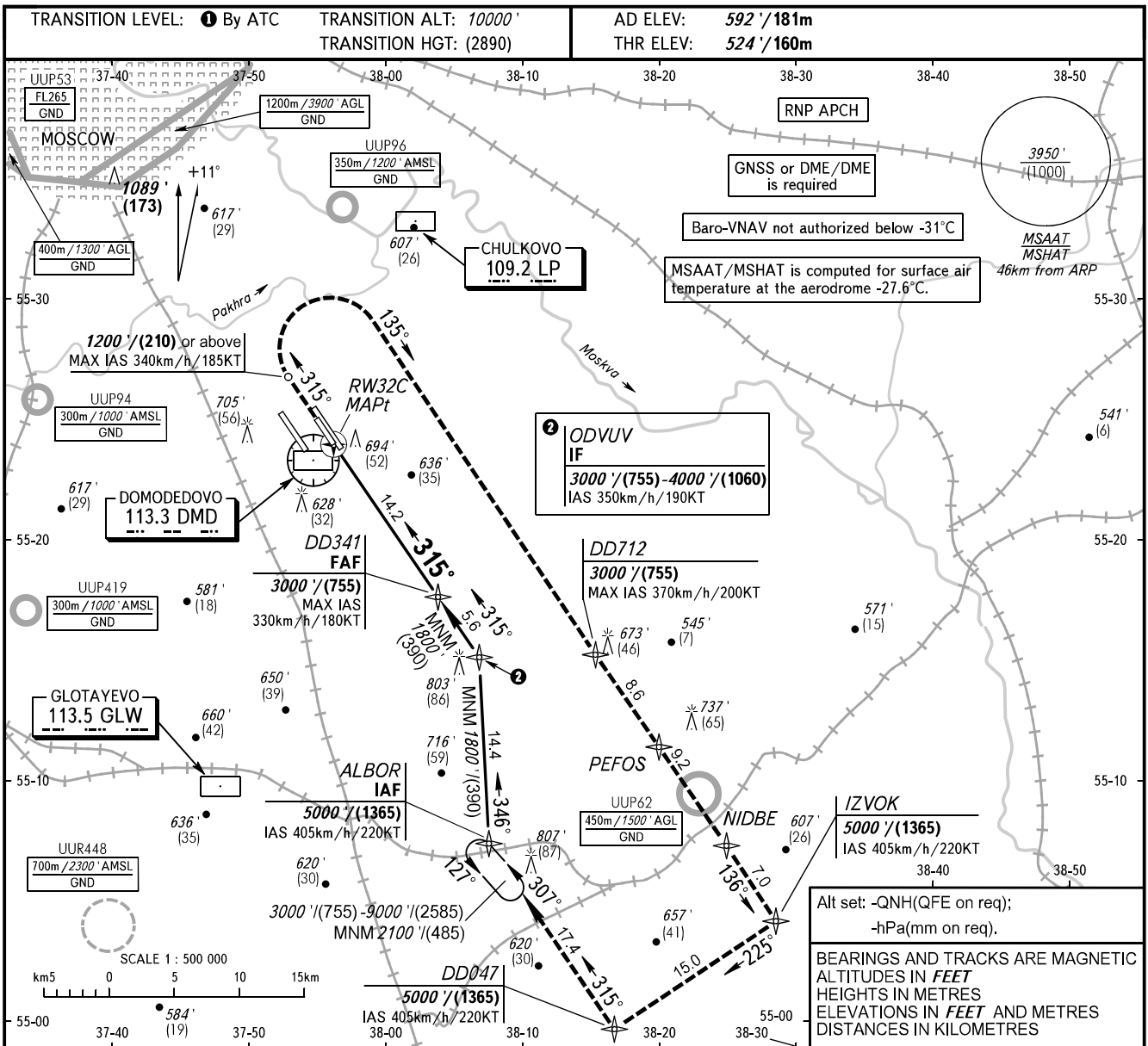


**INSTRUMENT
APPROACH
CHART - ICAO**

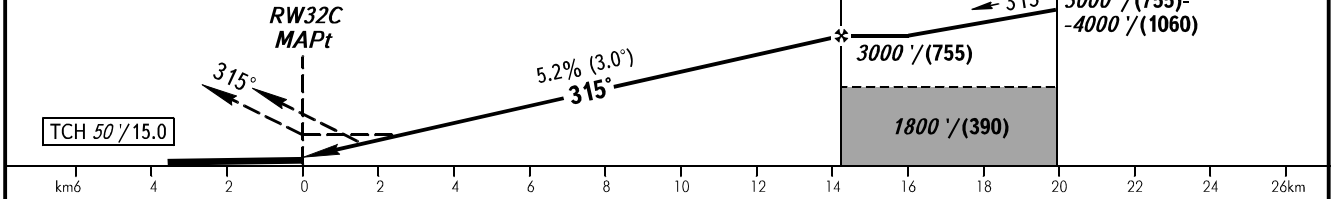
RADAR	125.300	129.800	127.700
TOWER	14R/32L	118.600	
	14L/32R, 14C/32C	119.700	

**MOSCOW, RUSSIA
DOMODEDOVO
RNP RWY 32C**



DIST to RW32C	2.0	4.0	6.0	8.0	10.0	12.0	14.2
ALTITUDE/HEIGHT	920' / (125)	1260' / (225)	1600' / (330)	1950' / (435)	2290' / (540)	2630' / (645)	3000' / (755)

MISSED APPROACH
Climb on track 315° to 1200' / (210) or above, turn RIGHT to DD712 climbing to 3000' / (755), then proceed to PEFOS - NIDBE - IZVOK climbing to 5000' / (1365) - DD047 climbing to 5000' / (1365) - ALBOR climbing to 5000' / (1365).



OCA(H)		A	B	C	D	① TRANSITION LEVEL:											
Straight-in	LNAV	910' (386') (118)	910' (386') (118)	910' (386') (118)	910' (386') (118)	- FL110 when QNH is 1013 hPa (760mm mercury column) or above;											
	LNAV/VNAV	824' (300') (92)	837' (313') (96)	845' (321') (98)	855' (331') (101)	- FL120 when QNH is 977 hPa (733mm mercury column) or above, but less than 1013 hPa (760mm mercury column);											
GROUND SPEED		km/h	150	180	210	240	270	300	330	360	390	420	450				
RATE OF DESCENT		m/s	2.2	2.6	3.0	3.5	3.9	4.3	4.8	5.2	5.6	6.1	6.5				
		ft/min	427	512	597	683	768	853	939	1024	1109	1195	1280				

CHANGE: New chart