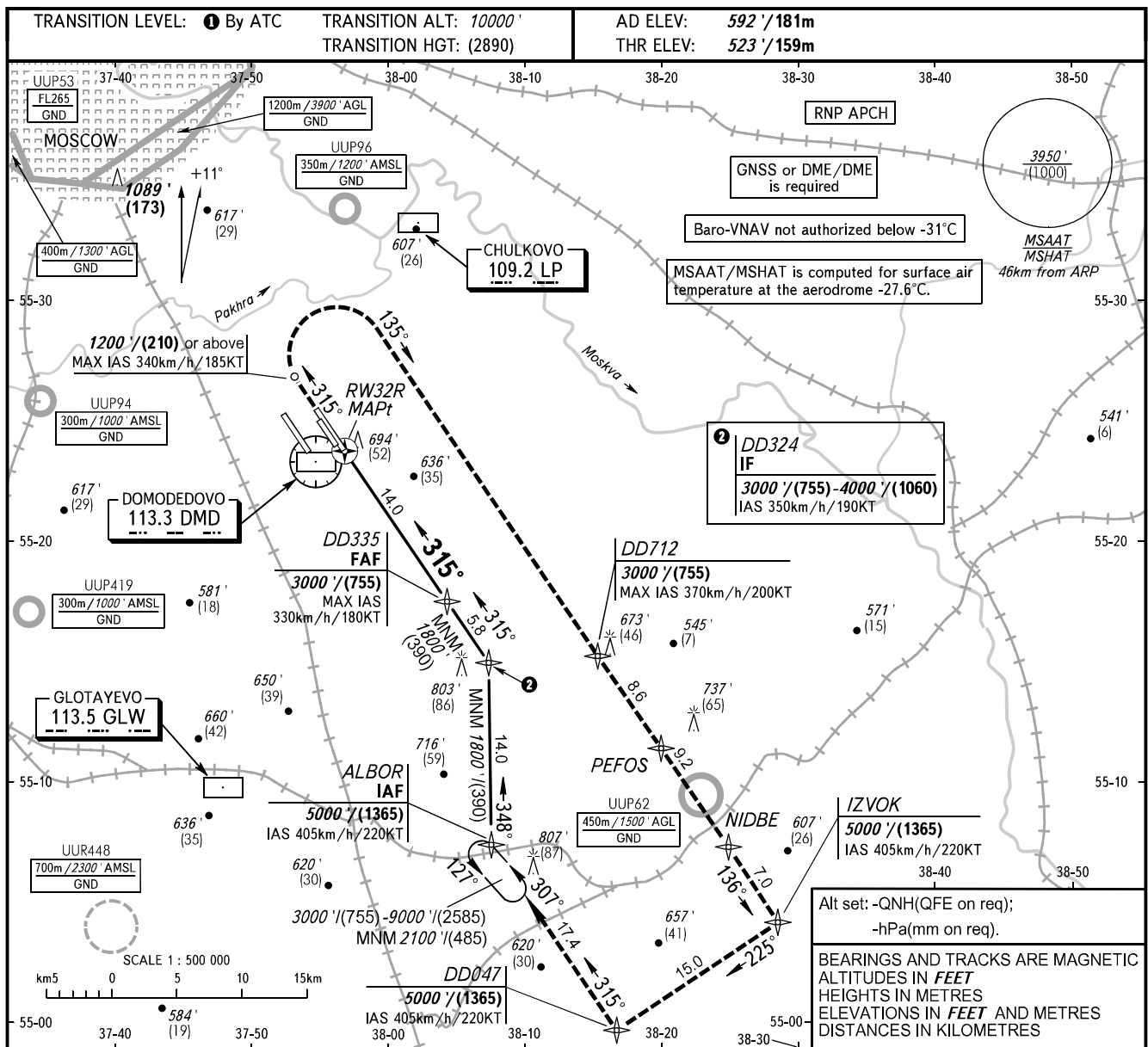


**INSTRUMENT
APPROACH
CHART - ICAO**

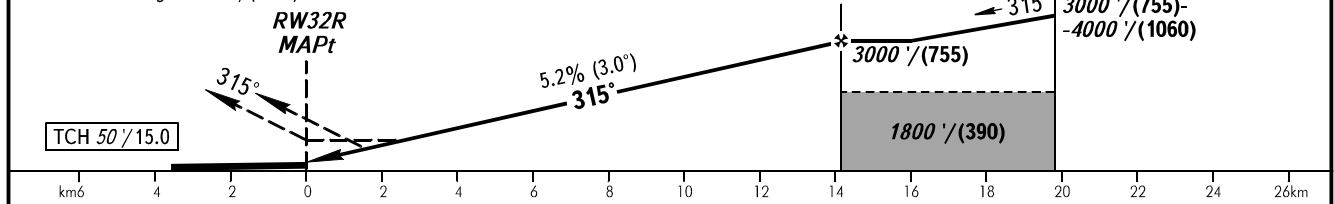
RADAR	125.300	129.800	127.700
	134.675	132.050	
TOWER	14R/32L	118.600	
	14L/32R	119.700	

MOSCOW, RUSSIA
DOMODEDOVO
RNP RWY 32R



DIST to RW32R	2.0	4.0	6.0	8.0	10.0	12.0	14.2
ALTITUDE/HEIGHT	920'/(120)	1270'/(225)	1610'/(330)	1950'/(435)	2300'/(540)	2640'/(645)	3000'/(755)

MISSED APPROACH
Climb on track 315° to 1200'/(210) or above, turn RIGHT to DD712 climbing to 3000'/(755), then proceed to PEFOS - NIDBE - IZVOK - climbing to 5000'/(1365) - DD047 climbing to 5000'/(1365) - ALBOR climbing to 5000'/(1365).



OCA(H)		A	B	C	D	① TRANSITION LEVEL:							
Straight-in	LNAV	920' (400') (125)	920' (400') (125)	920' (400') (125)	920' (400') (125)	- FL110 when QNH is 1013 hPa (760mm mercury column) or above;							
	LNAV/VNAV	810' (287') (88)	821' (298') (91)	828' (305') (93)	837' (314') (96)	- FL120 when QNH is 977 hPa (733mm mercury column) or above, but less than 1013 hPa (760mm mercury column);							
GROUND SPEED		km/h	150	180	210	240	270	300	330	360	390	420	450
RATE OF DESCENT		m/s	2.2	2.6	3.0	3.5	3.9	4.3	4.8	5.2	5.6	6.1	6.5
		ft/min	427	512	597	683	768	853	939	1024	1109	1195	1280