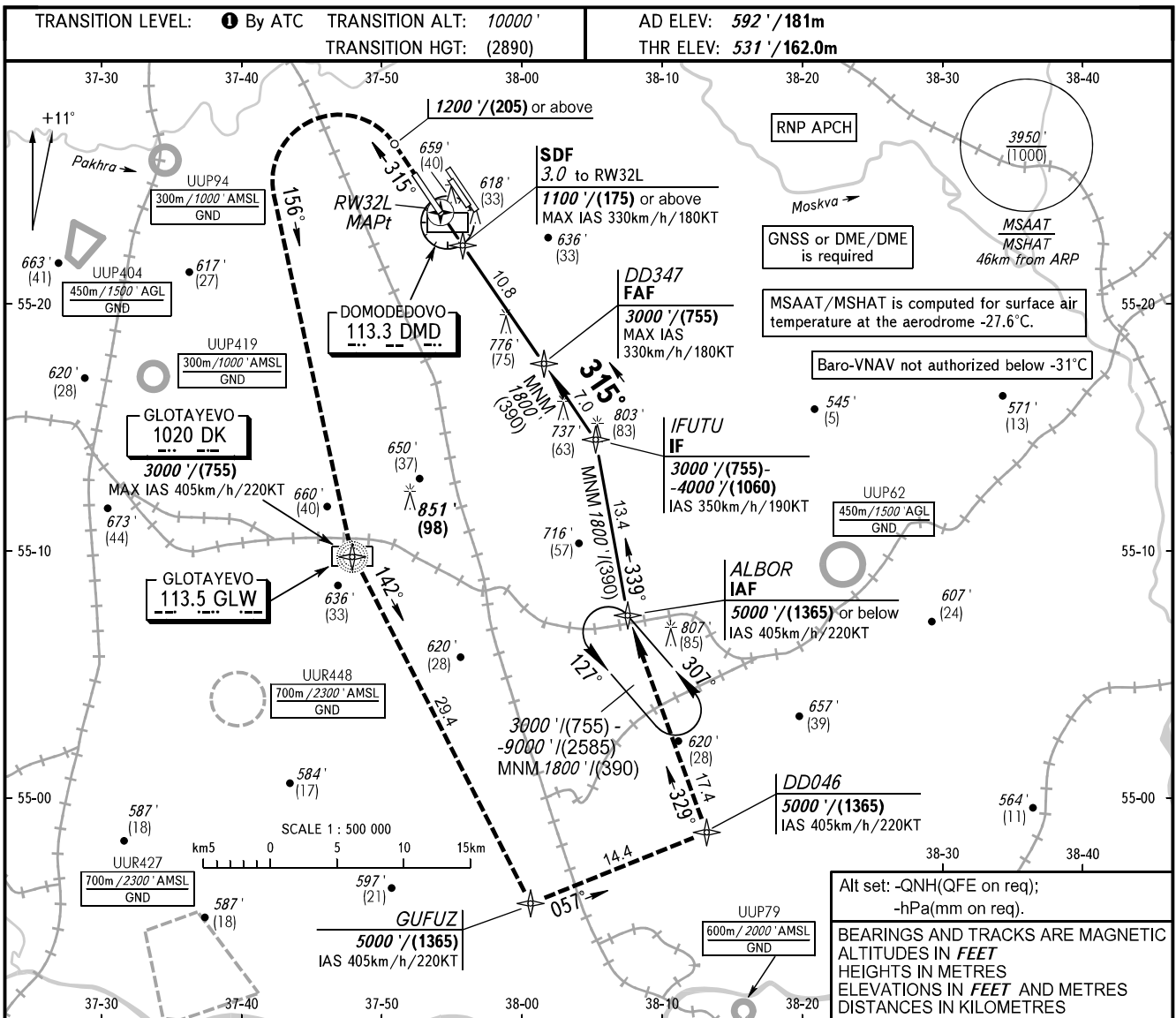


**INSTRUMENT  
APPROACH  
CHART - ICAO**

RADAR	125.300	127.700
	129.800	132.050
	134.675	
TOWER 14R/32L	118.600	
14L/32R	119.700	

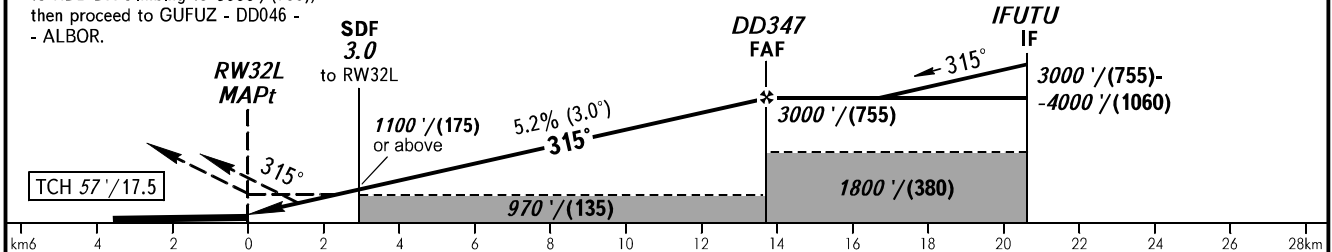
**MOSCOW, RUSSIA**  
**DOMODEDOVO**  
**RNP RWY 32L**



**MISSED APPROACH**

Climb on track 315° to 1200'/(205) or above, turn LEFT onto track 156° to NDB DK climbing to 3000'/(755), then proceed to GUFUZ - DD046 - ALBOR.

DIST to RW32L	2.0	4.0	6.0	8.0	10.0	12.0	13.8
ALTITUDE/HEIGHT	920'/(120)	1260'/(225)	1600'/(330)	1950'/(435)	2290'/(540)	2630'/(640)	3000'/(755)



OCA(H)		A	B	C	D								
Straight-in	LNAV	890' (359') (110)	890' (359') (110)	890' (359') (110)	890' (359') (110)								
	LNAV/VNAV	792' (261') (80)	802' (271') (83)	810' (279') (86)	823' (292') (90)								
GROUND SPEED		km/h	150	180	210	240	270	300	330	360	390	420	450
RATE OF DESCENT		m/s	2.2	2.6	3.0	3.5	3.9	4.3	4.8	5.2	5.6	6.1	6.5
		ft/min	427	512	597	683	768	853	939	1024	1109	1195	1280

**TRANSITION LEVEL:**  
 - FL110 when QNH is 1013 hPa (760mm mercury column) or above;  
 - FL120 when QNH is 977 hPa (733mm mercury column) or above, but less than 1013 hPa (760mm mercury column);  
 - FL130 when QNH is less than 977 hPa (733mm mercury column).

CHANGE: DISTANCES