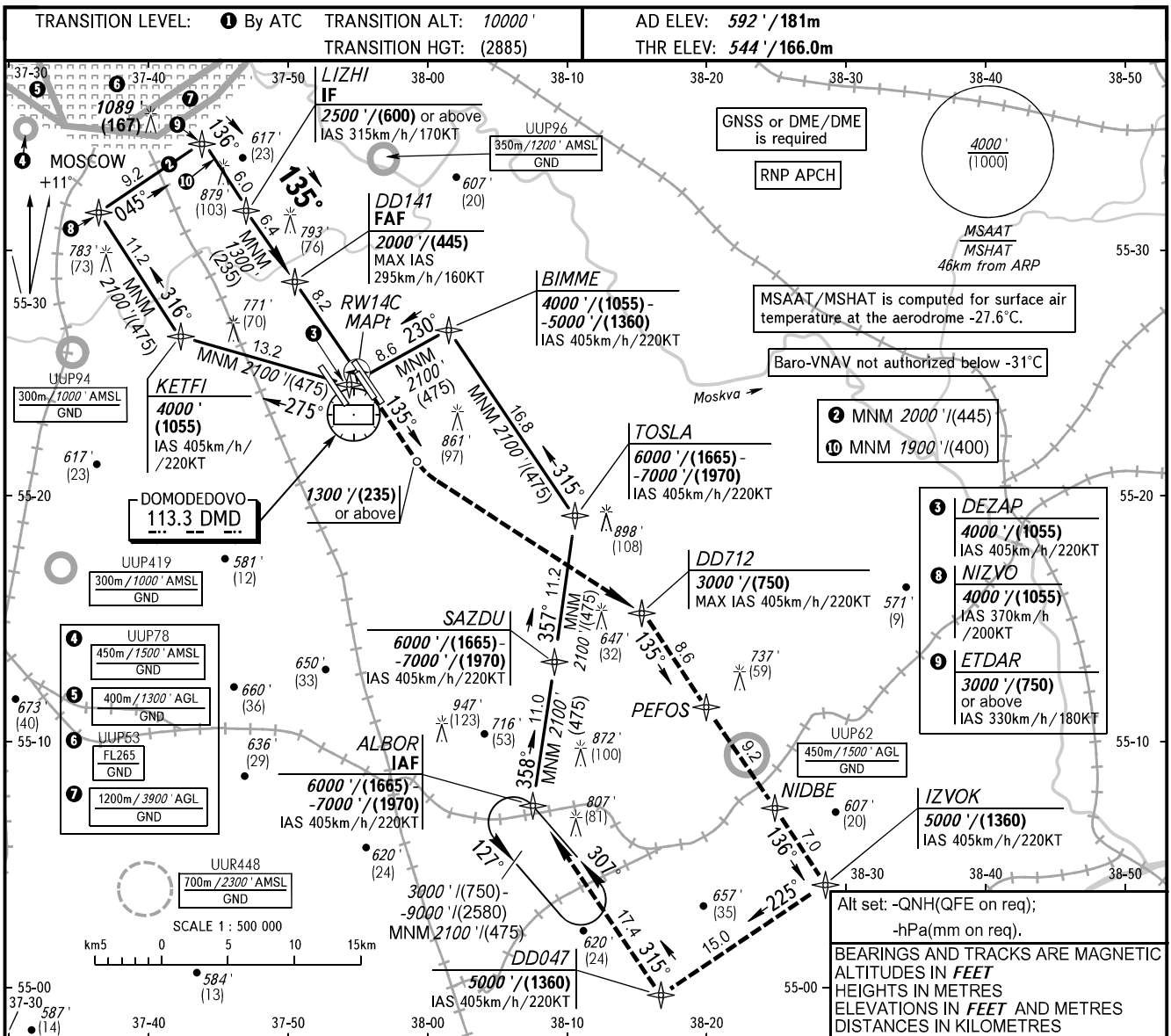


**INSTRUMENT  
APPROACH  
CHART - ICAO**

RADAR	125.300	127.700
	129.800	132.050
	134.675	
TOWER 14R/32L	118.600	
14L/32R, 14C/32C	119.700	

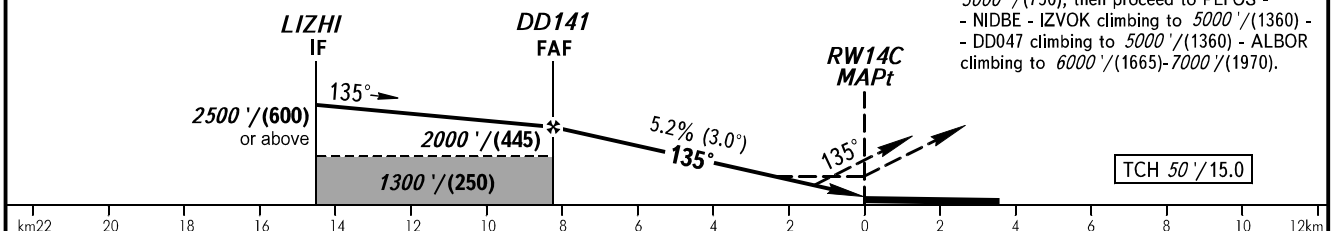
**MOSCOW, RUSSIA  
DOMODEDOVO  
RNP Z RWY 14C**



DIST to RW14C	8.2	6.0	4.0	2.0
ALTITUDE/HEIGHT	2000' / (445)	1620' / (330)	1280' / (225)	940' / (125)

**MISSED APPROACH**

Climb on track 135° to 1300' / (235) or above, turn LEFT to DD712 climbing to 3000' / (750), then proceed to PEFOSS - NIDBE - IZVOK climbing to 5000' / (1360) - DD047 climbing to 5000' / (1360) - ALBOR climbing to 6000' / (1665) - 7000' / (1970).



OCA(H)		A	B	C	D								
Straight-in	<b>LNAV</b>	1000' (456') (142)	1000' (456') (142)	1000' (456') (142)	1000' (456') (142)								
	<b>LNAV/VNAV</b>	864' (320') (98)	877' (333') (102)	885' (341') (104)	895' (351') (107)								
GROUND SPEED		km/h	150	180	210	240	270	300	330	360	390	420	450
RATE OF DESCENT		m/s	2.2	2.6	3.0	3.5	3.9	4.3	4.8	5.2	5.6	6.1	6.5
		ft/min	427	512	597	683	768	853	939	1024	1109	1195	1280

**1** TRANSITION LEVEL:  
 - FL110 when QNH is 1013 hPa (760mm mercury column) or above;  
 - FL120 when QNH is 977 hPa (733mm mercury column) or above, but less than 1013 hPa (760mm mercury column);  
 - FL130 when QNH is less than 977 hPa (733mm mercury column).

CHANGE: New chart