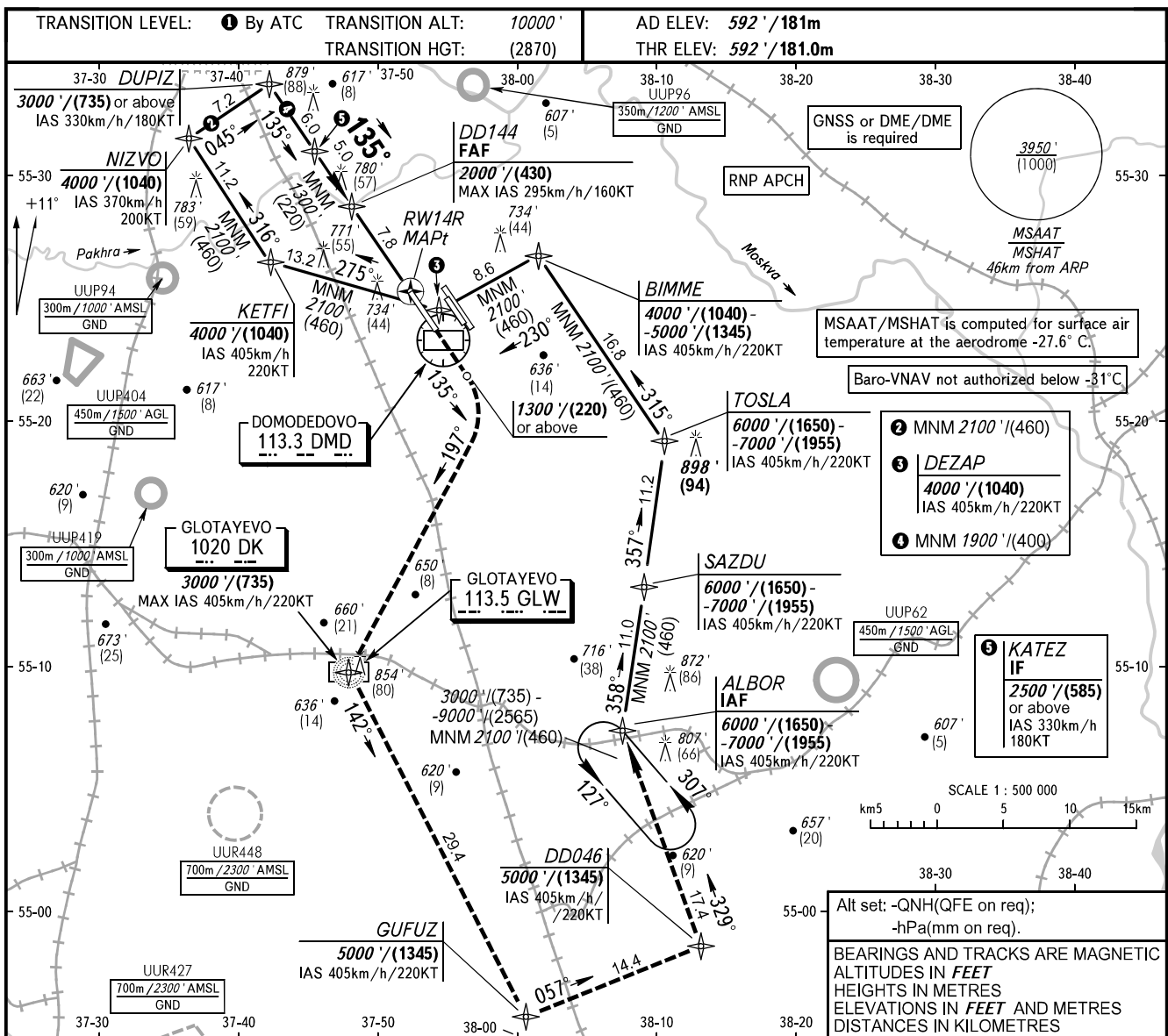


**INSTRUMENT
APPROACH
CHART - ICAO**

MOSCOW, RUSSIA
DOMODEDOVO
RNP Z RWY 14R

RADAR	125.300	127.700
	129.800	132.050
	134.675	
TOWER 14R/32L	118.600	
	14L/32R	119.700

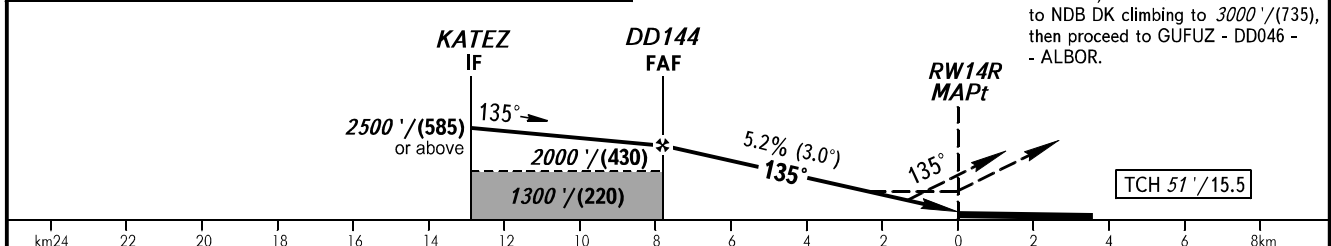


DIST to RW14R	7.8	6.0	4.0	2.0
ALTITUDE/HEIGHT	2000'/(430)	1670'/(329)	1330'/(225)	980'/(119)

Alt set: -QNH(QFE on req);
-hPa(mm on req).

BEARINGS AND TRACKS ARE MAGNETIC
ALTITUDES IN FEET
HEIGHTS IN METRES
ELEVATIONS IN FEET AND METRES
DISTANCES IN KILOMETRES

MISSED APPROACH
Climb on track 135° to 1300'/(220) or above, turn RIGHT onto track 197° to NDB DK climbing to 3000'/(735), then proceed to GUFUZ - DD046 - ALBOR.



OCA(H)		A	B	C	D								
Straight-in	LNAV	960' (368') (113)	960' (368') (113)	960' (368') (113)	960' (368') (113)								
	LNAV/VNAV	861' (269') (82)	874' (282') (86)	882' (290') (89)	892' (300') (92)								
GROUND SPEED		km/h	150	180	210	240	270	300	330	360	390	420	450
RATE OF DESCENT		m/s	2.2	2.6	3.0	3.5	3.9	4.3	4.8	5.2	5.6	6.1	6.5
		ft/min	427	512	597	683	768	853	939	1024	1109	1195	1280

1 TRANSITION LEVEL:
- FL110 when QNH is 1013 hPa (760mm mercury column) or above;
- FL120 when QNH is 977 hPa (733mm mercury column) or above, but less than 1013 hPa (760mm mercury column);
- FL130 when QNH is less than 977 hPa (733mm mercury column).

CHANGE: DISTANCES