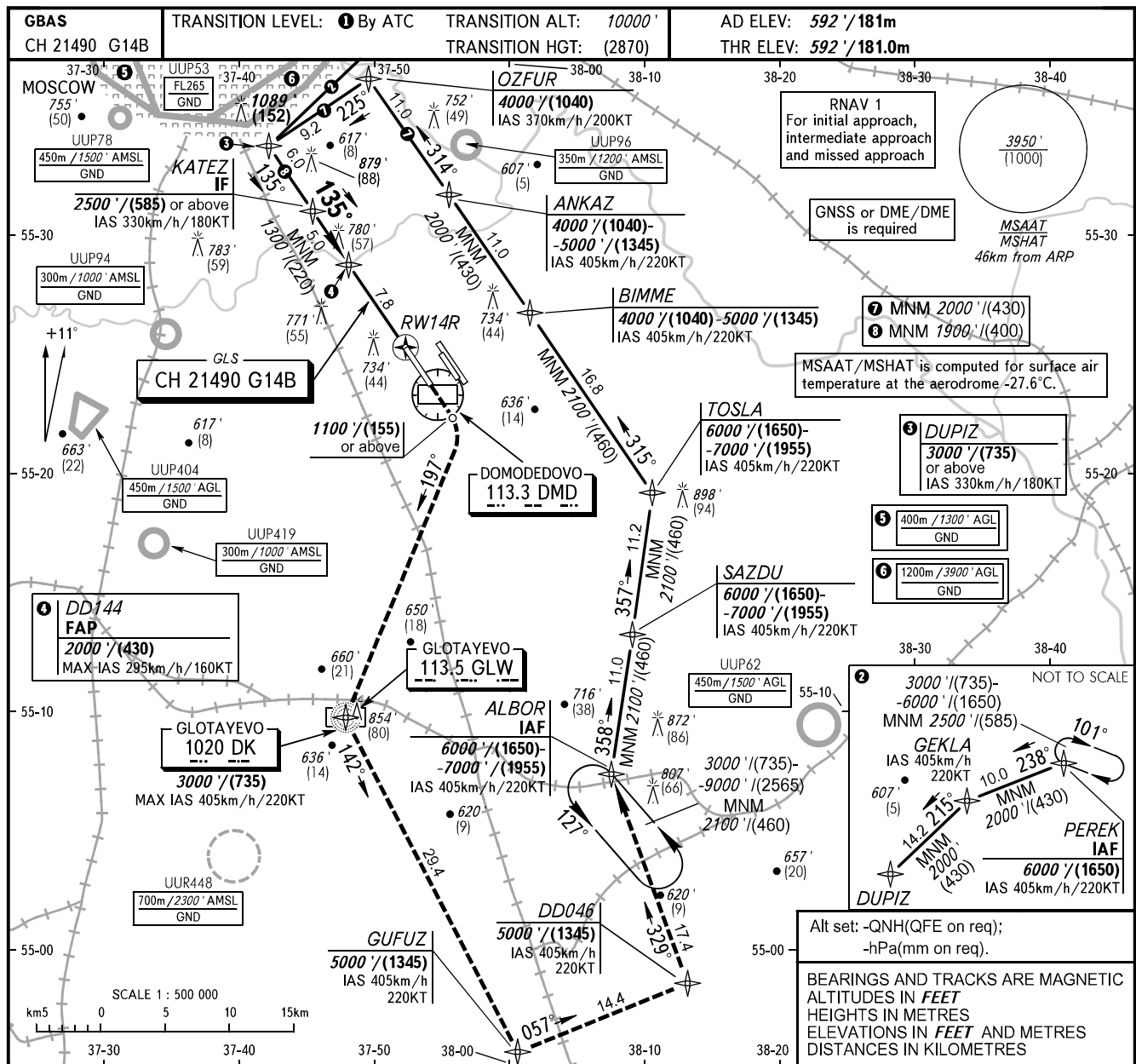


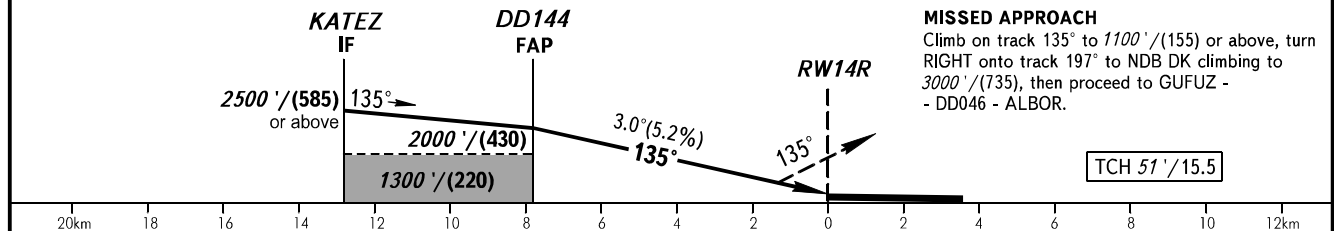
**INSTRUMENT  
APPROACH  
CHART - ICAO**

RADAR	125.300	129.800	127.700
	134.675	132.050	
TOWER	14R/32L	118.600	
	14L/32R	119.700	

**MOSCOW, RUSSIA**  
**DOMODEDOVO**  
**GLS Y RWY 14R**



DIST to RW14R	7.8	6.0	4.0	2.0
ALTITUDE/HEIGHT	2000' / (430)	1670' / (329)	1330' / (225)	980' / (119)



OCA(H)					<b>TRANSITION LEVEL:</b> - FL110 when QNH is 1013 hPa (760mm mercury column) or above; - FL120 when QNH is 977 hPa (733mm mercury column) or above, but less than 1013 hPa (760mm mercury column); - FL130 when QNH is less than 977 hPa (733mm mercury column).										
Straight-in Approach	CAT I	A	B	C	D	BEARINGS AND TRACKS ARE MAGNETIC ALTITUDES IN FEET HEIGHTS IN METRES ELEVATIONS IN FEET AND METRES DISTANCES IN KILOMETRES Alt set: -QNH(QFE on req); -hPa(mm on req).									
		792' (200') (60)	792' (200') (60)	792' (200') (60)	792' (200') (60)										
GROUND SPEED		km/h	150	180	210	240	270	300	330	360	390	420	450	CHANGE: DISTANCES	
RATE OF DESCENT		m/s	2.2	2.6	3.0	3.5	3.9	4.3	4.8	5.2	5.6	6.1	6.5		
		ft/min	427	512	597	683	768	853	939	1024	1109	1195	1280		