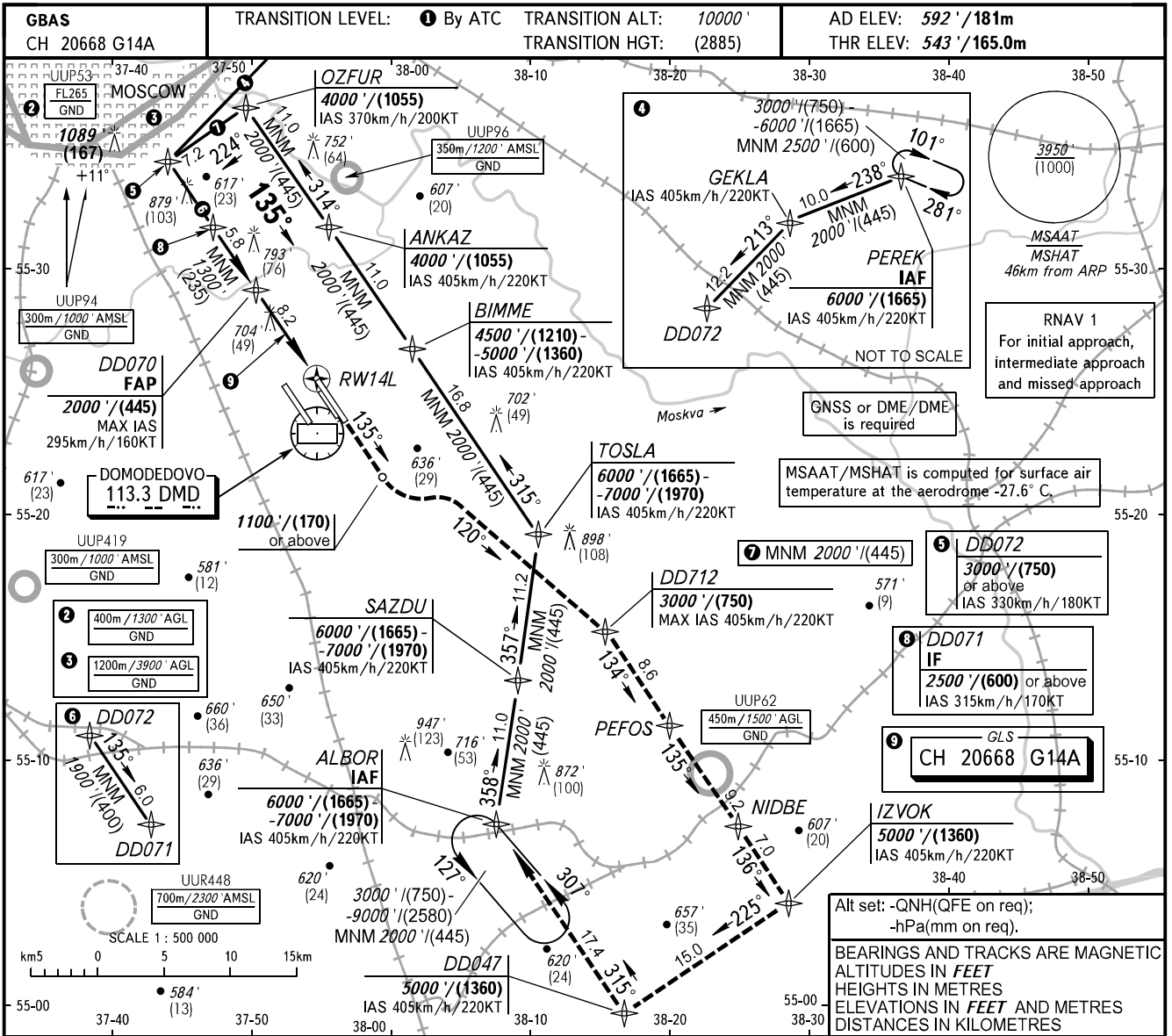


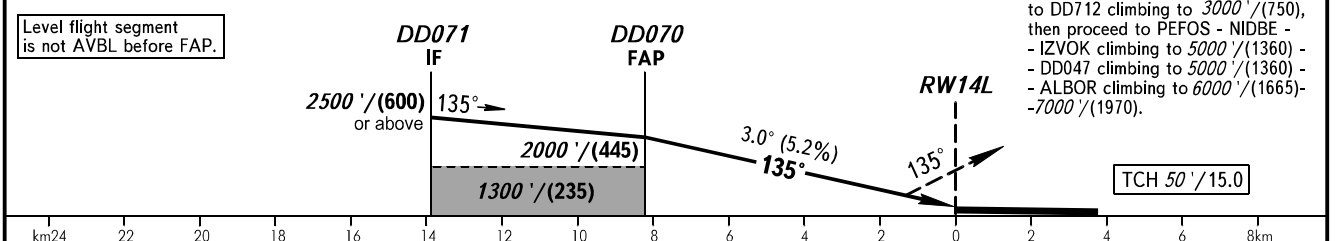
**INSTRUMENT
APPROACH
CHART - ICAO**

RADAR	125.300	127.700
	129.800	132.050
	134.675	
TOWER 14R/32L	118.600	
14L/32R	119.700	

MOSCOW, RUSSIA
DOMODEDOVO
GLS Y RWY 14L



DIST to RW14L	8.2	6.0	4.0	2.0
ALTITUDE/HEIGHT	2000' / (445)	1620' / (330)	1280' / (225)	940' / (120)



OCA(H)		A	B	C	D								
Straight-in	CAT I	755' (212')	768' (225')	776' (233')	786' (243')								
		(65)	(69)	(72)	(75)								
Approach													
Circling													
GROUND SPEED		km/h	150	180	210	240	270	300	330	360	390	420	450
RATE OF DESCENT		m/s	2.2	2.6	3.0	3.5	3.9	4.3	4.8	5.2	5.6	6.1	6.5
		ft/min	427	512	597	683	768	853	939	1024	1109	1195	1280

① TRANSITION LEVEL:

- FL110 when QNH is 1013 hPa (760mm mercury column) or above;
- FL120 when QNH is 977 hPa (733mm mercury column) or above, but less than 1013 hPa (760mm mercury column);
- FL130 when QNH is less than 977 hPa (733mm mercury column).

CHANGE: OZFUR, PEREK, TOSLA-BIMME