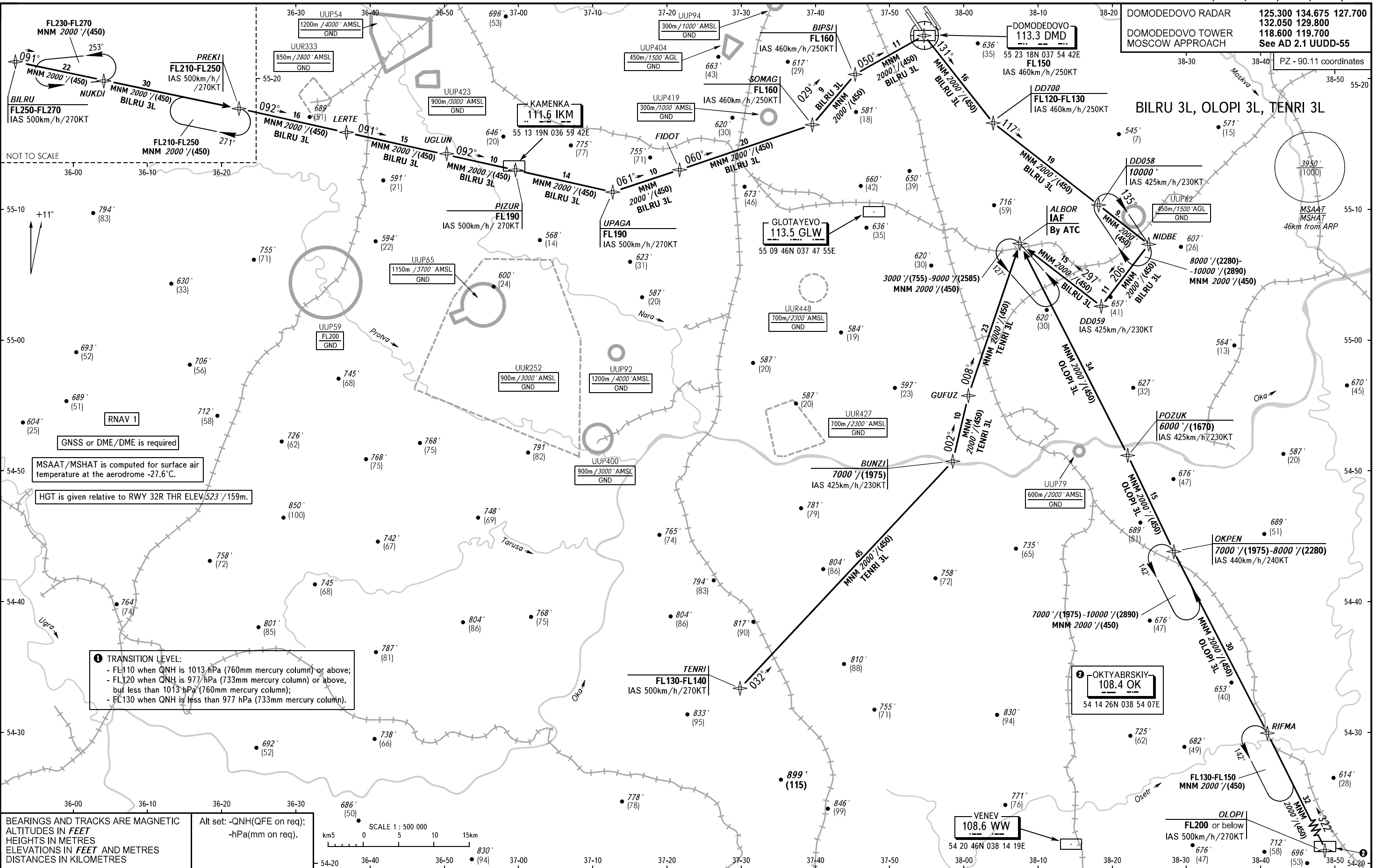


STANDARD ARRIVAL CHART
INSTRUMENT (STAR) - ICAO

MOSCOW, RUSSIA
DOMODEDOVO
RNAV RWY 14L/32R, 14C/32C, 14R/32L

TRANSITION
LEVEL: By ATC ①

DOMODEDOVO RADAR 125.300 134.675 127.700
DOMODEDOVO TOWER 132.050 129.800
MOSCOW APPROACH 118.600 119.700
See AD 2.1 UDD-55



NOT TO SCALE

+11°

RNAV 1

GNSS or DME/DME is required

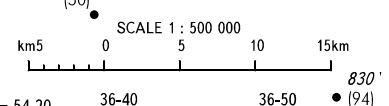
MSAAT/MSHAT is computed for surface air temperature at the aerodrome -27.6°C.

HGT is given relative to RWY 32R THR ELEV 523 / 159m.

① TRANSITION LEVEL:
- FL110 when QNH is 1013 hPa (760mm mercury column) or above;
- FL120 when QNH is 977 hPa (733mm mercury column) or above, but less than 1013 hPa (760mm mercury column);
- FL130 when QNH is less than 977 hPa (733mm mercury column).

BEARINGS AND TRACKS ARE MAGNETIC
ALTITUDES IN FEET
HEIGHTS IN METRES
ELEVATIONS IN FEET AND METRES
DISTANCES IN KILOMETRES

Alt set: -QNH(QFE on req);
-hPa(mm on req).



CHANGE: New chart