

DOMODEDOVO TOWER 118.600 119.700  
DOMODEDOVO RADAR 125.300 119.400 129.800  
VNUKOVO RADAR 123.400 135.900  
SHEREMETYEVO RADAR 118.100 122.700  
MOSCOW APPROACH See AD 2.1 UDD-55

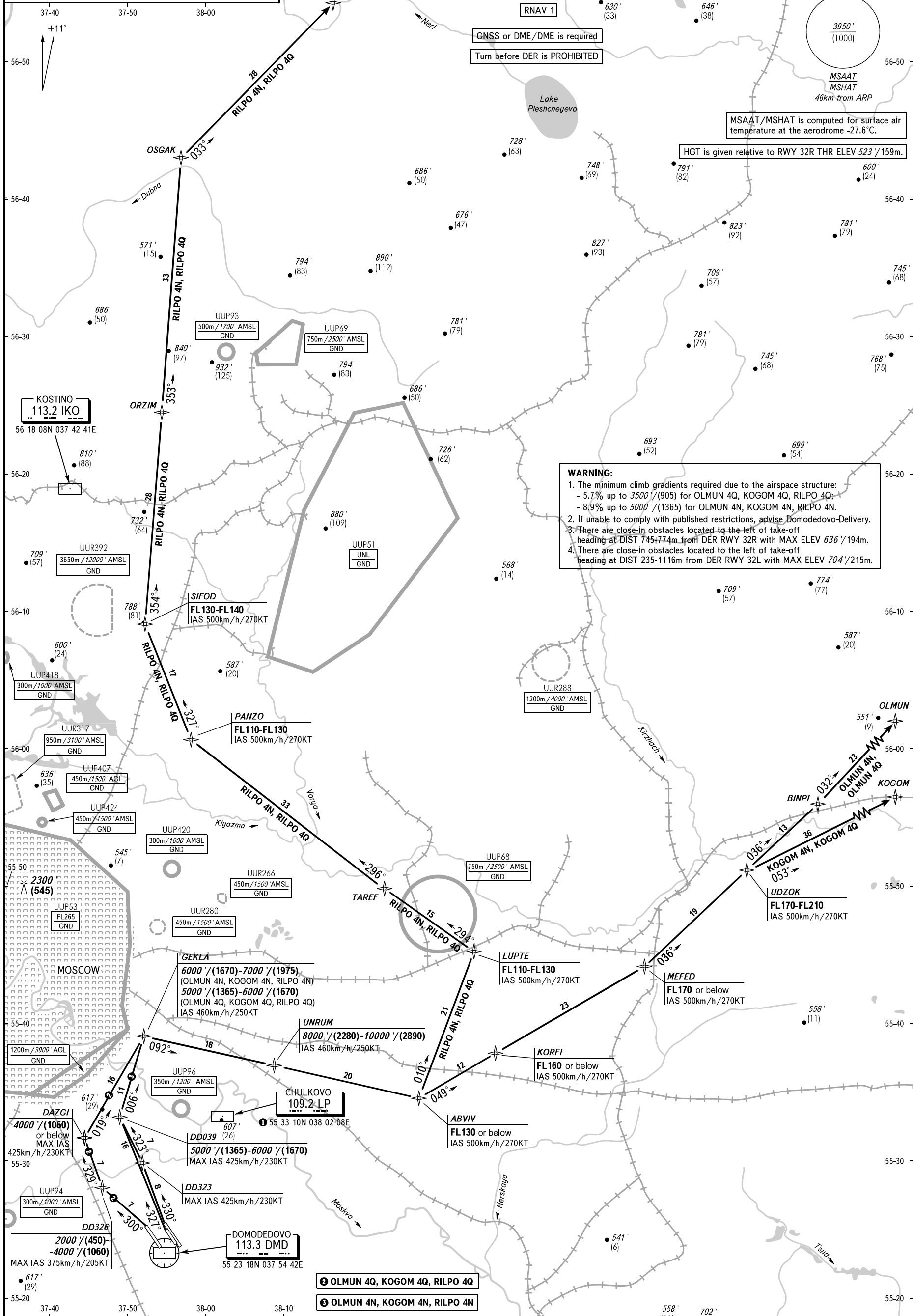
# KOGOM 4N, KOGOM 4Q, OLMUN 4N, OLMUN 4Q, RILPO 4N, RILPO 4Q

PZ - 90.02 coordinates  
PZ - 90.11 coordinates  
MSAAT/MSHAT  
46km from ARP  
MSAAT/MSHAT is computed for surface air temperature at the aerodrome -27.6°C.  
HGT is given relative to RWY 32R THR ELEV 523' / 159m.

AD 2.1 UDD-150  
01 DEC 22  
STANDARD DEPARTURE CHART  
INSTRUMENT (SID) - ICAO

TRANSITION ALT: 10000'  
TRANSITION HGT: (2890')

**WARNING:**  
1. The minimum climb gradients required due to the airspace structure:  
- 5.7% up to 3500' / (905) for OLMUN 4Q, KOGOM 4Q, RILPO 4Q;  
- 8.9% up to 5000' / (1365) for OLMUN 4N, KOGOM 4N, RILPO 4N.  
2. If unable to comply with published restrictions, advise Domodedovo-Delivery.  
3. There are close-in obstacles located to the left of take-off heading at DIST 745+774m from DER RWY 32R with MAX ELEV 636' / 194m.  
4. There are close-in obstacles located to the left of take-off heading at DIST 235-1116m from DER RWY 32L with MAX ELEV 704' / 215m.



BEARINGS AND TRACKS ARE MAGNETIC  
ALTITUDES IN FEET  
HEIGHTS IN METRES  
ELEVATIONS IN FEET AND METRES  
DISTANCES IN KILOMETRES

Alt set: -QNH(QFE on req);  
-hPa(mm on req).

② OLMUN 4Q, KOGOM 4Q, RILPO 4Q  
③ OLMUN 4N, KOGOM 4N, RILPO 4N

MOSCOW, RUSSIA  
DOMODEDOVO  
RNAV RWY 32L, 32C, 32R  
RUSSIA