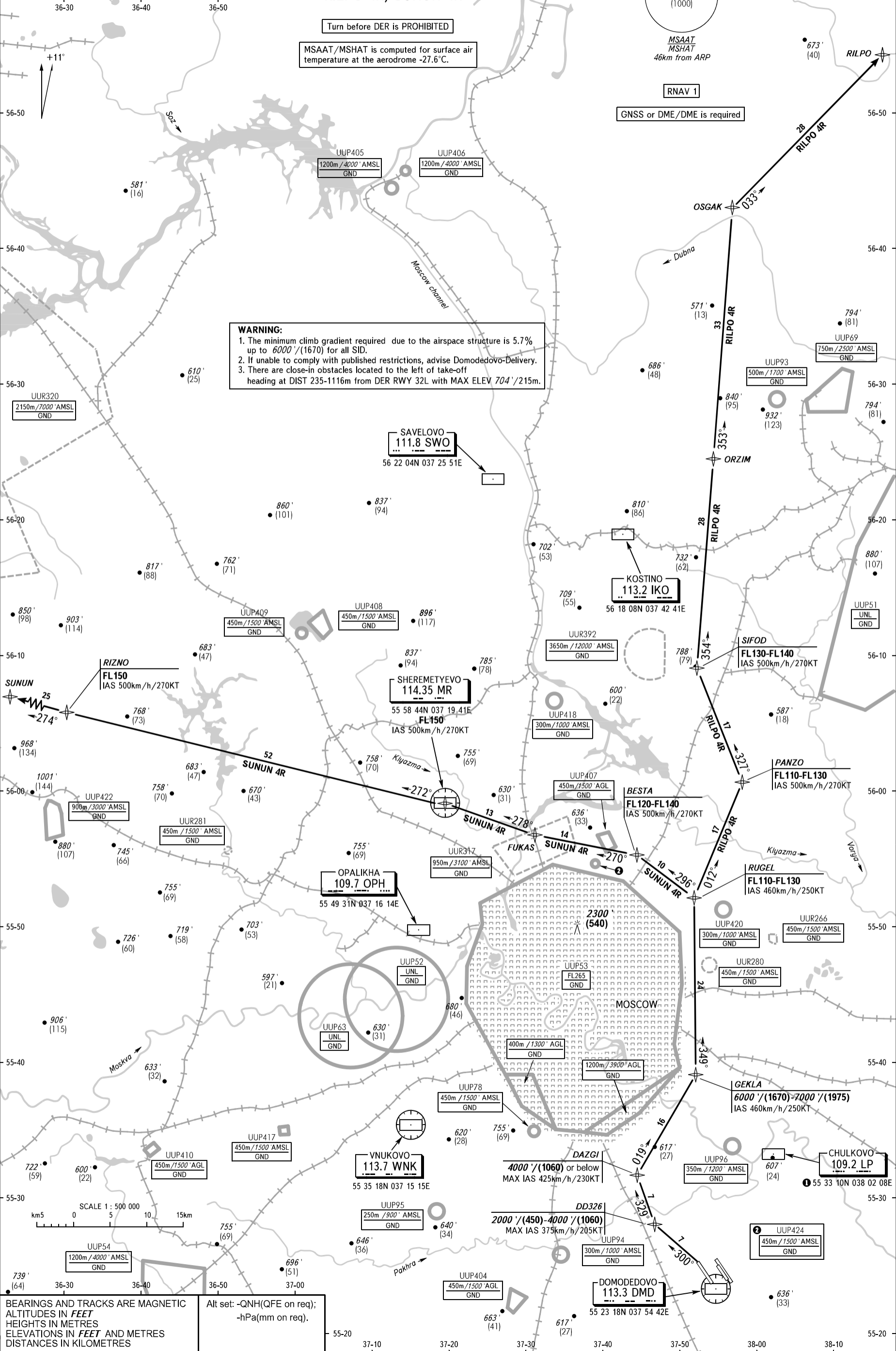


DOMODEDOVO TOWER	118.600	119.700
DOMODEDOVO RADAR	125.300	119.400 129.800
VNUKOVO RADAR	123.400	135.900
SHEREMETYEVO RADAR	118.100	122.700
MOSCOW APPROACH	See AD 2.1 UDD-55	

PZ - 90.11 coordinates	38-10	57-00
PZ - 90.02 coordinates	38-10	57-00



**WARNING:**

- The minimum climb gradient required due to the airspace structure is 5.7% up to 6000'/(1670) for all SID.
- If unable to comply with published restrictions, advise Domodedovo-Delivery.
- There are close-in obstacles located to the left of take-off heading at DIST 235-1116m from DER RWY 32L with MAX ELEV 704' / 215m.

BEARINGS AND TRACKS ARE MAGNETIC  
ALTITUDES IN FEET  
HEIGHTS IN METRES  
ELEVATIONS IN FEET AND METRES  
DISTANCES IN KILOMETRES

Alt set: -QNH(QFE on req);  
-hPa(mm on req).

CHANGE: New chart