

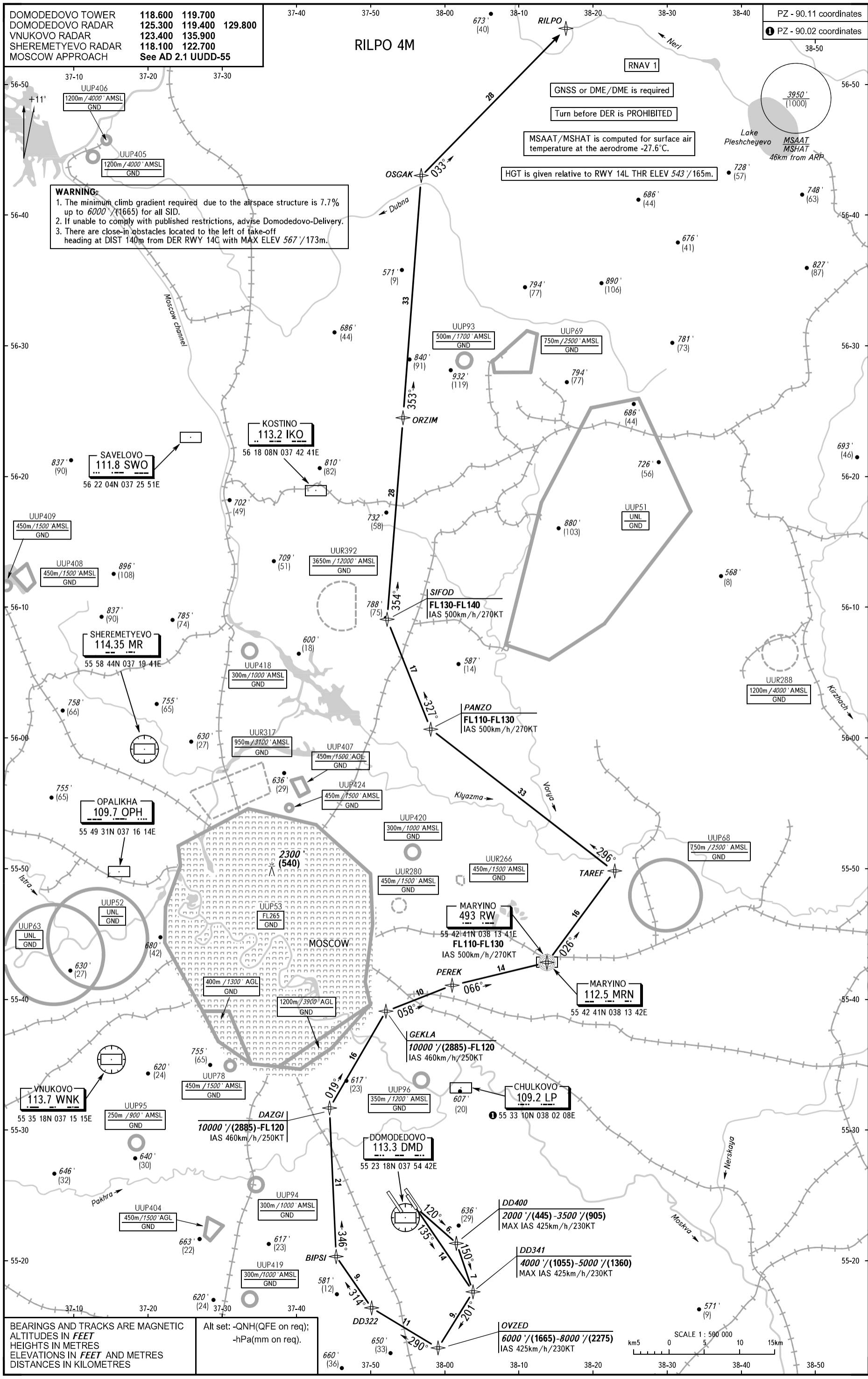
DOMODEDOVO TOWER	118.600	119.700
DOMODEDOVO RADAR	125.300	119.400 129.800
VNUKOVO RADAR	123.400	135.900
SHERMETYEVO RADAR	118.100	122.700
MOSCOW APPROACH	See AD 2.1 UDD-55	

# RILPO 4M

PZ - 90.11 coordinates  
 PZ - 90.02 coordinates

**WARNING:**

- The minimum climb gradient required due to the airspace structure is 7.7% up to 6000'/(1665) for all SID.
- If unable to comply with published restrictions, advise Domodedovo-Delivery.
- There are close-in obstacles located to the left of take-off heading at DIST 140m from DER RWY 14C with MAX ELEV 567'/173m.



TRANSITION ALT: 10000'  
 TRANSITION HGT: (2885)'

BEARINGS AND TRACKS ARE MAGNETIC  
 ALTITUDES IN FEET  
 HEIGHTS IN METRES  
 ELEVATIONS IN FEET AND METRES  
 DISTANCES IN KILOMETRES

Alt set: -QNH(QFE on req);  
 -hPa(mm on req).

