

CHANGE: New chart

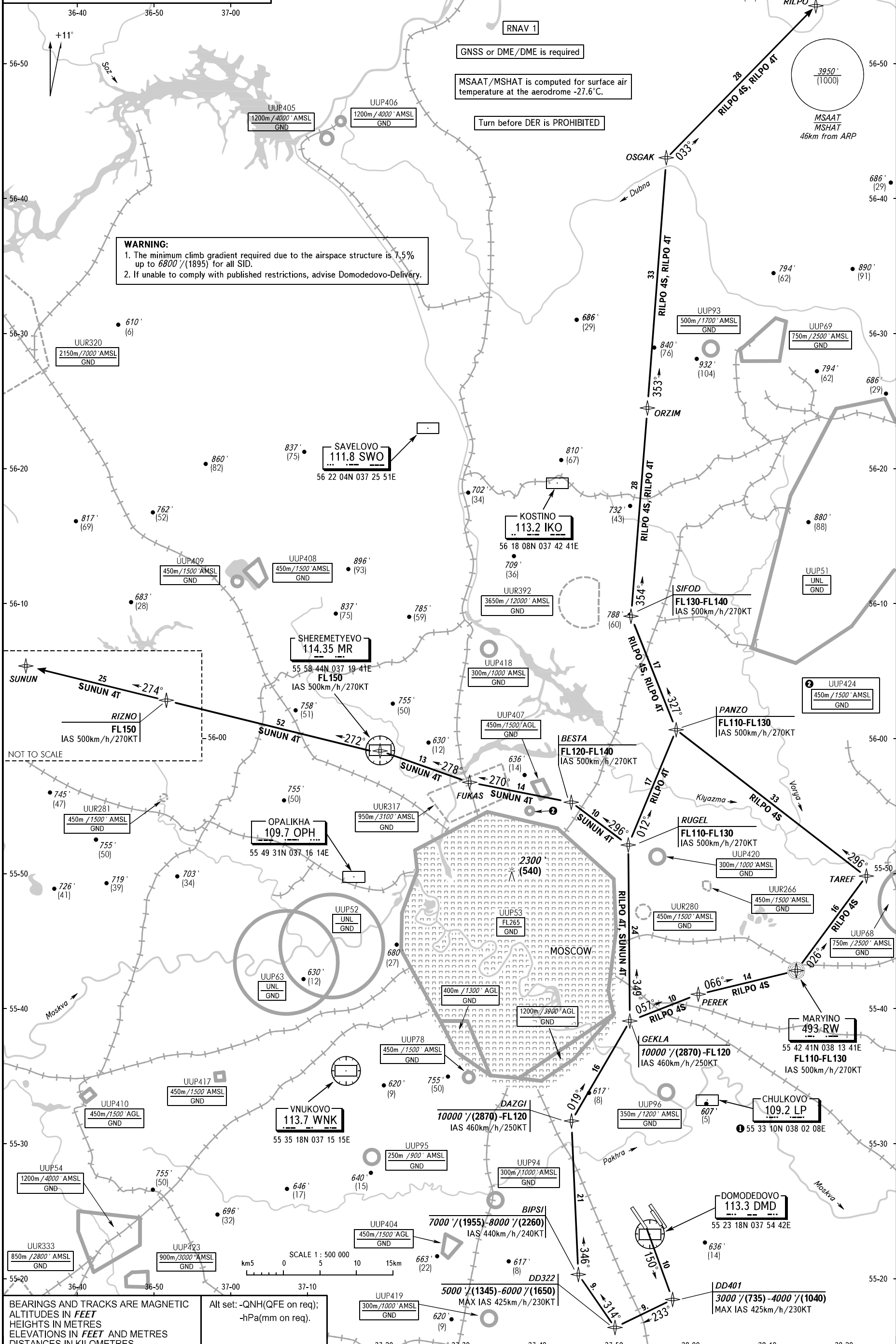
DOMODEDOVO TOWER	118.600	119.700
DOMODEDOVO RADAR	125.300	119.400 129.800
VNUKOVO RADAR	123.400	135.900
SHEREMETYEVO RADAR	118.100	122.700
MOSCOW APPROACH	See AD 2.1 UDD-55	

PZ - 90.11 coordinates  
 PZ - 90.02 coordinates

# RILPO 4S, RILPO 4T, SUNUN 4T

STANDARD DEPARTURE CHART  
 INSTRUMENT (SID) - ICAO

TRANSITION ALT.: 10000'  
 TRANSITION HGT.: (2870)



**WARNING:**  
 1. The minimum climb gradient required due to the airspace structure is 7.5% up to 6800'/(1895) for all SID.  
 2. If unable to comply with published restrictions, advise Domodedovo-Delivery.

RNAV 1  
 GNSS or DME/DME is required  
 MSAAT/MSHAT is computed for surface air temperature at the aerodrome -27.6°C.  
 Turn before DER is PROHIBITED

NOT TO SCALE

BEARINGS AND TRACKS ARE MAGNETIC  
 ALTITUDES IN FEET  
 HEIGHTS IN METRES  
 ELEVATIONS IN FEET AND METRES  
 DISTANCES IN KILOMETRES

Alt set: -QNH(QFE on req);  
 -hPa(mm on req).

MOSCOW, RUSSIA  
 DOMODEDOVO  
 RNAV RMY 14R

AD 2.1 UDD-143  
 01 DEC 22

Federal Air Transport Agency

ARAC AMDT 12/22