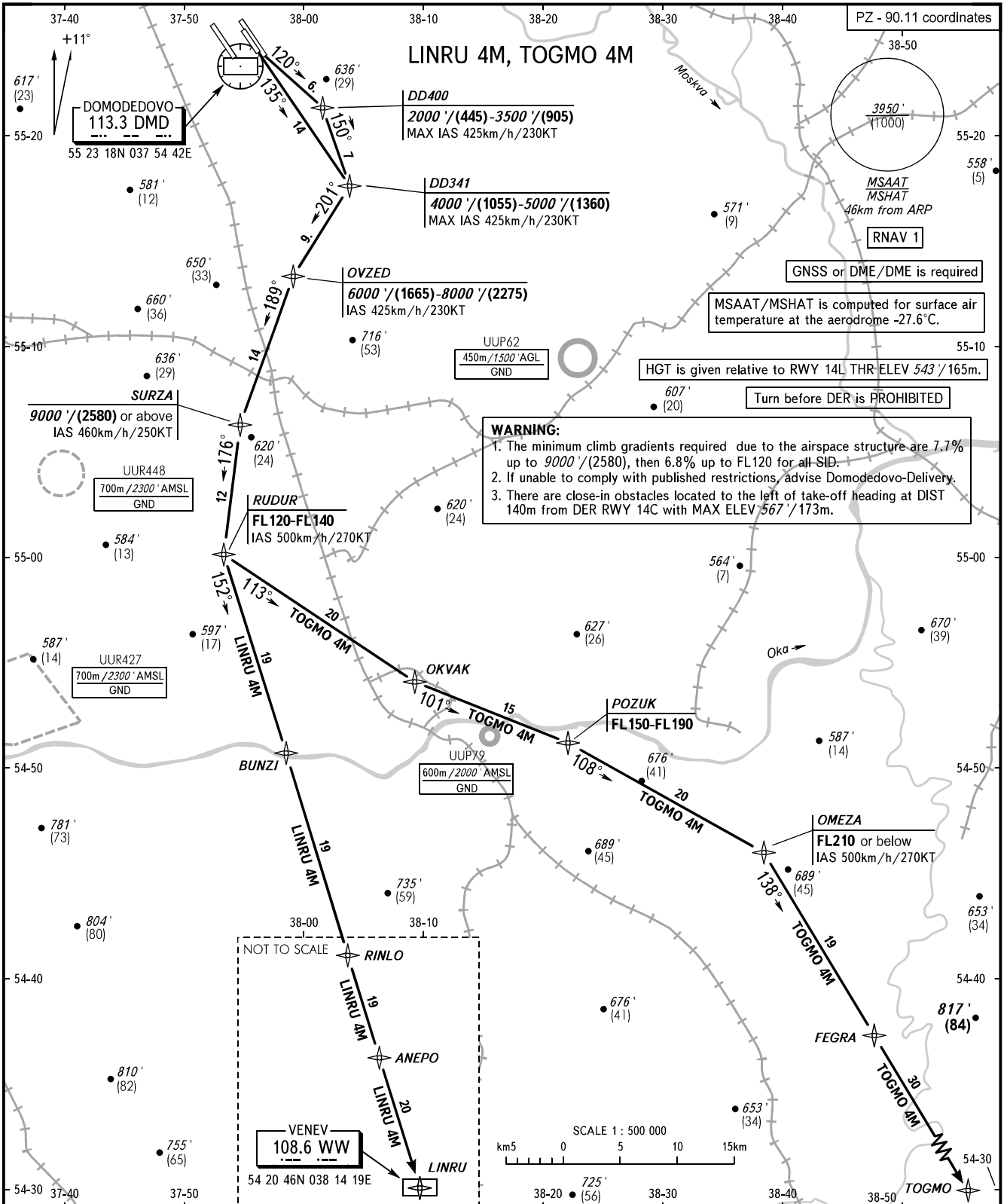


STANDARD DEPARTURE CHART
INSTRUMENT (SID) - ICAO

TRANSITION ALT: 10000'
TRANSITION HGT: (2885)

MOSCOW, RUSSIA
DOMODEDOVO
RNAV RWY 14L, 14C



WARNING:

1. The minimum climb gradients required due to the airspace structure are 7.7% up to 9000'/(2580), then 6.8% up to FL120 for all SID.
2. If unable to comply with published restrictions, advise Domodedovo-Delivery.
3. There are close-in obstacles located to the left of take-off heading at DIST 140m from DER RWY 14C with MAX ELEV 567'/173m.

DOMODEDOVO TOWER	118.600	119.700
DOMODEDOVO RADAR	125.300	119.400 129.800
VNUKOVO RADAR	123.400	135.900
SHEREMETYEVO RADAR	118.100	122.700
MOSCOW APPROACH	See AD 2.1 UDD-55	

BEARINGS AND TRACKS ARE MAGNETIC	Alt set: -QNH(QFE on req);
ALTITUDES IN FEET	-hPa(mm on req).
HEIGHTS IN METRES	
ELEVATIONS IN FEET AND METRES	
DISTANCES IN KILOMETRES	

CHANGE: New chart