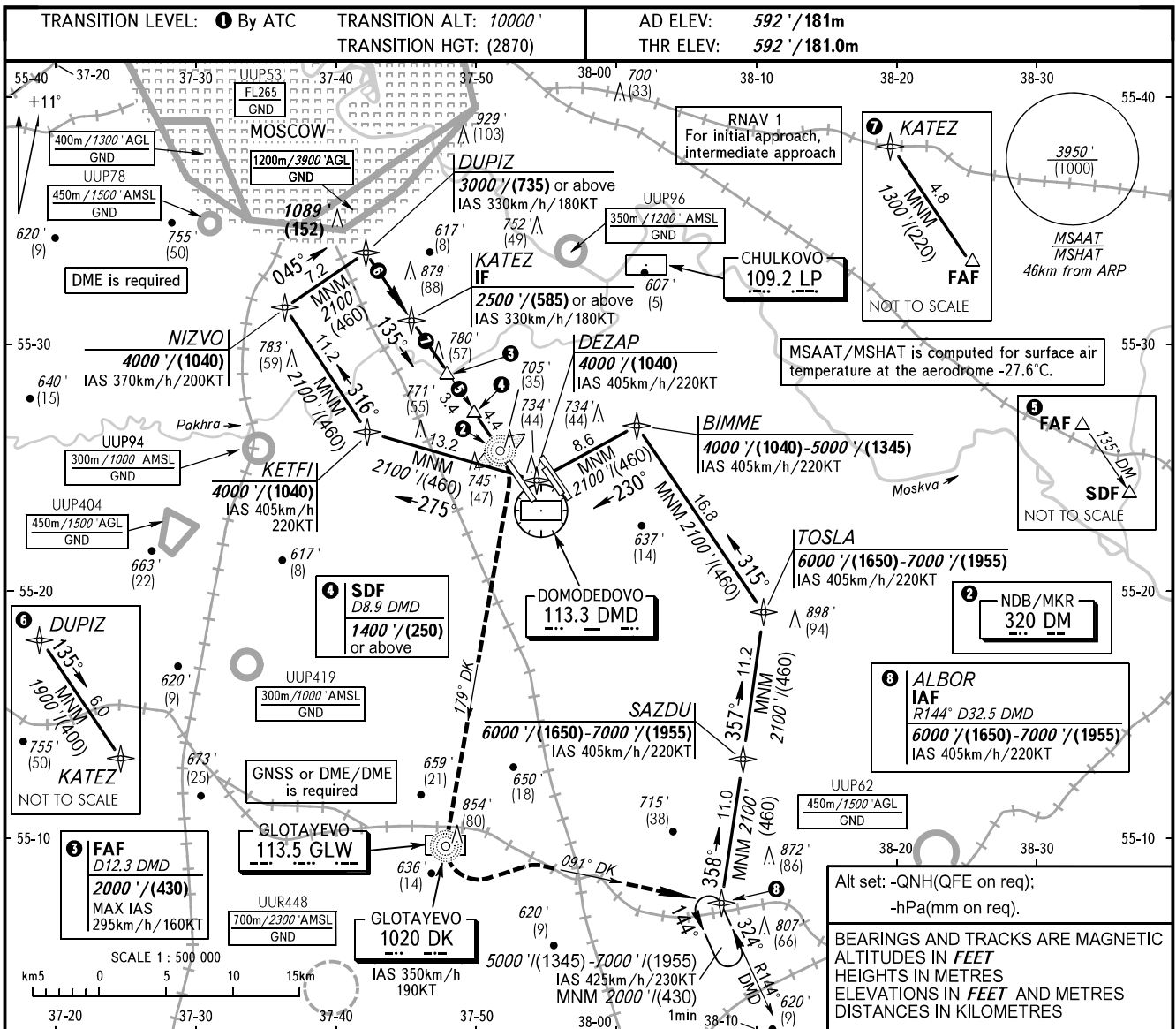


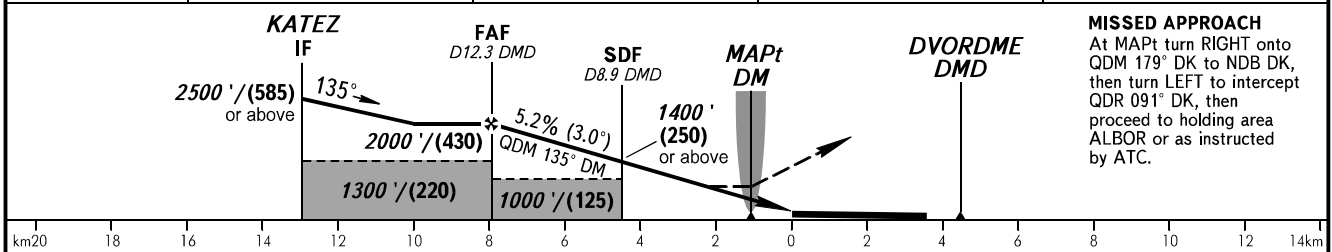
**INSTRUMENT  
APPROACH  
CHART - ICAO**

**MOSCOW, RUSSIA  
DOMODEDOVO  
NDB Z RWY 14R**

RADAR	125.300	129.800	127.700
	134.675	132.050	
TOWER 14R/32L	118.600		
14L/32R	119.700		



DME DMD	12.0	10.0	8.0	6.0
ALTITUDE/HEIGHT	1950' / (414)	1610' / (311)	1270' / (207)	925' / (102)



OCA(H)	A				B				C				D			
	990' (400') (122)				990' (400') (122)				990' (400') (122)				990' (400') (122)			
Straight-in Approach																
GROUND SPEED	km/h				150	180	210	240	270	300	330	360	390	420	450	
RATE OF DESCENT	m/s				2.2	2.6	3.0	3.5	3.9	4.3	4.8	5.2	5.6	6.1	6.5	
	ft/min				427	512	597	683	768	853	939	1024	1109	1195	1280	

**1** TRANSITION LEVEL:  
 - FL110 when QNH is 1013 hPa (760mm mercury column) or above;  
 - FL120 when QNH is 977 hPa (733mm mercury column) or above, but less than 1013 hPa (760mm mercury column);  
 - FL130 when QNH is less than 977 hPa (733mm mercury column).

CHANGE: TOSLA-BIME