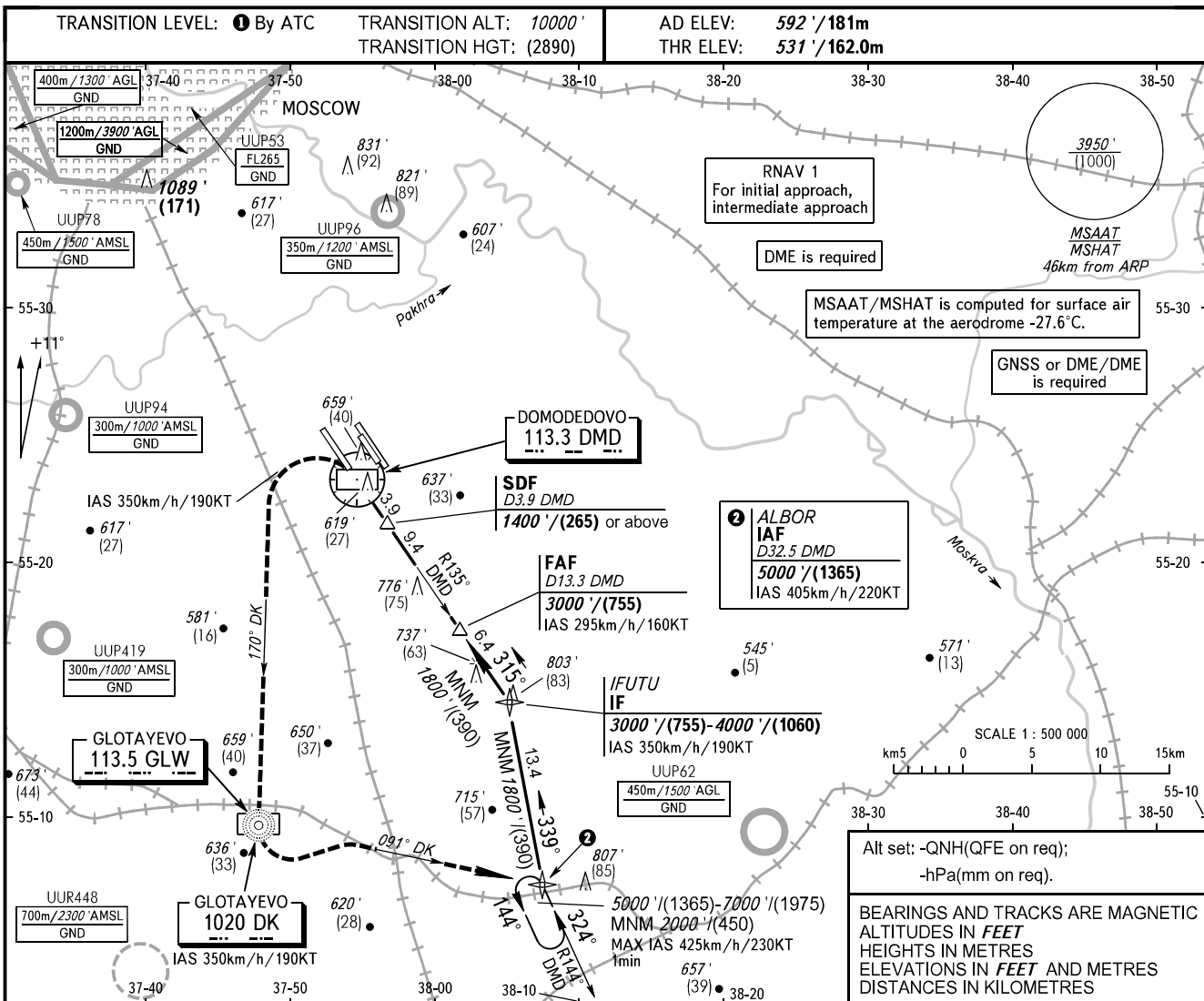


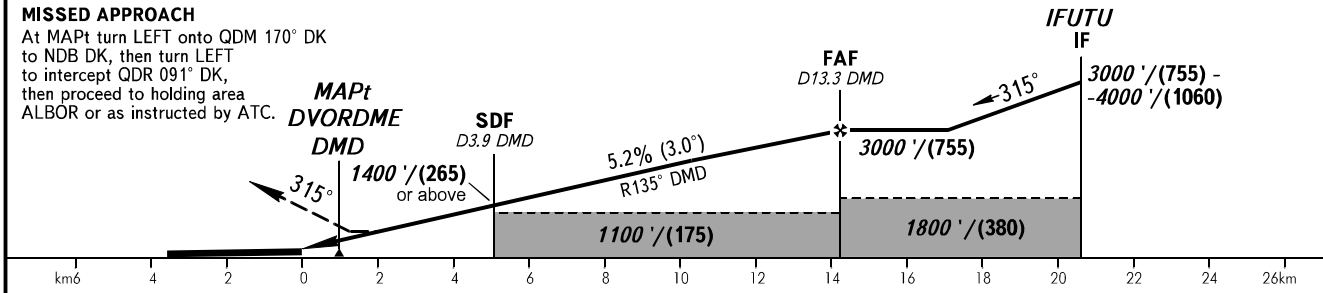
**INSTRUMENT  
APPROACH  
CHART - ICAO**

**MOSCOW, RUSSIA  
DOMODEDOVO  
DVOR RWY 32L**

RADAR	125.300	129.800	127.700
	134.675	132.050	
TOWER	14R/32L	118.600	
	14L/32R	119.700	



DIST to RWY 32L	2.0	4.0	6.0	8.0	10.0	12.0	13.8
ALTITUDE/HEIGHT	920'/(120)	1260'/(225)	1600'/(330)	1950'/(435)	2290'/(540)	2630'/(640)	3000'/(755)



OCA(H)		A	B	C	D								
Straight-in	With SDF	930' (400') (122)	930' (400') (122)	930' (400') (122)	930' (400') (122)								
	WO SDF	1030' (500') (153)	1030' (500') (153)	1030' (500') (153)	1030' (500') (153)								
GROUND SPEED		km/h	150	180	210	240	270	300	330	360	390	420	450
RATE OF DESCENT		m/s	2.2	2.6	3.0	3.5	3.9	4.3	4.8	5.2	5.6	6.1	6.5
		ft/min	427	512	597	683	768	853	939	1024	1109	1195	1280

**① TRANSITION LEVEL:**

- FL110 when QNH is 1013 hPa (760mm mercury column) or above;
- FL120 when QNH is 977 hPa (733mm mercury column) or above, but less than 1013 hPa (760mm mercury column);
- FL130 when QNH is less than 977 hPa (733mm mercury column).

CHANGE: ALT/HGT table