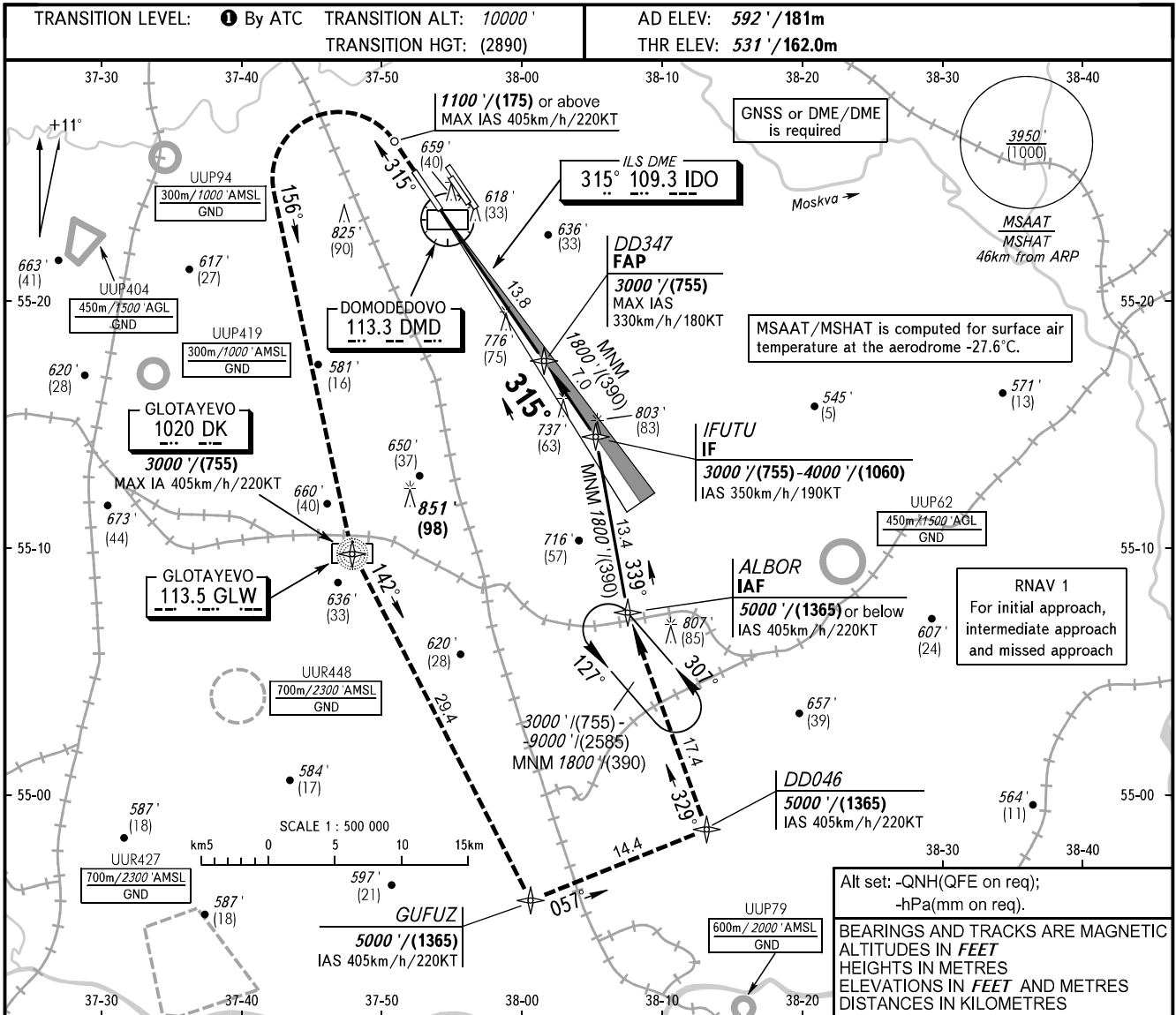


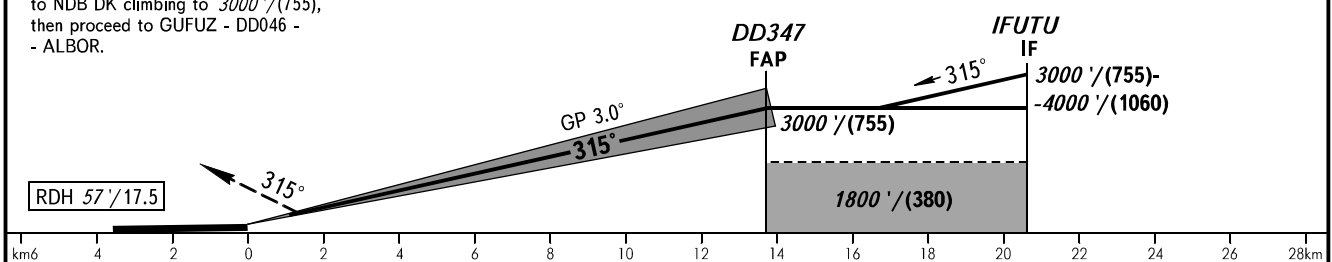
**INSTRUMENT  
APPROACH  
CHART - ICAO**

RADAR	125.300	127.700
	129.800	132.050
TOWER 14R/32L	134.675	
14L/32R	118.600	119.700

**MOSCOW, RUSSIA**  
DOMODEDOVO  
ILS CAT I RWY 32L



<b>MISSED APPROACH</b> Climb on track 315° to 1100'/(175) or above, turn LEFT onto track 156° to NDB DK climbing to 3000'/(755), then proceed to GUFUZ - DD046 - ALBOR.	DIST to RWY 32L	2.0	4.0	6.0	8.0	10.0	12.0	13.8
	ALTITUDE/HEIGHT	920'/(120)	1260'/(225)	1600'/(330)	1950'/(435)	2290'/(540)	2630'/(640)	3000'/(755)



OCA(H)	A	B	C	D	<b>① TRANSITION LEVEL:</b> - FL110 when QNH is 1013 hPa (760mm mercury column) or above; - FL120 when QNH is 977 hPa (733mm mercury column) or above, but less than 1013 hPa (760mm mercury column); - FL130 when QNH is less than 977 hPa (733mm mercury column).							
	Straight-in Approach	CAT I 731'/(200') (60)	731'/(200') (60)	731'/(200') (60)		731'/(200') (60)						
Circling												
GROUND SPEED	km/h	150	180	210	240	270	300	330	360	390	420	450
RATE OF DESCENT	m/s	2.2	2.6	3.0	3.5	3.9	4.3	4.8	5.2	5.6	6.1	6.5
	ft/min	427	512	597	683	768	853	939	1024	1109	1195	1280

CHANGE: ALT /HGT table, DISTANCES