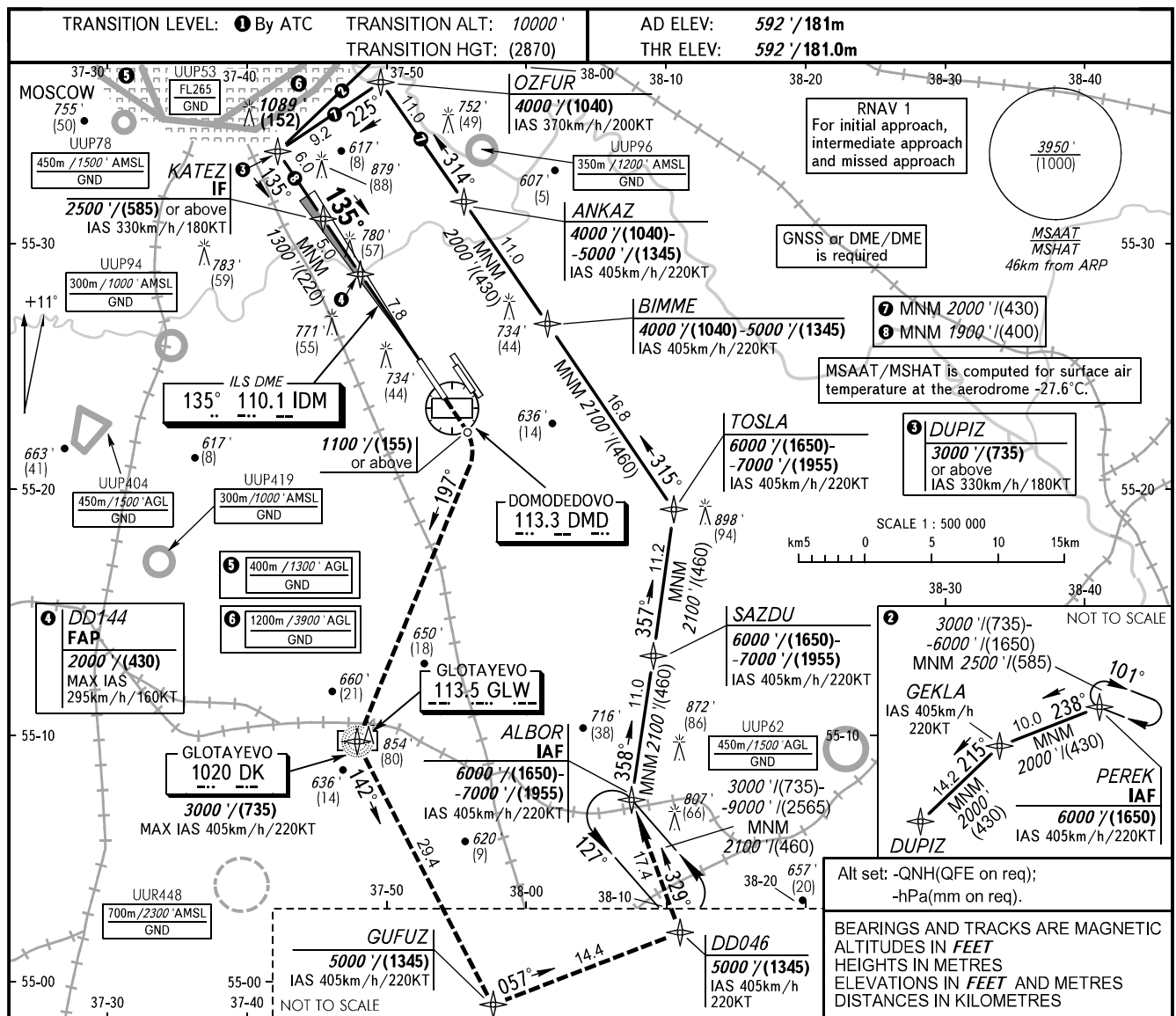


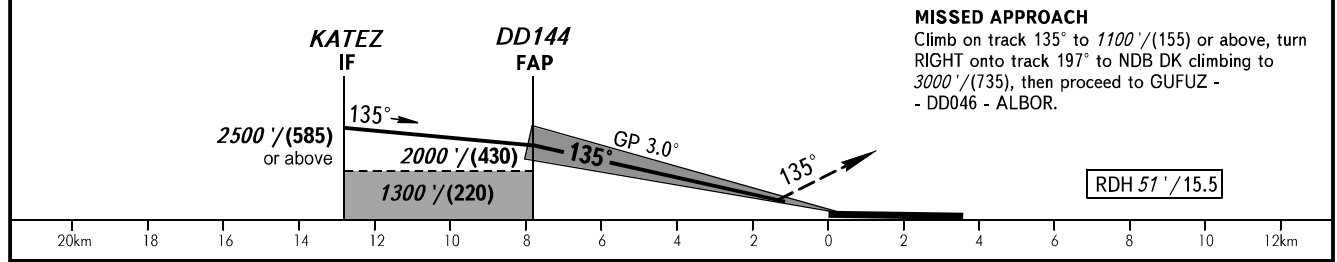
**INSTRUMENT
APPROACH
CHART - ICAO**

RADAR	125.300	129.800	127.700
TOWER	14R/32L	118.600	14L/32R
		134.675	132.050
		119.700	

**MOSCOW, RUSSIA
DOMODEDOVO
ILS Y CAT I/II/IIIA RWY 14R**



DIST TO RWY 14R	7.8	6.0	4.0	2.0
ALTITUDE/HEIGHT	2000' / (430)	1670' / (329)	1330' / (225)	980' / (119)



OCA(H)		A	B	C	D	① TRANSITION LEVEL:														
Straight-in Approach	CAT I	792' (200') (60)	792' (200') (60)	792' (200') (60)	792' (200') (60)	- FL110 when QNH is 1013 hPa (760mm mercury column) or above;														
	CAT II	(100') / (30)	(100') / (30)	(100') / (30)	(100') / (30)	- FL120 when QNH is 977 hPa (733mm mercury column) or above,														
	CAT IIIA	(100') / (30)	(100') / (30)	(100') / (30)	(100') / (30)	but less than 1013 hPa (760mm mercury column); - FL130 when QNH is less than 977 hPa (733mm mercury column).														
GROUND SPEED		km/h	150	180	210	240	270	300	330	360	390	420	450							
RATE OF DESCENT		m/s	2.2	2.6	3.0	3.5	3.9	4.3	4.8	5.2	5.6	6.1	6.5							
		ft/min	427	512	597	683	768	853	939	1024	1109	1195	1280							

CHANGE: ALT/HGT table, DISTANCES