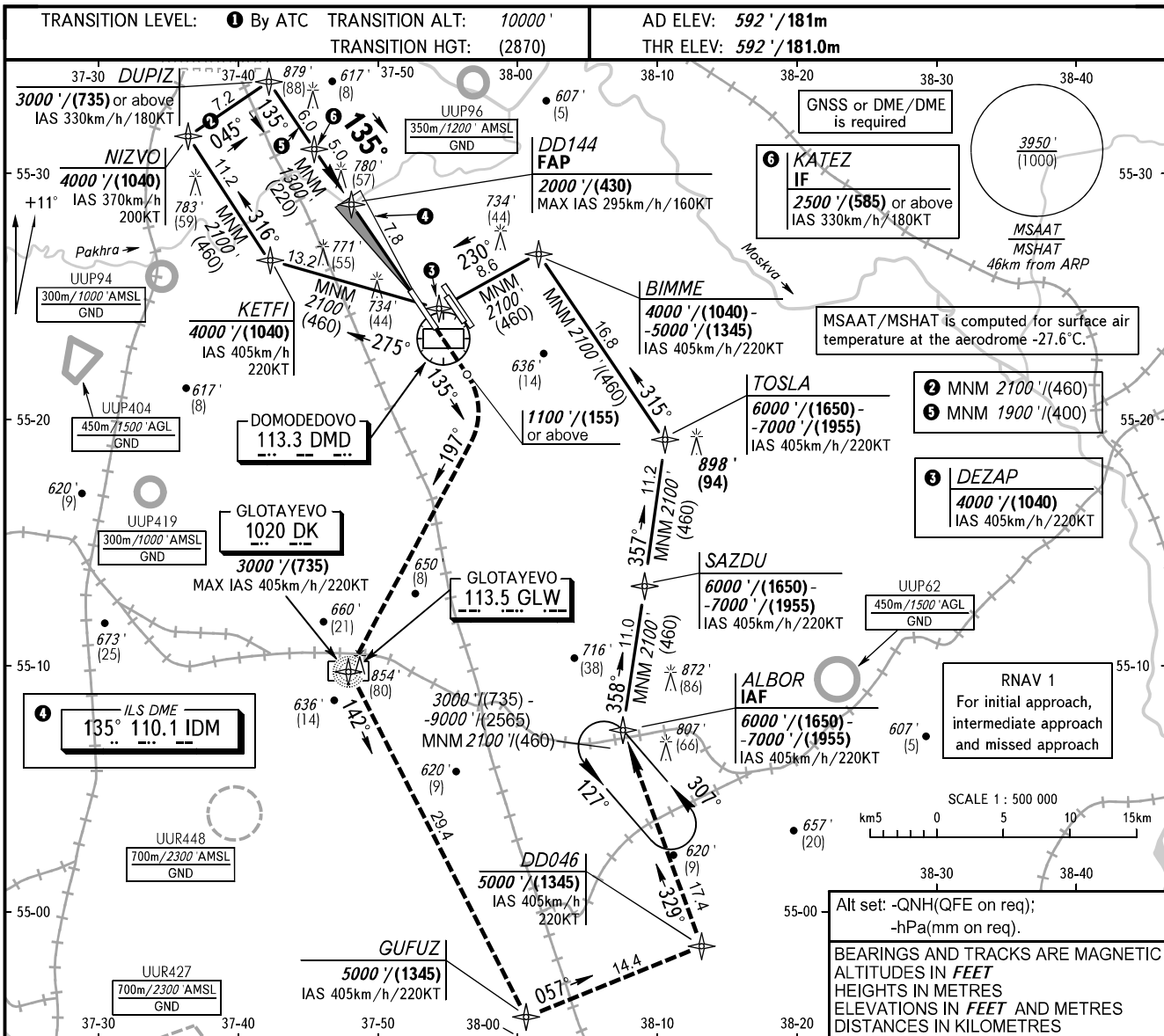


**INSTRUMENT
APPROACH
CHART - ICAO**

| | | |
|---------------|---------|---------|
| RADAR | 125.300 | 127.700 |
| | 129.800 | 132.050 |
| TOWER 14R/32L | 134.675 | |
| 14L/32R | 118.600 | 119.700 |

MOSCOW, RUSSIA
DOMODEDOVO
ILS Z CAT I/II/IIIA RWY 14R

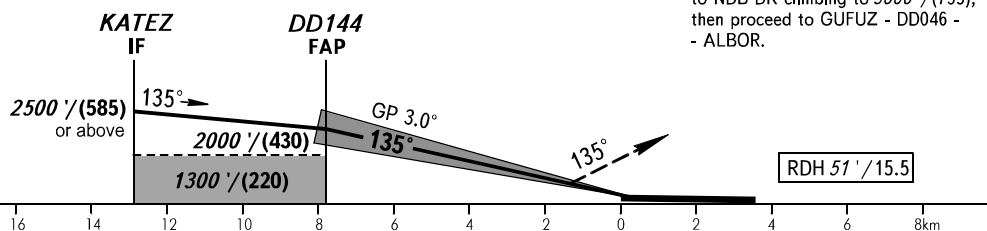


| | | | | |
|-----------------|-------------|-------------|-------------|------------|
| DIST to RWY 14R | 7.8 | 6.0 | 4.0 | 2.0 |
| ALTITUDE/HEIGHT | 2000'/(430) | 1670'/(329) | 1330'/(225) | 980'/(119) |

Alt set: -QNH(QFE on req);
-hPa(mm on req).

BEARINGS AND TRACKS ARE MAGNETIC
ALTITUDES IN FEET
HEIGHTS IN METRES
ELEVATIONS IN FEET AND METRES
DISTANCES IN KILOMETRES

MISSED APPROACH
Climb on track 135° to 1100'/(155) or above, turn RIGHT onto track 197° to NDB DK climbing to 3000'/(735), then proceed to GUFUZ - DD046 - ALBOR.



| | | | | | | | | | | | | | |
|----------------------|--------------|------------------|------------------|------------------|------------------|-----|-----|-----|-----|------|------|------|------|
| Straight-in Approach | OCA(H) | A | B | C | D | | | | | | | | |
| | CAT I | 792' (200') (60) | 792' (200') (60) | 792' (200') (60) | 792' (200') (60) | | | | | | | | |
| | CAT II | (100')/(30) | (100')/(30) | (100')/(30) | (100')/(30) | | | | | | | | |
| Approach | CAT IIIA | (100')/(30) | (100')/(30) | (100')/(30) | (100')/(30) | | | | | | | | |
| | GROUND SPEED | km/h | 150 | 180 | 210 | 240 | 270 | 300 | 330 | 360 | 390 | 420 | 450 |
| RATE OF DESCENT | m/s | | 2.2 | 2.6 | 3.0 | 3.5 | 3.9 | 4.3 | 4.8 | 5.2 | 5.6 | 6.1 | 6.5 |
| | ft/min | | 427 | 512 | 597 | 683 | 768 | 853 | 939 | 1024 | 1109 | 1195 | 1280 |

1 TRANSITION LEVEL:
- FL110 when QNH is 1013 hPa (760mm mercury column) or above;
- FL120 when QNH is 977 hPa (733mm mercury column) or above, but less than 1013 hPa (760mm mercury column);
- FL130 when QNH is less than 977 hPa (733mm mercury column).

CHANGE: ALT/HGT table, DISTANCES