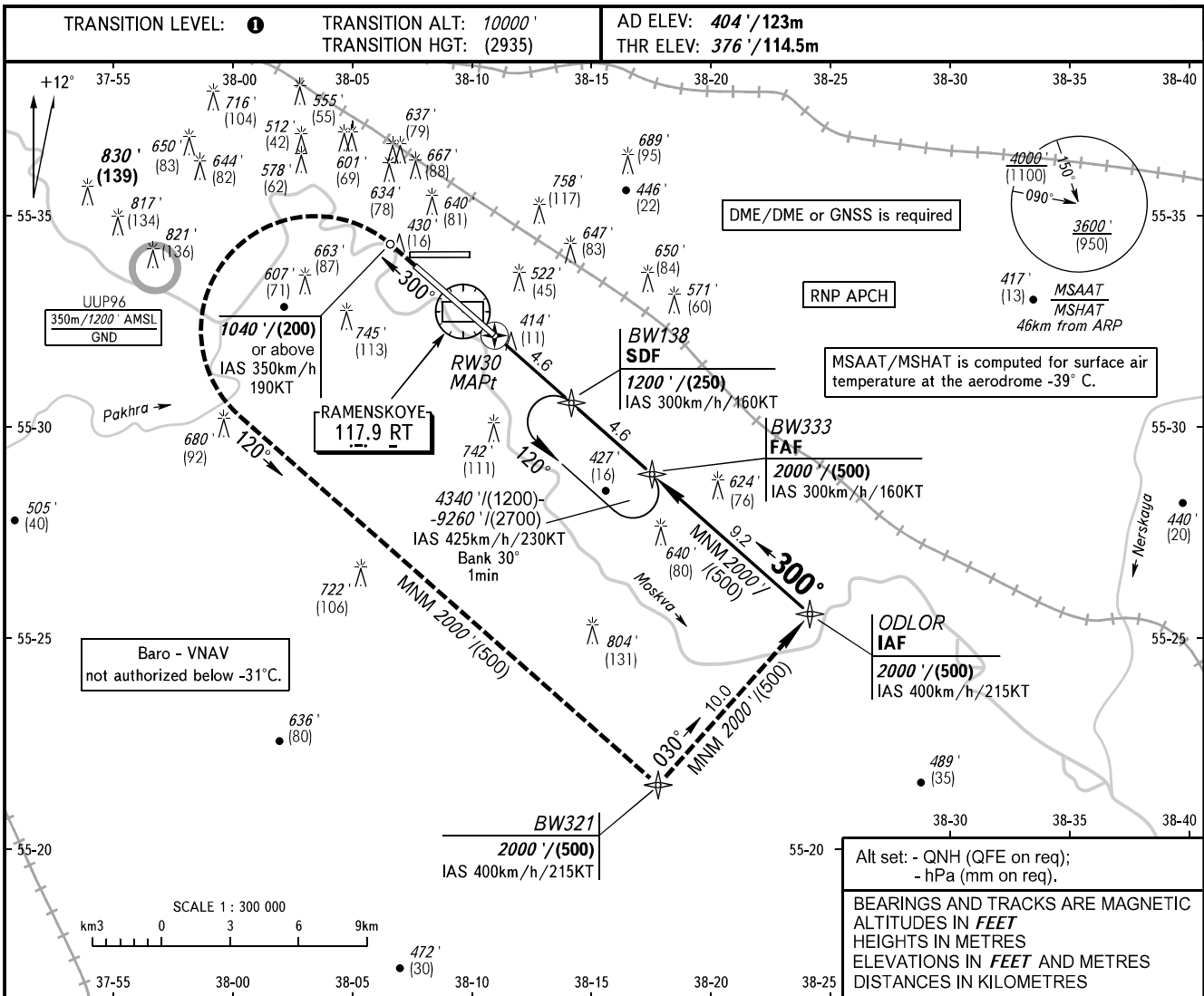


**INSTRUMENT
APPROACH
CHART - ICAO**

GORDY RADAR 125.250

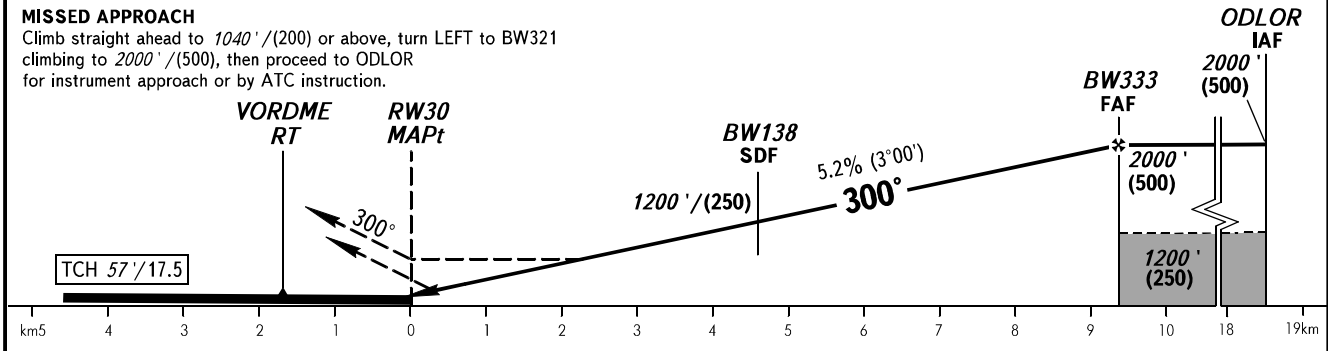
RAMENSKOYE, RUSSIA
RAMENSKOYE
RNP RWY 30



DIST to RW30	1.0	2.0	3.0	4.0	DIST to BW138	1.0	2.0	3.0	4.0
ALTITUDE/HEIGHT	610' / (70)	770' / (120)	950' / (175)	1120' / (225)	ALTITUDE/HEIGHT	1360' / (300)	1540' / (355)	1720' / (410)	1890' / (460)

MISSED APPROACH

Climb straight ahead to 1040' / (200) or above, turn LEFT to BW321 climbing to 2000' / (500), then proceed to ODLOR for instrument approach or by ATC instruction.



OCA(H)		A	B	C	D	HEL	1 TRANSITION LEVEL: - FL110 when QNH is 1013 hPa (760mm mercury column) or above; - FL120 when QNH is 977 hPa (733mm mercury column) or above, but less than 1013 hPa (760mm mercury column); - FL130 when QNH is less than 977 hPa (733mm mercury column).						
Straight-in Approach	LNAV	700' / (101)	700' / (101)	700' / (101)	700' / (101)	700' / (101)							
	LNAV/VNAV	610' / (72)	620' / (75)	630' / (78)	650' / (84)	610' / (72)							
Circling													
GROUND SPEED		km/h	150	180	210	240	270	300	330	360	390	420	450
FAF - MAPt 9240m		min:sec	3:42	3:05	2:38	2:19	2:03	1:51	1:41	1:32	1:25	1:19	1:14
RATE OF DESCENT		m/s	2.2	2.6	3.1	3.5	3.9	4.4	4.8	5.2	5.7	6.1	6.6
RATE OF DESCENT		ft/min	433	512	610	689	768	866	945	1024	1122	1201	1299