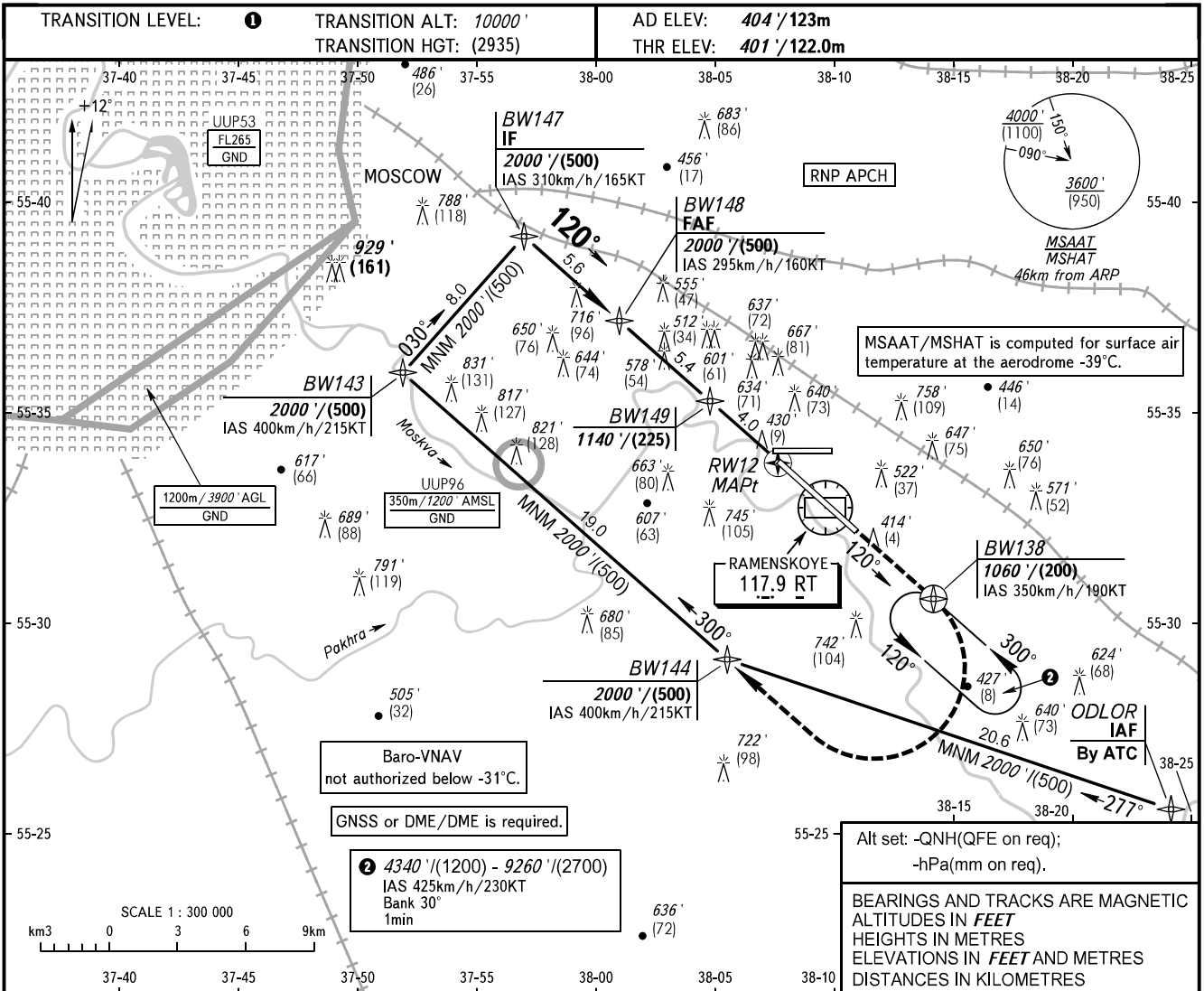


**INSTRUMENT
APPROACH
CHART - ICAO**

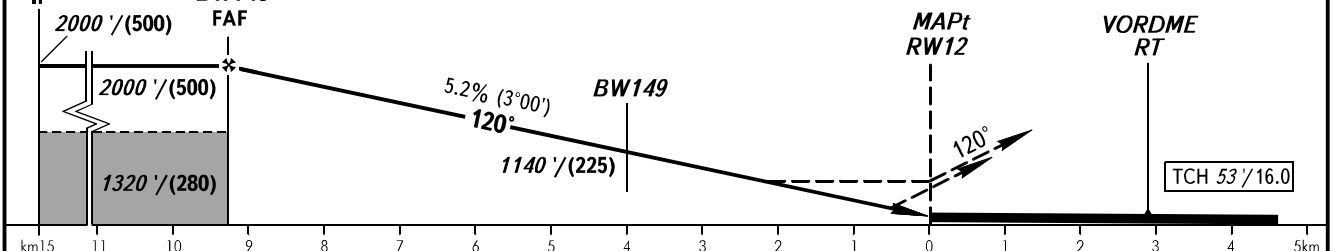
GORDY RADAR 125.250

**RAMENSKOYE, RUSSIA
RAMENSKOYE
RNP RWY 12**



DIST to BW149	5.4	4.0	3.0	2.0	1.0	DIST to RW12	3.0	2.0	1.0
ALTITUDE/HEIGHT	2000'/(500)	1830'/(435)	1670'/(385)	1490'/(330)	1320'/(280)	ALTITUDE/HEIGHT	980'/(175)	800'/(120)	630'/(70)

MISSED APPROACH
Climb straight ahead to 1060'/(200) to BW138, turn RIGHT to BW144 climbing to 2000'/(500), then according to chart, or by ATC instruction.



OCA(H)		A	B	C	D	HEL	① TRANSITION LEVEL:													
Straight-in Approach	LNAV	800'/(122)	800'/(122)	800'/(122)	800'/(122)	800'/(122)	- FL110 when QNH is 1013 hPa (760mm mercury column) or above;													
	LNAV/VNAV	678'/(84)	688'/(87)	698'/(91)	708'/(94)	678'/(84)	- FL120 when QNH is 977 hPa (733mm mercury column) or above, but less than 1013 hPa (760mm mercury column);													
Circling							- FL130 when QNH is less than 977 hPa (733mm mercury column).													
GROUND SPEED		km/h		150	180	210	240	270	300	330	360	390	420	450						
FAF - MAPt 9310m		min:sec		3:43	3:06	2:40	2:20	2:04	1:52	1:42	1:33	1:26	1:20	1:14						
RATE OF DESCENT		m/s		2.2	2.6	3.1	3.5	3.9	4.4	4.8	5.2	5.7	6.1	6.6						
RATE OF DESCENT		ft/min		433	512	610	689	768	866	945	1024	1122	1201	1299						

CHANGE: New chart