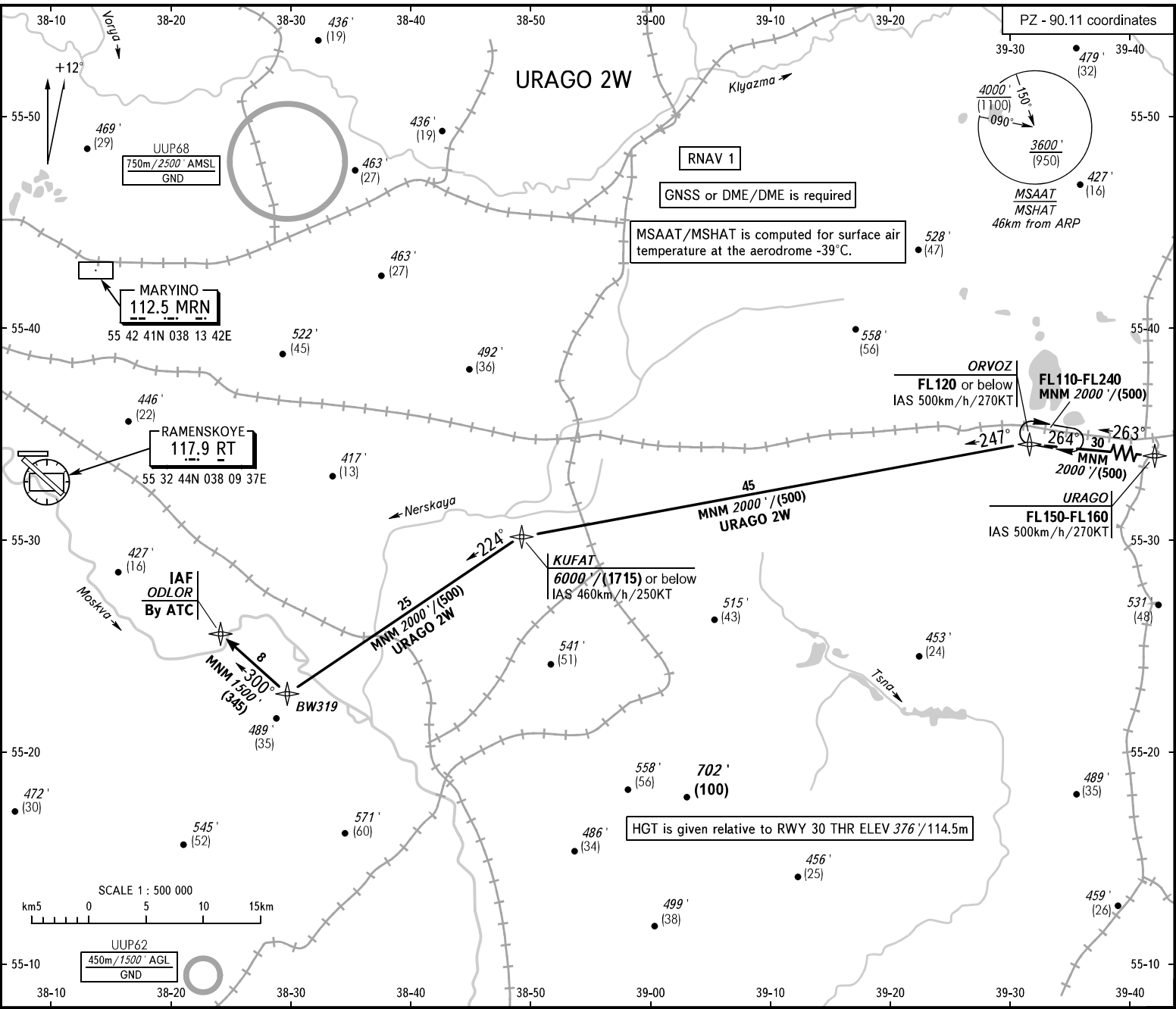


STANDARD ARRIVAL CHART
INSTRUMENT (STAR) - ICAO

RAMENSKOYE, RUSSIA
RAMENSKOYE
RNAV RWY 12/30

TRANSITION
LEVEL: **By ATC**



GORDY APPROACH	125.250
GORDY RADAR	125.250
DOMEDOVOVO RADAR	125.300 129.800 134.675
MOSCOW APPROACH	127.700 132.050
	127.200 128.000 131.200 134.000

BEARINGS AND TRACKS ARE MAGNETIC
ALTITUDES IN FEET
HEIGHTS IN METRES
ELEVATIONS IN FEET AND METRES
DISTANCES IN KILOMETRES

Alt set: -QNH(QFE on req);
-hPa(mm on req).

TRANSITION LEVEL:

- FL110 when QNH is 1013 hPa (760mm mercury column) or above;
- FL120 when QNH is 977 hPa (733mm mercury column) or above, but less than 1013 hPa (760mm mercury column);
- FL130 when QNH is less than 977 hPa (733mm mercury column).