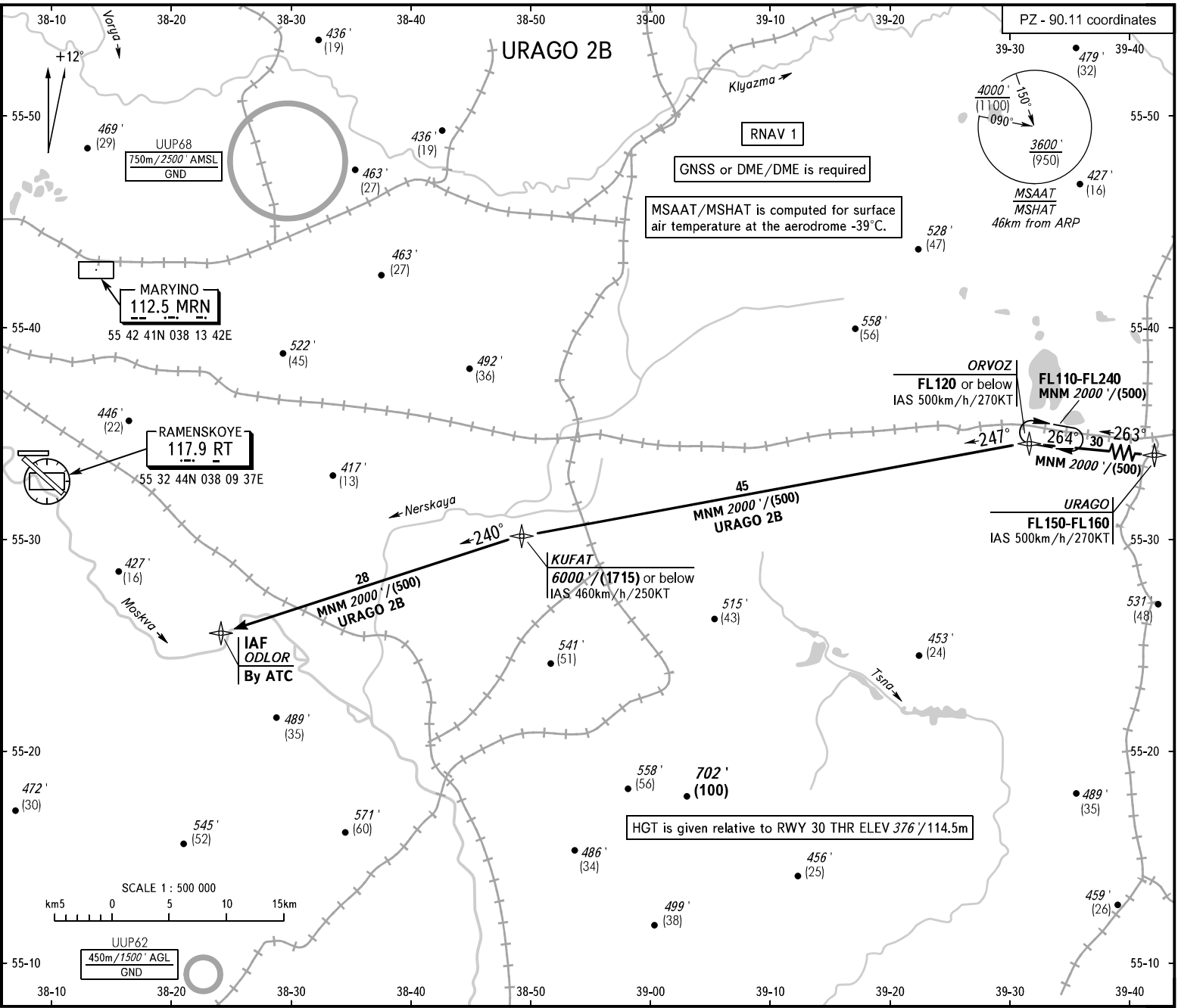


STANDARD ARRIVAL CHART
INSTRUMENT (STAR) - ICAO

TRANSITION
LEVEL: **By ATC**

RAMENSKOYE, RUSSIA
RAMENSKOYE
RNAV RWY 12/30



TRANSITION LEVEL:

- FL 110 when QNH is 1013 hPa (760mm mercury column) or above;
- FL 120 when QNH is 977 hPa (733mm mercury column) or above, but less than 1013 hPa (760mm mercury column);
- FL 130 when QNH is less than 977 hPa (733mm mercury column).

GORDY APPROACH
125.250
GORDY RADAR 125.250

DOMODOVOVO RADAR
125.300 129.800 134.675
127.700 132.050

MOSCOW APPROACH
127.200 128.000 131.200 134.000

BEARINGS AND TRACKS ARE MAGNETIC
ALTITUDES IN FEET
HEIGHTS IN METRES
ELEVATIONS IN FEET AND METRES
DISTANCES IN KILOMETRES

Alt set: -QNH(QFE on req.);
-hPa(mm on req.).