

STANDARD ARRIVAL CHART  
INSTRUMENT (STAR) - ICAO

TRANSITION  
LEVEL: By ATC

RAMENSKOYE, RUSSIA  
RAMENSKOYE  
RNAV Rwy 12/30

GORDY APPROACH	125.250
GORDY RADAR	125.250
DOMODEDOVO RADAR	125.300 129.800 134.675
MOSCOW APPROACH	127.700 132.050
	127.200 128.000 131.200 134.000

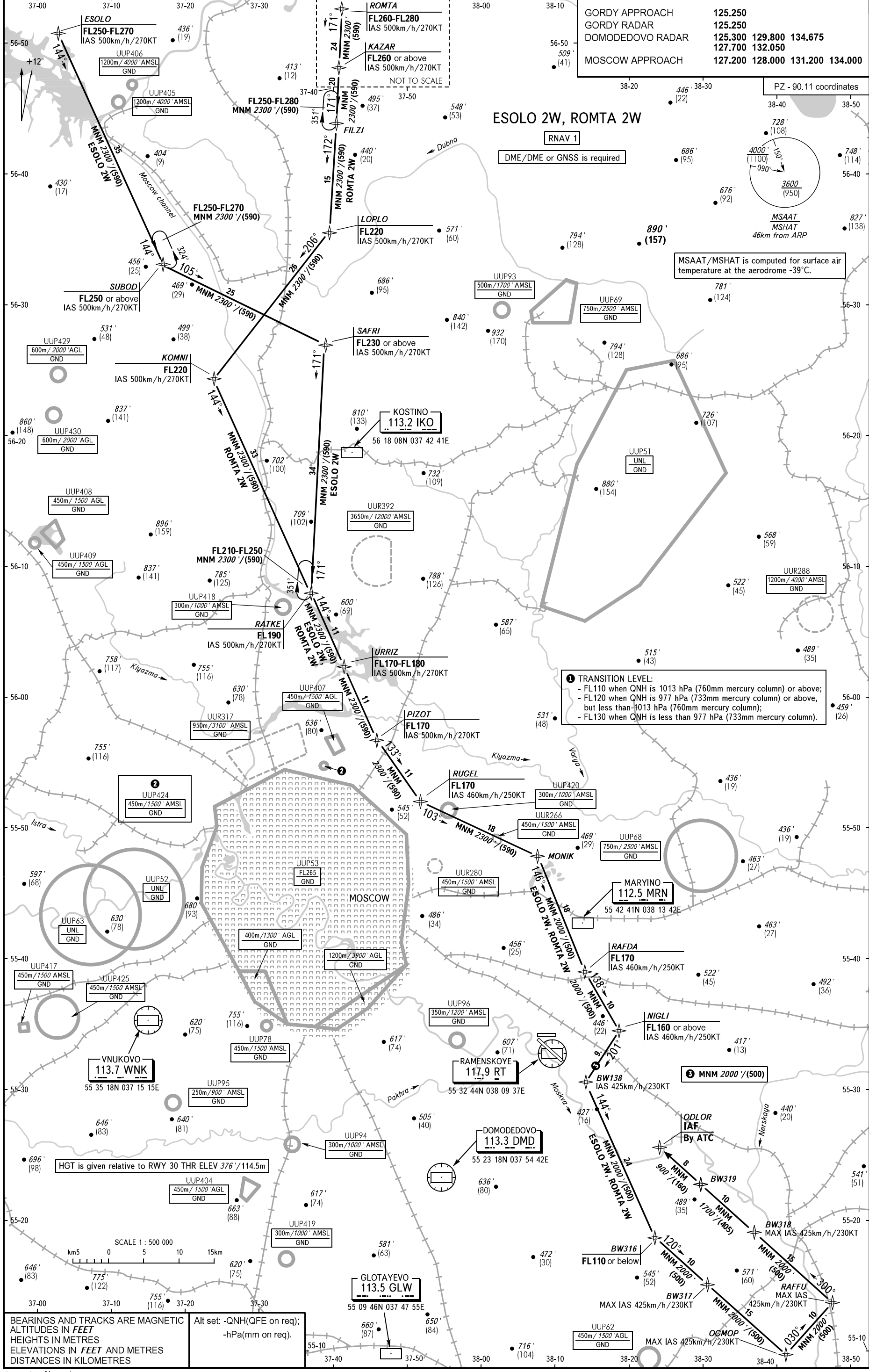
ESOLO 2W, ROMTA 2W

RNAV 1  
DME/DME or GNSS is required

MSAAT/MSHAT is computed for surface air temperature at the aerodrome -39°C.

**1** TRANSITION LEVEL:

- FL110 when QNH is 1013 hPa (760mm mercury column) or above;
- FL120 when QNH is 977 hPa (733mm mercury column) or above, but less than 1013 hPa (760mm mercury column);
- FL130 when QNH is less than 977 hPa (733mm mercury column).



BEARINGS AND TRACKS ARE MAGNETIC  
ALTITUDES IN FEET  
HEIGHTS IN METRES  
ELEVATIONS IN FEET AND METRES  
DISTANCES IN KILOMETRES

Alt set: -QNH(QFE on req);  
-hPa(mm on req).

CHANGE: New chart